

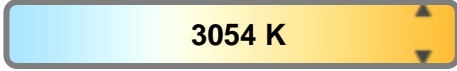
Light efficiency:



Light quality:



Color temperature:



Output: 806 lm

Peak: 1850 cd

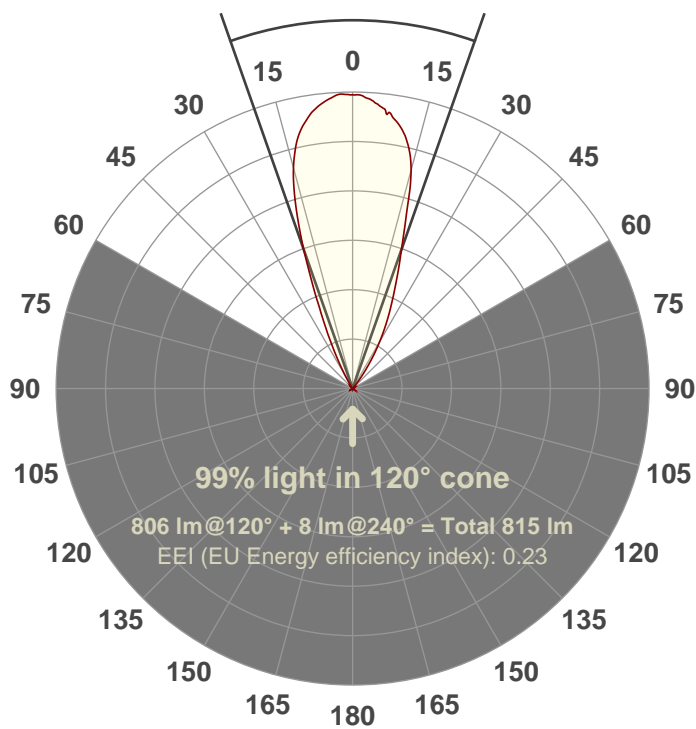
Power: 14.9 W

PF: 0.97



Beam angle

38.7°



Test number:

GR-XT12-3K-FL-RD

Luminaire Model:

Date and time:

3/21/2017 12:16:32 PM

Description:

**40°
500mA**

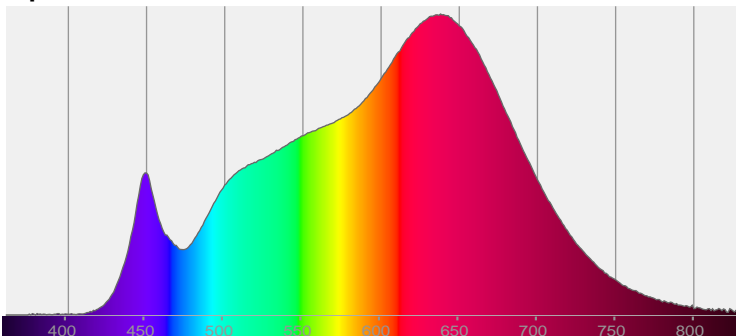
LUM: 806

PPF: 15.8

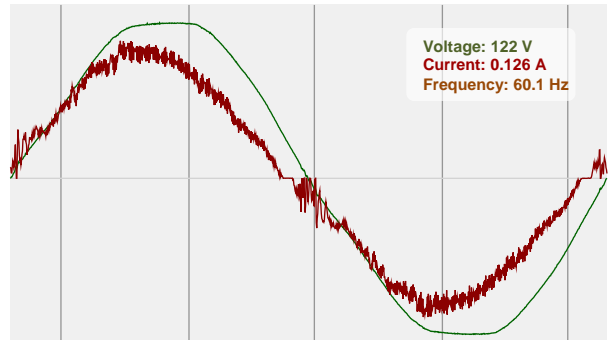


CIE 1931
x: 0.432
y: 0.401

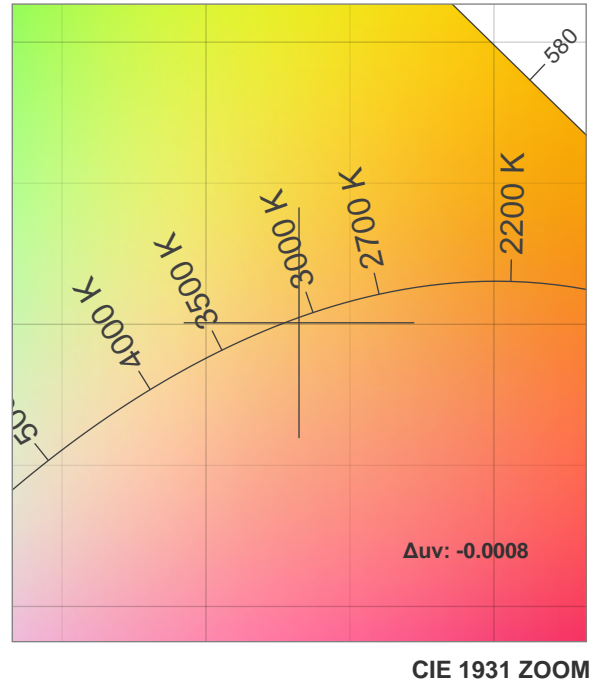
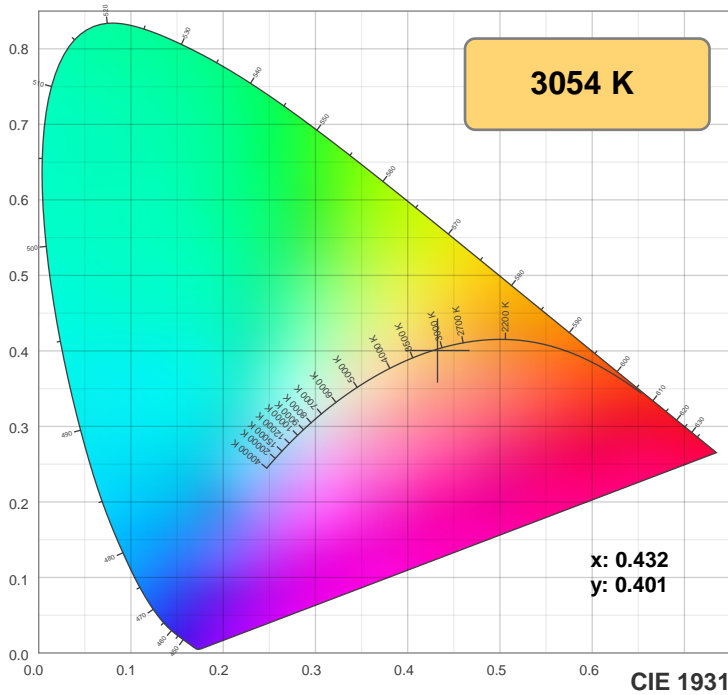
Spectra



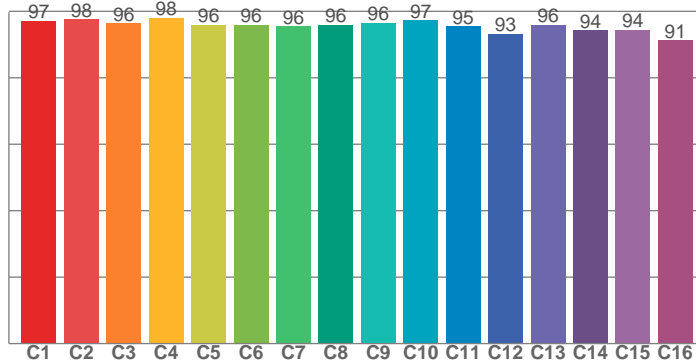
Power



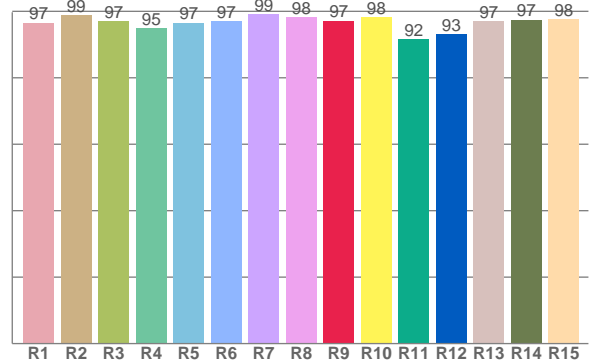
Color details



TM30: 96.0



CRI: 97.2 (R1-R8)



CRI R values, only R1-R8 are used to calculate final CRI value

R1	R2	R3	R4	R5	R6	R7	R8	R9	R10	R11	R12	R13	R14	R15
96.6	98.9	97.0	94.8	96.6	97.0	99.0	98.2	97.2	98.3	91.5	93.0	96.9	97.5	97.6

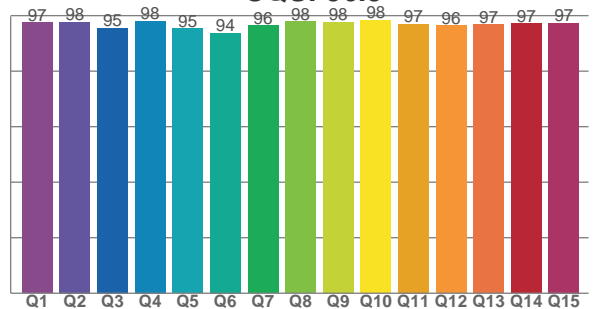
TM30 C values, 16 binned values out of total of 99 C values

C1	C2	C3	C4	C5	C6	C7	C8	C9	C10	C11	C12	C13	C14	C15	C16
97.1	97.5	96.4	98.0	95.9	96.0	95.5	95.9	96.4	97.3	95.4	93.3	96.0	94.2	94.5	91.2

CQS Q values

Q1	Q2	Q3	Q4	Q5	Q6	Q7	Q8	Q9	Q10	Q11	Q12	Q13	Q14	Q15
97.5	97.6	95.5	98.0	95.4	93.8	96.4	97.9	97.7	98.3	96.9	96.4	96.8	97.1	97.4

CQS: 96.5



Color parameters

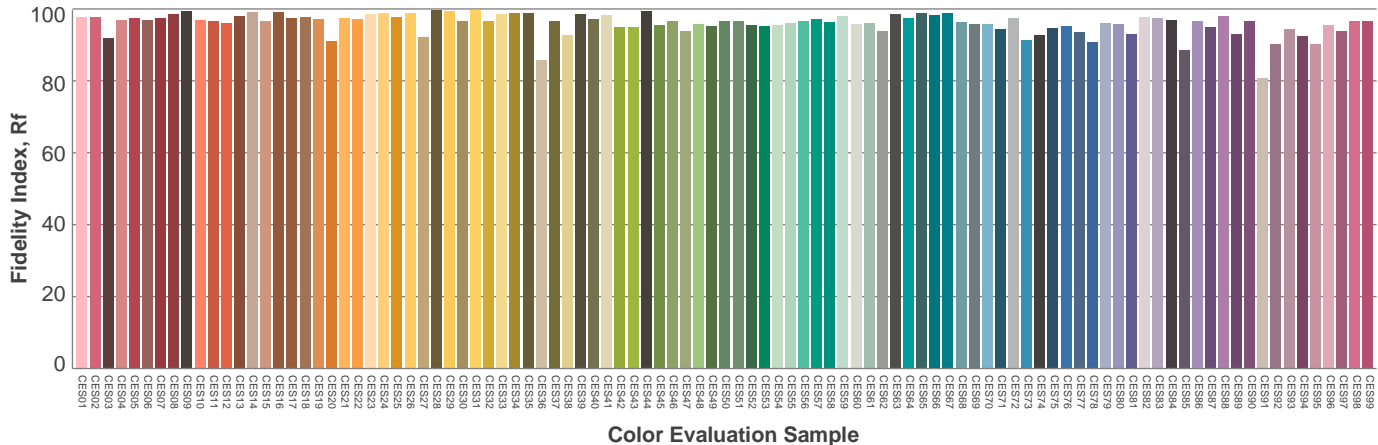
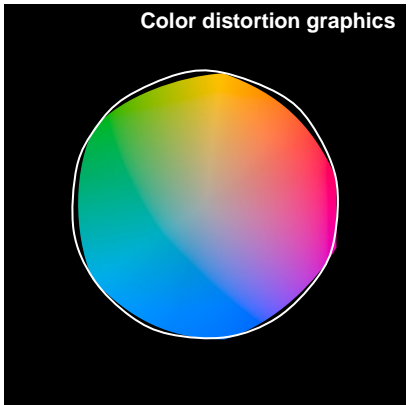
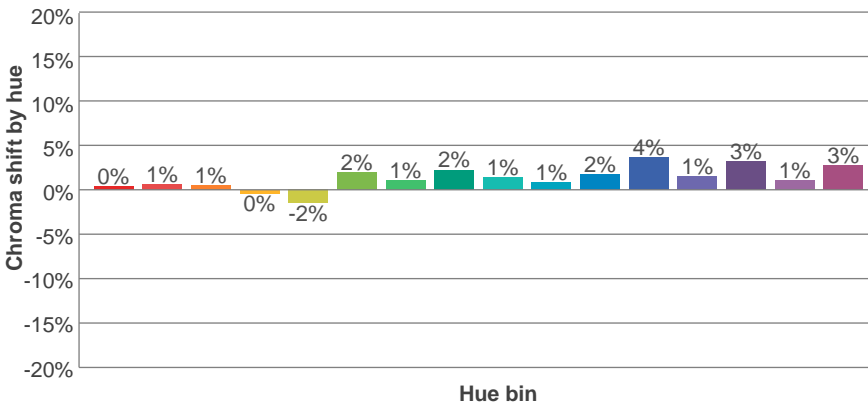
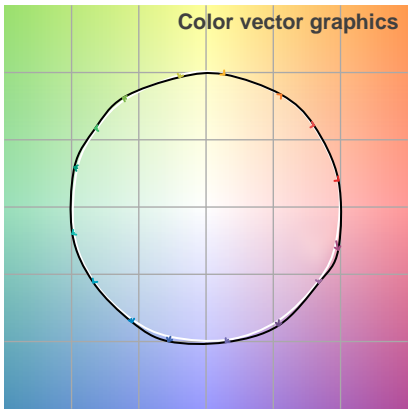
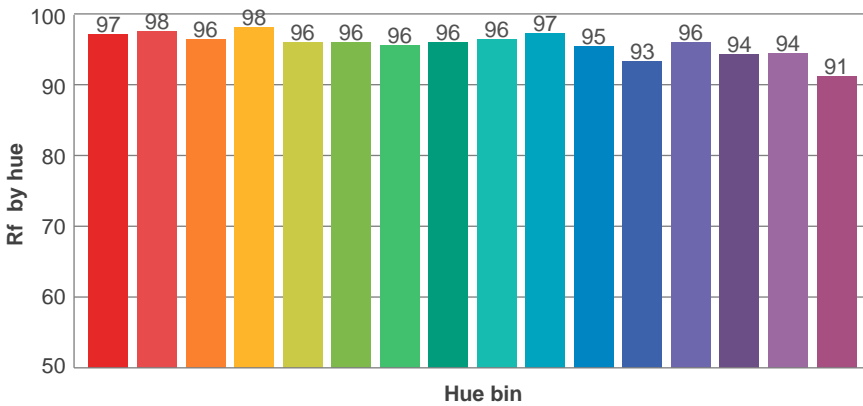
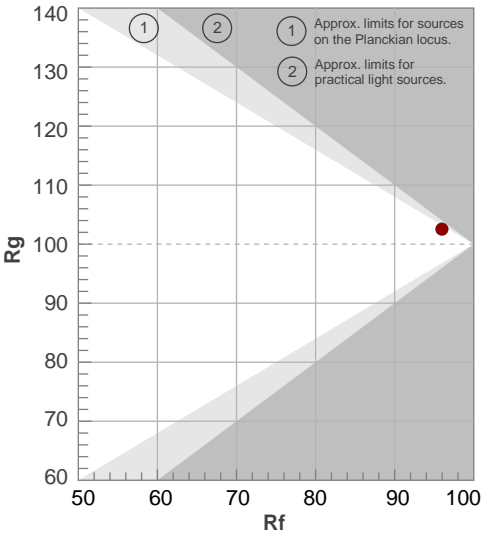
Color temperature	Color rendering index	Red component	Color fidelity	Color gamut	Color quality scale	Color coordinate cie 1931	Color coordinate cie 1931	Color coordinate	Color coordinate	Color deviation from black body
CCT	CRI	CRI R9	TM30 Rf	TM30 Rg	CQS	x	y	u	v	Δuv
3054 K	97.2	97.2	96.0	102.5	96.5	0.432	0.401	0.249	0.346	-0.0008

TM30 details

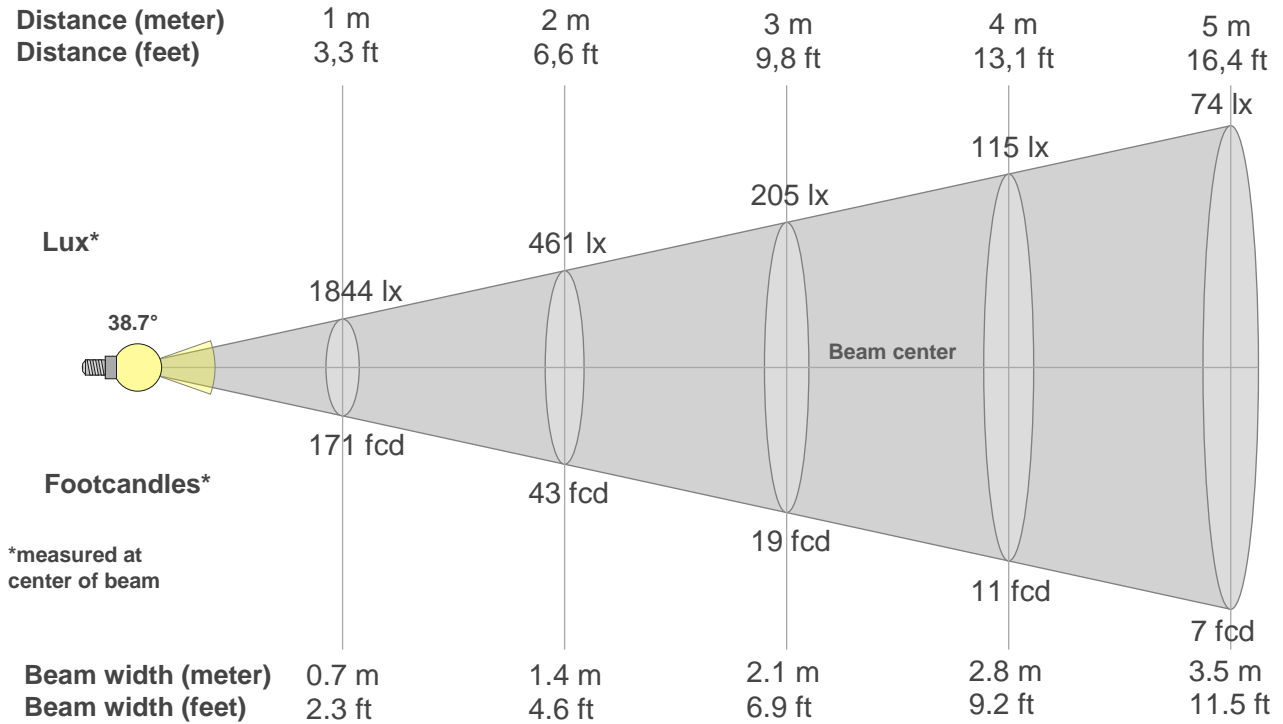
Rf 96.0
Fidelity index Rf

Rg 102.5
Gammut index Rg

Hue Bin	R _f	Graphic shifts (%)	
		Chroma	Hue
1	97	0%	-1%
2	98	1%	-1%
3	96	1%	0%
4	98	0%	-1%
5	96	-2%	1%
6	96	2%	1%
7	96	1%	1%
8	96	2%	0%
9	96	1%	1%
10	97	1%	0%
11	95	2%	2%
12	93	4%	-1%
13	96	1%	-2%
14	94	3%	-3%
15	94	1%	-1%
16	91	3%	-6%



Beam details



Beam intensities from 1-20m

1m	2m	3m	4m	5m	6m	7m	8m	9m	10m	11m	12m	13m	14m	15m	16m	17m	18m	19m	20m
3.3ft	6.6ft	9.8ft	13.1ft	16.4ft	19.7ft	23ft	26.2ft	29.5ft	32.8ft	36.1ft	39.4ft	42.7ft	45.9ft	49.2ft	52.5ft	55.8ft	59.1ft	62.3ft	65.6ft
1844lx	461lx	205lx	115lx	74lx	51lx	38lx	29lx	23lx	18lx	15lx	13lx	11lx	9lx	8lx	7lx	6lx	6lx	5lx	5lx
171.3fcd	42.8fcd	19fcd	10.7fcd	6.9fcd	4.8fcd	3.5fcd	2.7fcd	2.1fcd	1.7fcd	1.4fcd	1.2fcd	1fcd	0.9fcd	0.8fcd	0.7fcd	0.6fcd	0.5fcd	0.5fcd	0.4fcd

Intensities in 0° c-plane

0°	2°	4°	6°	8°	10°	12°	14°	16°	18°	20°	22°	24°	26°	28°	30°	32°	34°	36°	38°
1844	1850	1833	1803	1762	1702	1627	1508	1343	1109	835	584	404	265	159	83	32	8	3	2
100%	100%	99%	98%	96%	92%	88%	82%	73%	60%	45%	32%	22%	14%	9%	4%	2%	0%	0%	0%

Intensities in 90° c-plane

0°	2°	4°	6°	8°	10°	12°	14°	16°	18°	20°	22°	24°	26°	28°	30°	32°	34°	36°	38°
1844	1850	1833	1803	1762	1702	1627	1508	1343	1109	835	584	404	265	159	83	32	8	3	2
100%	100%	99%	98%	96%	92%	88%	82%	73%	60%	45%	32%	22%	14%	9%	4%	2%	0%	0%	0%

Intensities in 180° c-plane

0°	2°	4°	6°	8°	10°	12°	14°	16°	18°	20°	22°	24°	26°	28°	30°	32°	34°	36°	38°
1844	1838	1811	1774	1739	1681	1608	1499	1307	1055	876	738	621	522	429	340	257	176	106	50
100%	100%	98%	96%	94%	91%	87%	81%	71%	57%	48%	40%	34%	28%	23%	18%	14%	10%	6%	3%

Intensities in 270° c-plane

0°	2°	4°	6°	8°	10°	12°	14°	16°	18°	20°	22°	24°	26°	28°	30°	32°	34°	36°	38°
1844	1838	1811	1774	1739	1681	1608	1499	1307	1055	876	738	621	522	429	340	257	176	106	50
100%	100%	98%	96%	94%	91%	87%	81%	71%	57%	48%	40%	34%	28%	23%	18%	14%	10%	6%	3%

Beam angle 50%	Field angle 10%	Cutoff angle 2,5%	Intensity ratio in 120° cone	Intensity ratio in 90° cone
38.7°	61.2°	69.5°	99.0%	98.7%

THIS PAGE INTENTIONALLY LEFT BLANK