

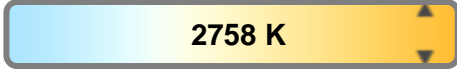
Light efficiency:



Light quality:



Color temperature:



Output: 493 lm

Peak: 1130 cd

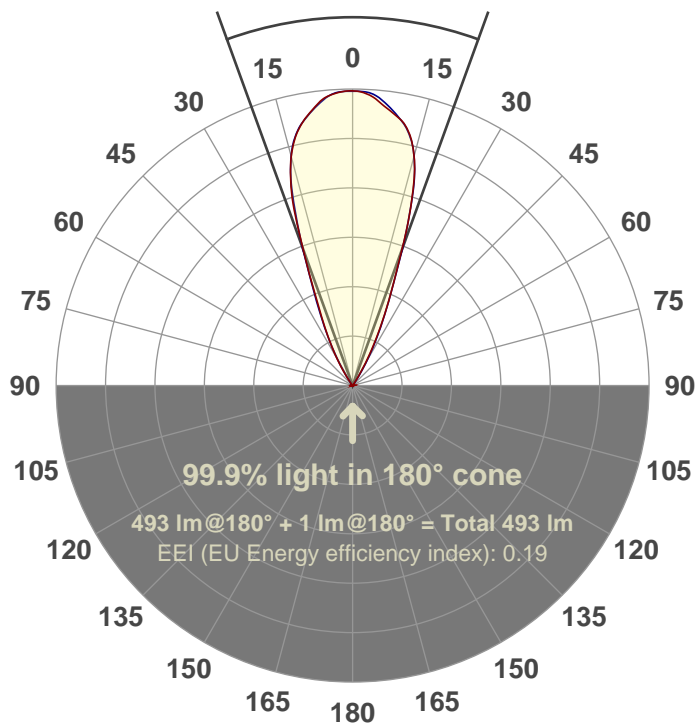
Power: 8.1 W

PF: 0.93



Beam angle

39.9°



**Test number:
GR-XT8-27K-FL-RD**

Luminaire Model:

**Date and time:
9/27/2018 5:27:21 PM**

**Description:
8 watts 40°**

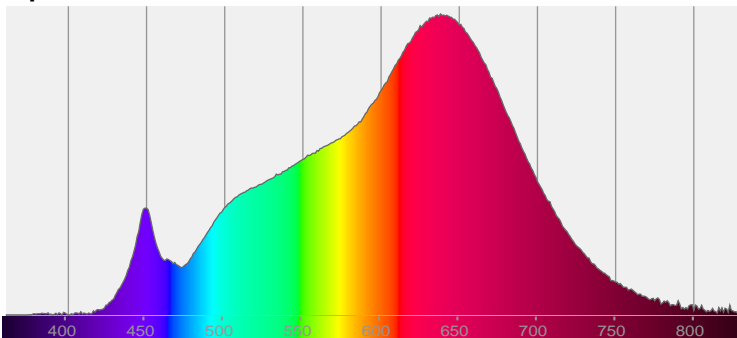
LUM: 493

PPF: 10.1

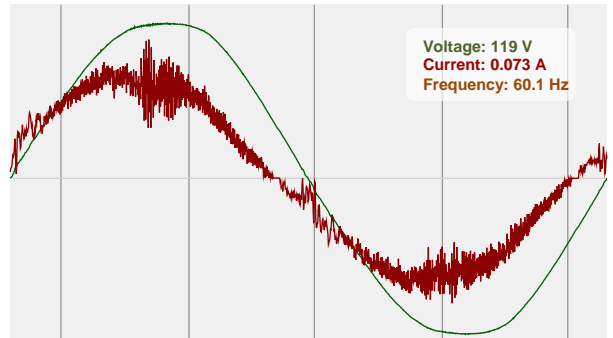


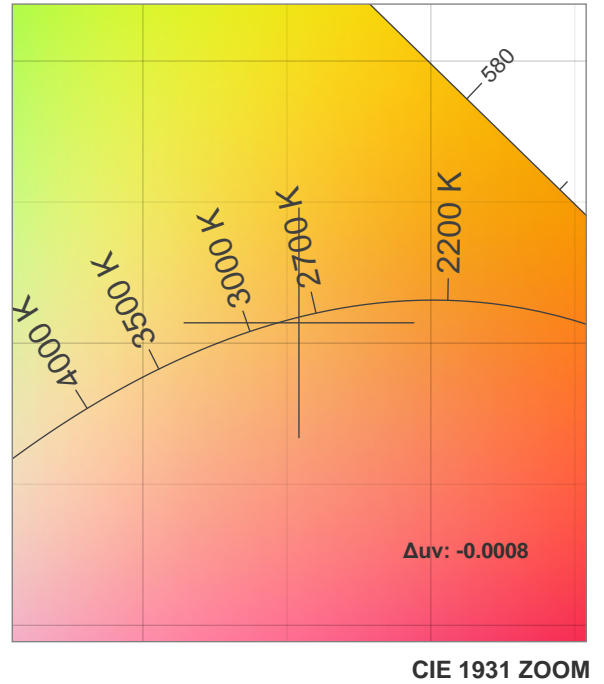
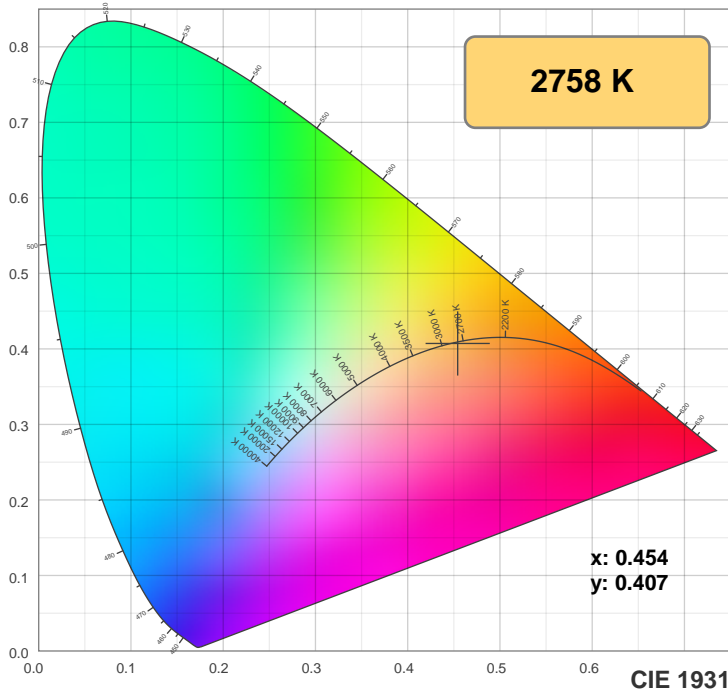
**CIE 1931
x: 0.454
y: 0.407**

Spectra

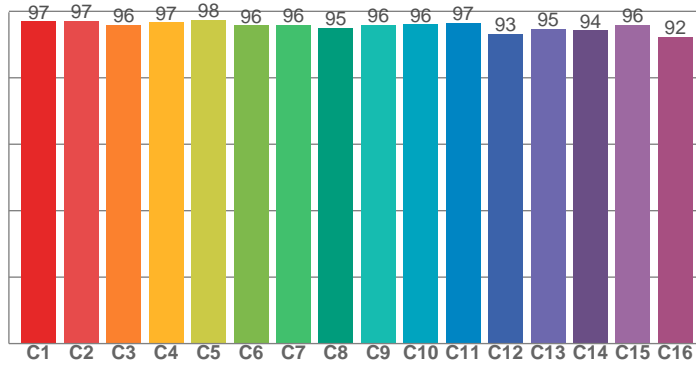


Power

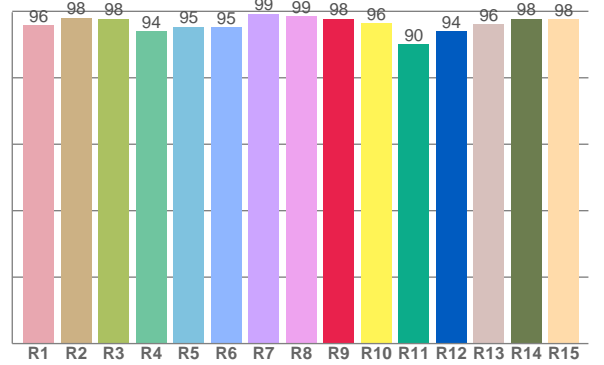




TM30: 95.9



CRI: 96.8 (R1-R8)



CRI R values, only R1-R8 are used to calculate final CRI value

R1	R2	R3	R4	R5	R6	R7	R8	R9	R10	R11	R12	R13	R14	R15
95.9	98.1	97.7	94.1	95.4	95.3	99.3	98.6	97.8	96.4	90.0	94.0	96.1	97.8	97.6

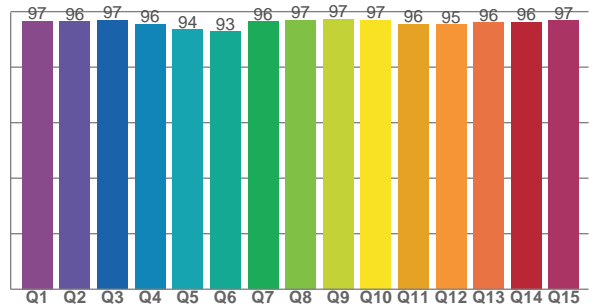
TM30 C values, 16 binned values out of total of 99 C values

C1	C2	C3	C4	C5	C6	C7	C8	C9	C10	C11	C12	C13	C14	C15	C16
97.0	97.2	96.0	96.7	97.5	95.8	95.9	95.1	95.8	96.1	96.5	93.3	94.8	94.3	96.0	92.3

CQS Q values

Q1	Q2	Q3	Q4	Q5	Q6	Q7	Q8	Q9	Q10	Q11	Q12	Q13	Q14	Q15
96.6	96.5	96.9	95.6	93.5	92.8	96.4	97.0	97.4	97.1	95.6	95.3	96.1	96.2	96.7

CQS: 95.6



Color parameters

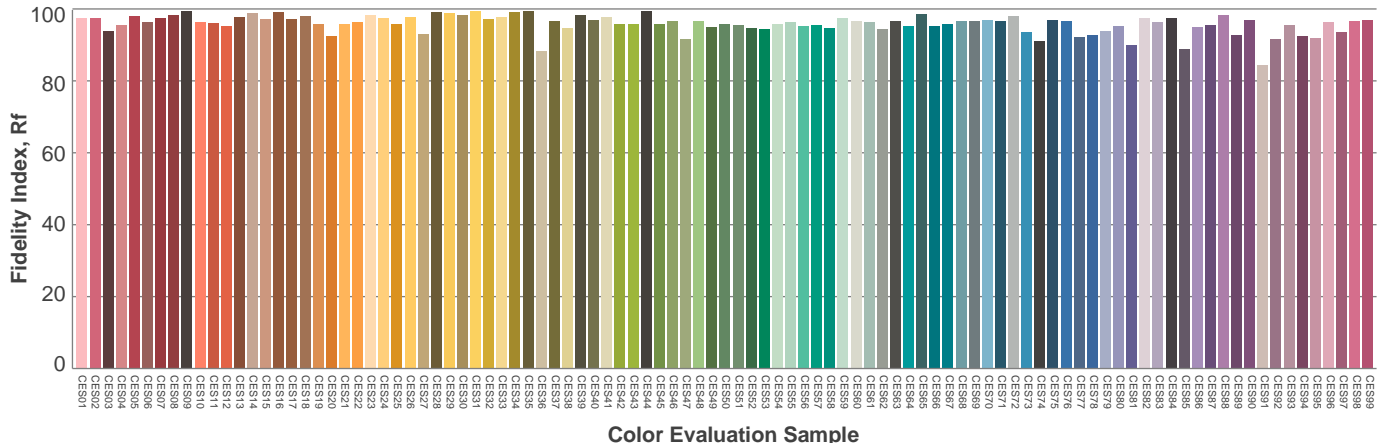
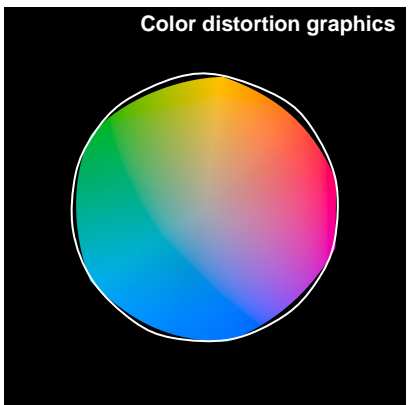
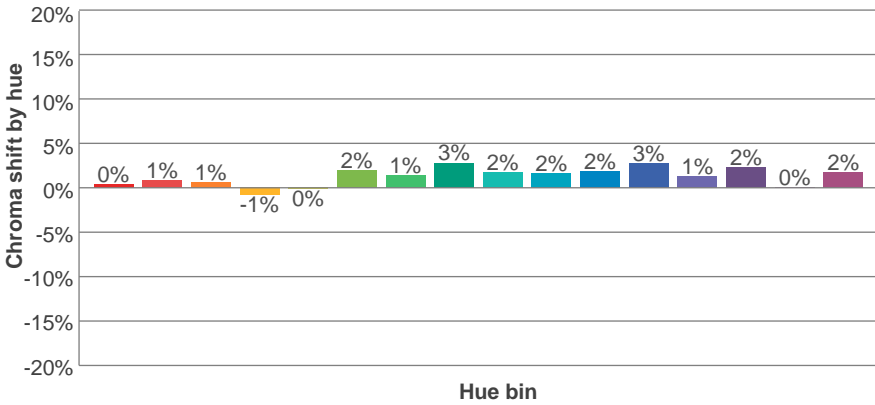
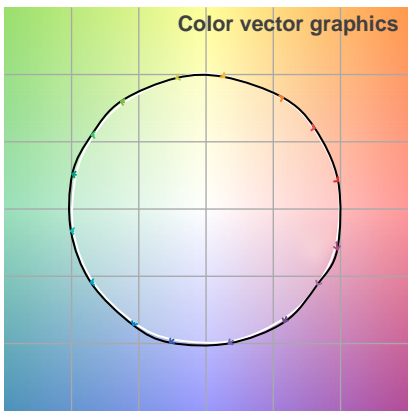
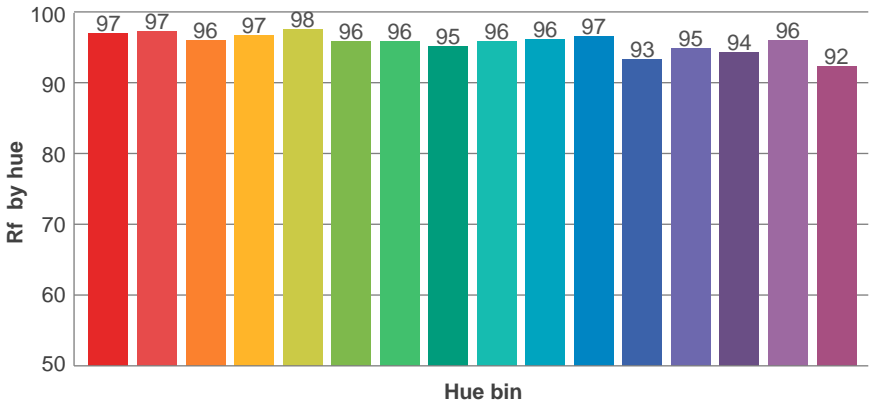
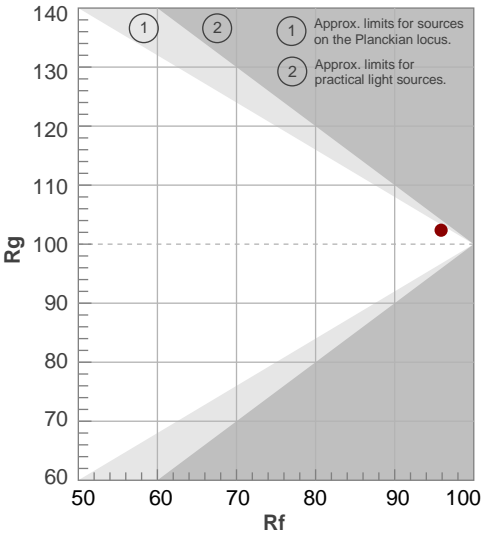
Color temperature	Color rendering index	Red component	Color fidelity	Color gamut	Color quality scale	Color coordinate cie 1931	Color coordinate cie 1931	Color coordinate	Color coordinate	Color diviation from black body
CCT	CRI	CRI R9	TM30 Rf	TM30 Rg	CQS	x	y	u	v	Δuv
2758 K	96.8	97.8	95.9	102.4	95.6	0.454	0.407	0.260	0.350	-0.0008

TM30 details

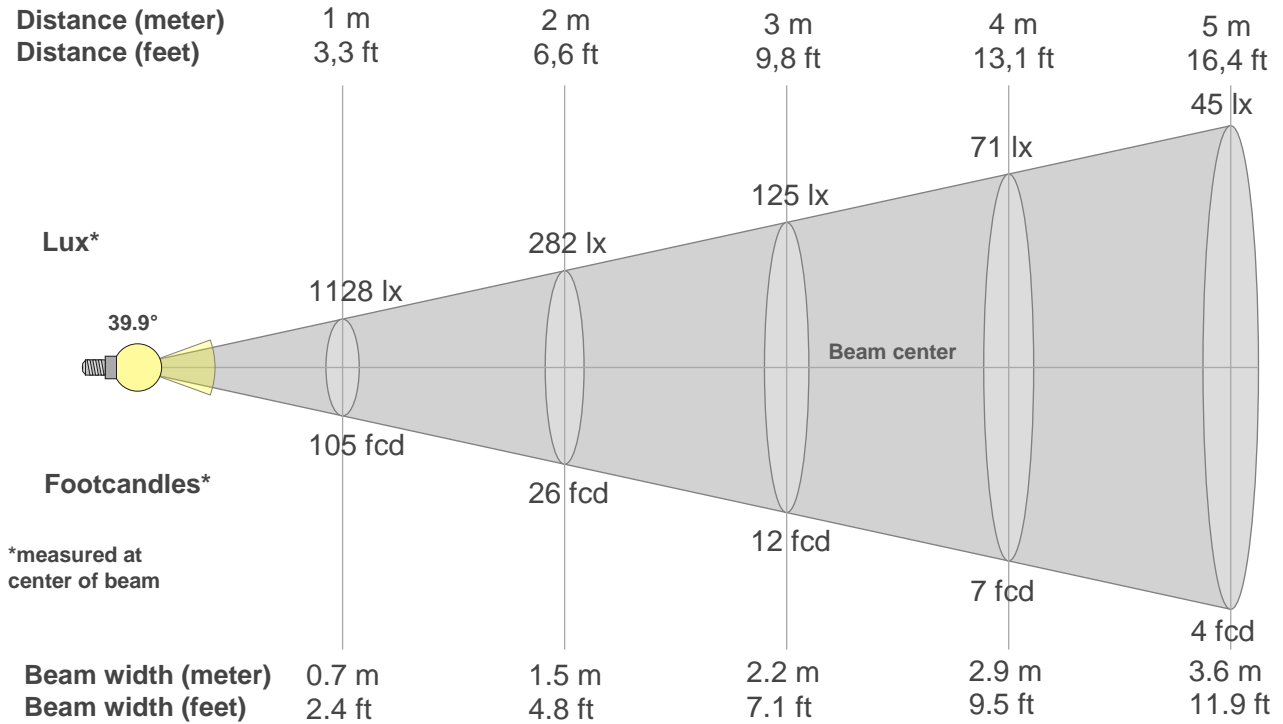
Rf 95.9
Fidelity index Rf

Rg 102.4
Gammut index Rg

Hue Bin	R _f	Graphic shifts (%)	
		Chroma	Hue
1	97	0%	0%
2	97	1%	-1%
3	96	1%	-1%
4	97	-1%	-1%
5	98	0%	1%
6	96	2%	2%
7	96	1%	1%
8	95	3%	0%
9	96	2%	-1%
10	96	2%	-1%
11	97	2%	0%
12	93	3%	-2%
13	95	1%	-3%
14	94	2%	-3%
15	96	0%	-1%
16	92	2%	-5%



Beam details



Beam intensities from 1-20m

1m	2m	3m	4m	5m	6m	7m	8m	9m	10m	11m	12m	13m	14m	15m	16m	17m	18m	19m	20m
3.3ft	6.6ft	9.8ft	13.1ft	16.4ft	19.7ft	23ft	26.2ft	29.5ft	32.8ft	36.1ft	39.4ft	42.7ft	45.9ft	49.2ft	52.5ft	55.8ft	59.1ft	62.3ft	65.6ft
1128lx	282lx	125lx	71lx	45lx	31lx	23lx	18lx	14lx	11lx	9lx	8lx	7lx	6lx	5lx	4lx	4lx	3lx	3lx	3lx
104.8fcd	26.2fcd	11.6fcd	6.6fcd	4.2fcd	2.9fcd	2.1fcd	1.6fcd	1.3fcd	1fcd	0.9fcd	0.7fcd	0.6fcd	0.5fcd	0.5fcd	0.4fcd	0.4fcd	0.3fcd	0.3fcd	0.3fcd

Intensities in 0° c-plane

0°	2°	4°	6°	8°	10°	12°	14°	16°	18°	20°	22°	24°	26°	28°	30°	32°	34°	36°	38°
1128	1127	1118	1103	1073	1040	999	942	860	742	558	409	303	231	171	121	77	41	17	5
100%	100%	99%	98%	95%	92%	89%	83%	76%	66%	49%	36%	27%	20%	15%	11%	7%	4%	2%	0%

Intensities in 90° c-plane

0°	2°	4°	6°	8°	10°	12°	14°	16°	18°	20°	22°	24°	26°	28°	30°	32°	34°	36°	38°
1128	1128	1118	1098	1070	1039	1004	946	855	721	562	413	314	236	169	111	63	28	11	4
100%	100%	99%	97%	95%	92%	89%	84%	76%	64%	50%	37%	28%	21%	15%	10%	6%	3%	1%	0%

Intensities in 180° c-plane

0°	2°	4°	6°	8°	10°	12°	14°	16°	18°	20°	22°	24°	26°	28°	30°	32°	34°	36°	38°
1128	1124	1110	1084	1061	1037	1003	948	860	719	559	416	312	225	154	95	48	18	5	3
100%	100%	98%	96%	94%	92%	89%	84%	76%	64%	50%	37%	28%	20%	14%	8%	4%	2%	0%	0%

Intensities in 270° c-plane

0°	2°	4°	6°	8°	10°	12°	14°	16°	18°	20°	22°	24°	26°	28°	30°	32°	34°	36°	38°
1128	1128	1118	1098	1070	1039	1004	946	855	721	562	413	314	236	169	111	63	28	11	4
100%	100%	99%	97%	95%	92%	89%	84%	76%	64%	50%	37%	28%	21%	15%	10%	6%	3%	1%	0%

Beam angle 50%	Field angle 10%	Cutoff angle 2,5%	Intensity ratio in 120° cone	Intensity ratio in 90° cone
39.9°	59.8°	68°	99.5%	99.1%

THIS PAGE INTENTIONALLY LEFT BLANK