

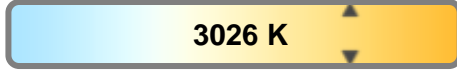
Light efficiency:



Light quality:



Color temperature:

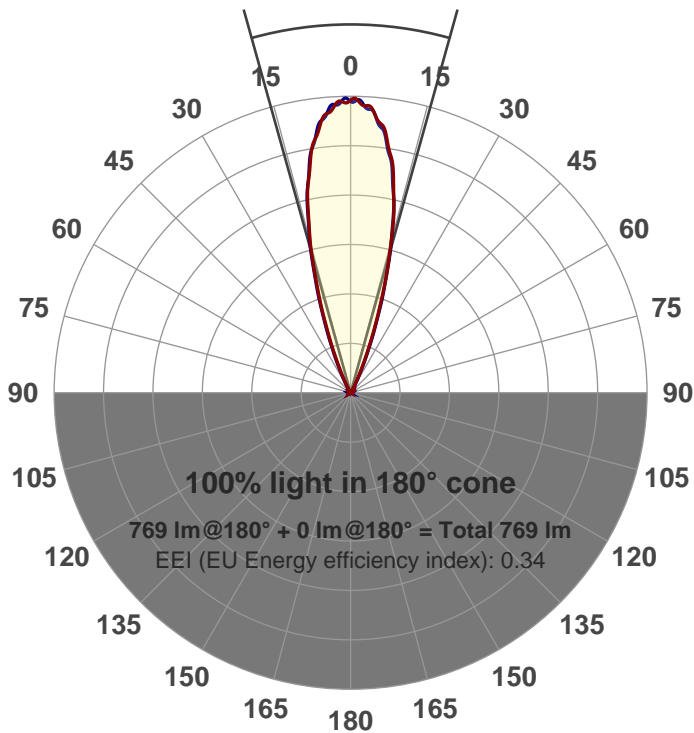


Output: 769 lm
Peak: 2696 cd
Power: 20.5 W
PF: 0.98



Beam angle

31.2°



Product name:
GRF-XT17-FL-RD-91A
Item number:
GRF-XT17-FL-RD-91A
Date and time:
6/19/2017 10:48:56 AM
Description:
700mA

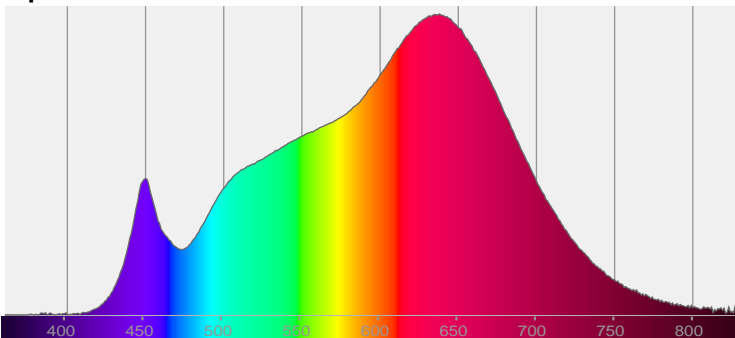
LUM: 769

PPF: 15.1

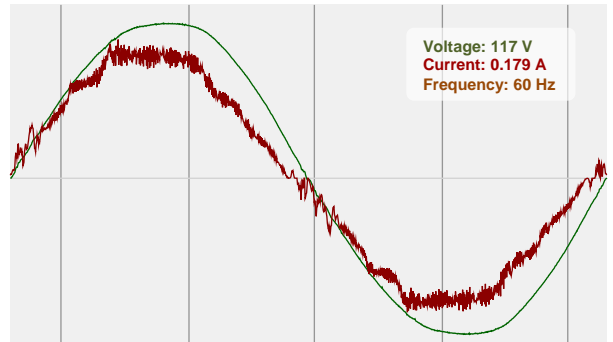


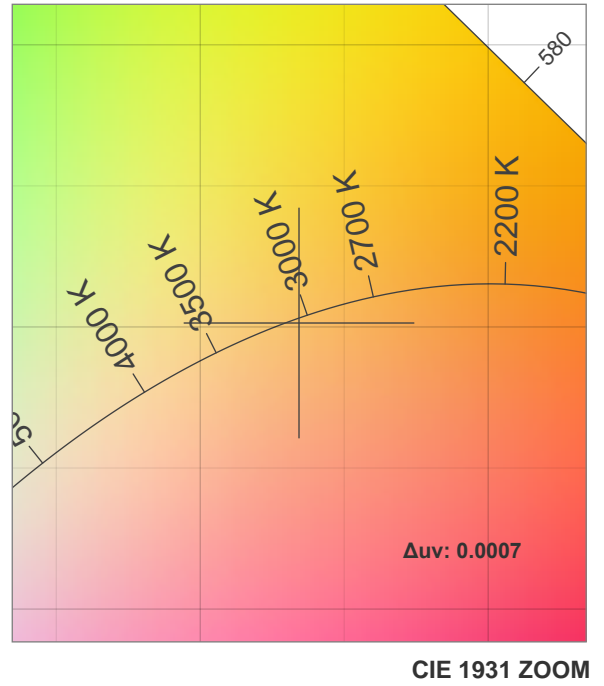
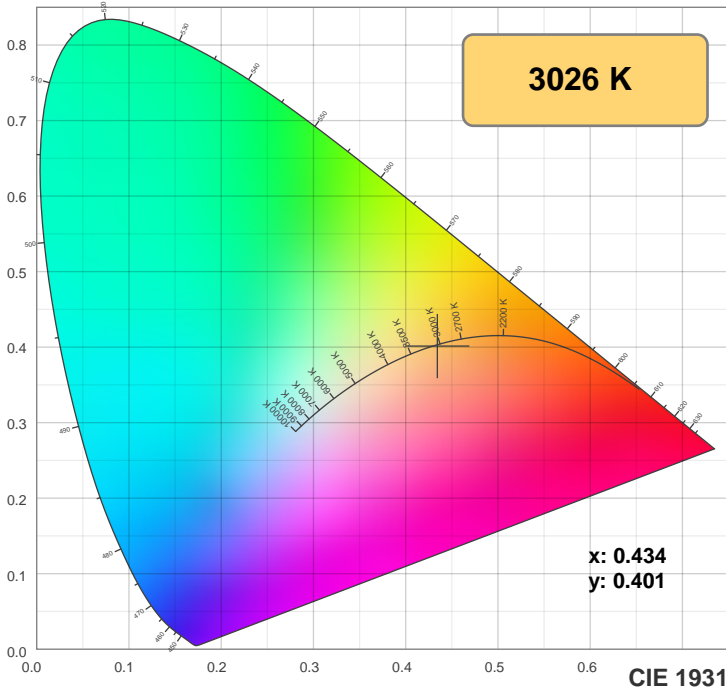
CIE 1931
x: 0.434
y: 0.401

Spectra

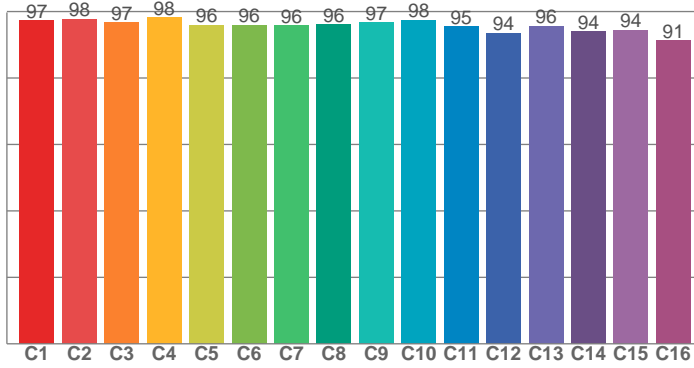


Power

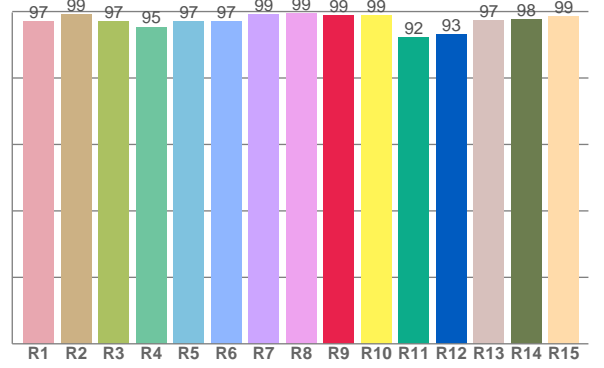




TM30: 96.1



CRI: 97.7 (R1-R8)



CRI R values, only R1-R8 are used to calculate final CRI value

R1	R2	R3	R4	R5	R6	R7	R8	R9	R10	R11	R12	R13	R14	R15
97.1	99.1	97.1	95.4	97.1	97.1	99.1	99.4	98.9	98.8	92.1	93.1	97.4	97.6	98.5

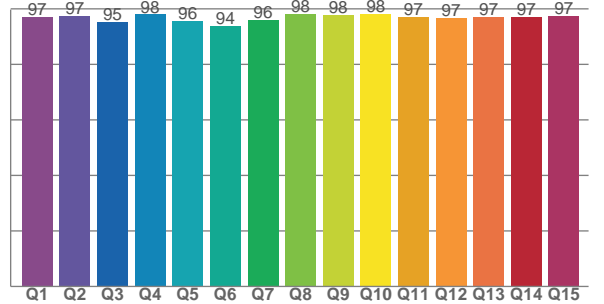
TM30 C values, 16 binned values out of total of 99 C values

C1	C2	C3	C4	C5	C6	C7	C8	C9	C10	C11	C12	C13	C14	C15	C16
97.2	97.8	96.7	98.2	95.9	96.0	95.8	96.1	96.7	97.5	95.4	93.6	95.7	93.9	94.5	91.3

CQS Q values

Q1	Q2	Q3	Q4	Q5	Q6	Q7	Q8	Q9	Q10	Q11	Q12	Q13	Q14	Q15
97.0	97.5	95.3	98.0	95.6	93.9	96.1	98.2	97.8	98.2	97.2	96.7	97.2	97.1	97.4

CQS: 96.5



Color parameters

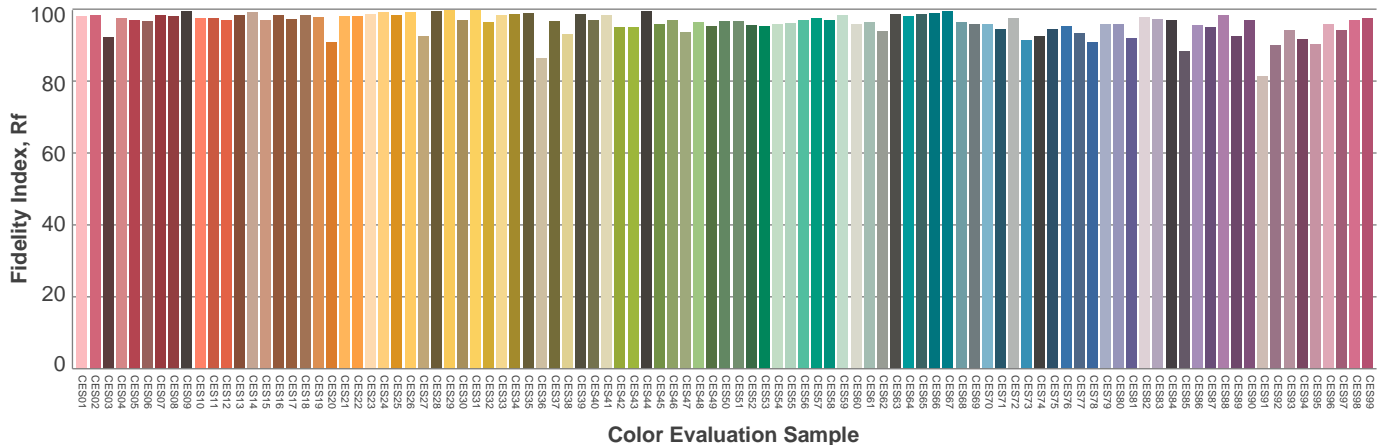
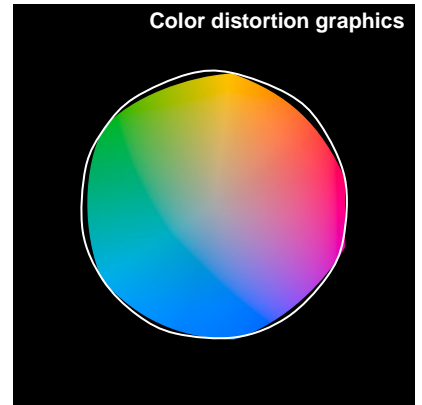
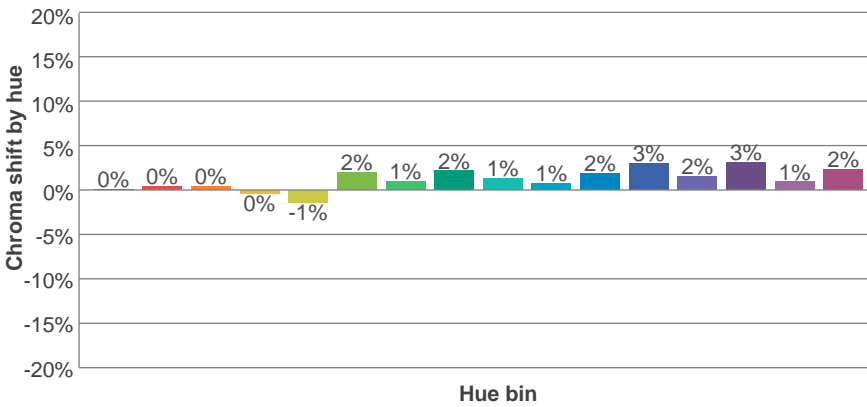
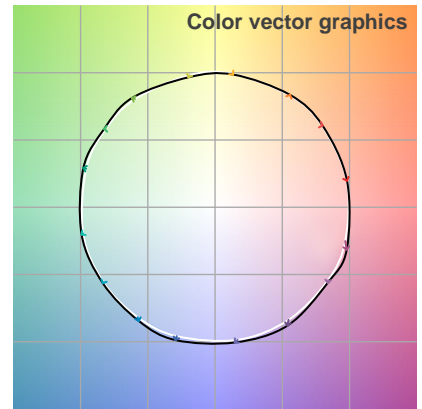
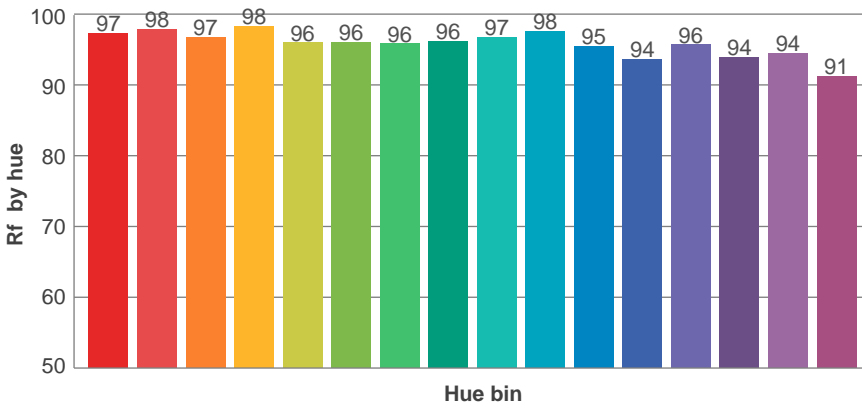
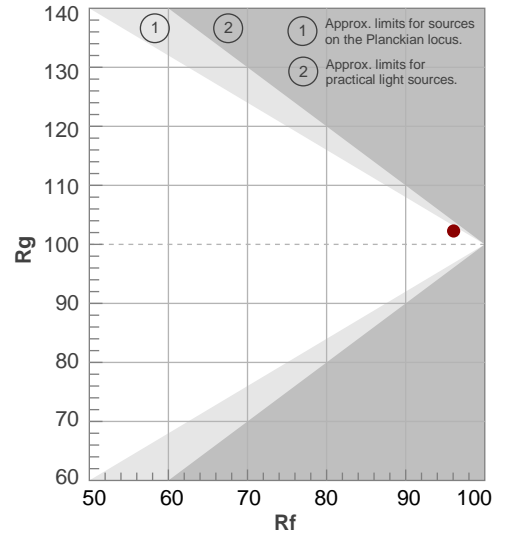
Color temperature	Color rendering index	Red component	Color fidelity	Color gamut	Color quality scale	Color coordinate cie 1931	Color coordinate cie 1931	Color coordinate	Color coordinate	Color deviation from black body
CCT	CRI	CRI R9	TM30 Rf	TM30 Rg	CQS	x	y	u	v	Δuv
3026 K	97.7	98.9	96.1	102.3	96.5	0.434	0.401	0.250	0.347	0.0007

TM30 details

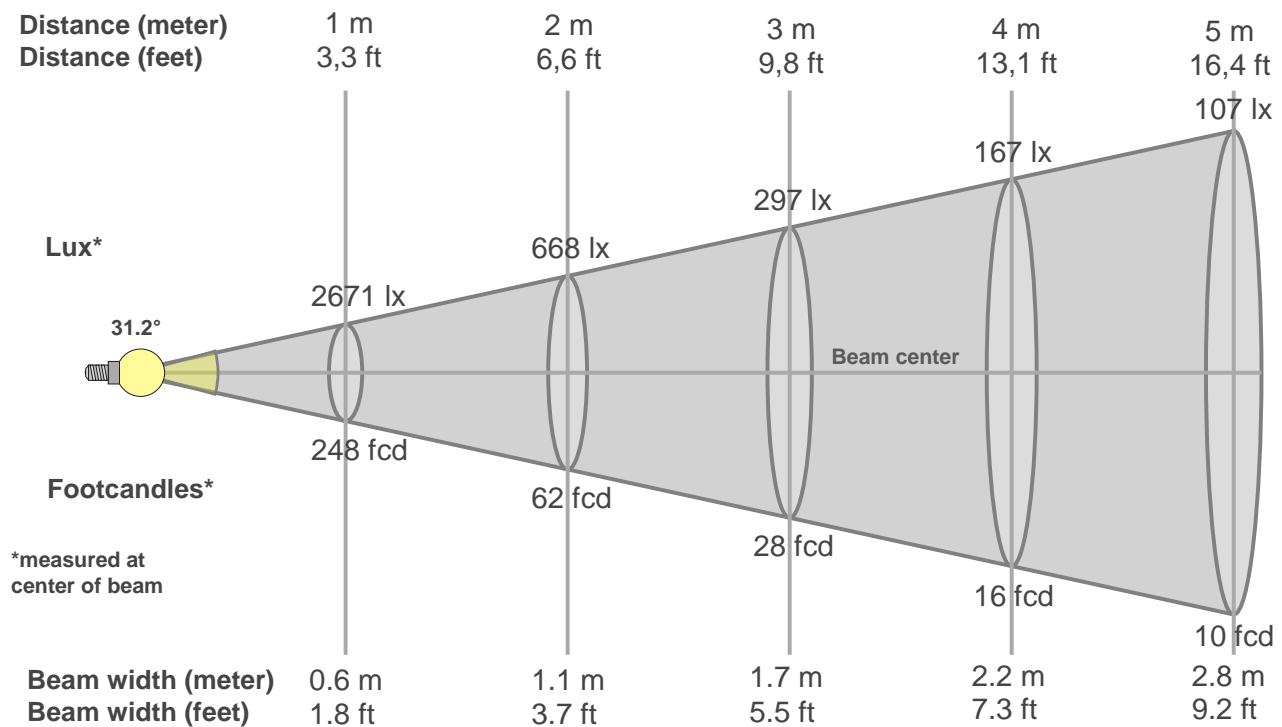
Rf 96.1
Fidelity index Rf

Rg 102.3
Gammut index Rg

Hue Bin	R _f	Graphic shifts (%)	
		Chroma	Hue
1	97	0%	0%
2	98	0%	-1%
3	97	0%	0%
4	98	0%	-1%
5	96	-1%	1%
6	96	2%	1%
7	96	1%	1%
8	96	2%	0%
9	97	1%	1%
10	98	1%	0%
11	95	2%	2%
12	94	3%	0%
13	96	2%	-2%
14	94	3%	-3%
15	94	1%	-2%
16	91	2%	-6%



Beam details



Beam intensities from 1-20m

1m	2m	3m	4m	5m	6m	7m	8m	9m	10m	11m	12m	13m	14m	15m	16m	17m	18m	19m	20m
3.3ft	6.6ft	9.8ft	13.1ft	16.4ft	19.7ft	23ft	26.2ft	29.5ft	32.8ft	36.1ft	39.4ft	42.7ft	45.9ft	49.2ft	52.5ft	55.8ft	59.1ft	62.3ft	65.6ft
2671lx	668lx	297lx	167lx	107lx	74lx	55lx	42lx	33lx	27lx	22lx	19lx	16lx	14lx	12lx	10lx	9lx	8lx	7lx	7lx
248.1fcd	62fcd	27.6fcd	15.5fcd	9.9fcd	6.9fcd	5.1fcd	3.9fcd	3.1fcd	2.5fcd	2.1fcd	1.7fcd	1.5fcd	1.3fcd	1.1fcd	1fcd	0.9fcd	0.8fcd	0.7fcd	0.6fcd

Intensities in 0° c-plane

0°	2°	4°	6°	8°	10°	12°	14°	16°	18°	20°	22°	24°	26°	28°	30°	32°	34°	36°	38°
2671	2669	2583	2512	2342	2129	1893	1569	1263	943	660	439	265	153	87	49	28	17	11	8
100%	100%	97%	94%	88%	80%	71%	59%	47%	35%	25%	16%	10%	6%	3%	2%	1%	1%	0%	0%

Intensities in 90° c-plane

0°	2°	4°	6°	8°	10°	12°	14°	16°	18°	20°	22°	24°	26°	28°	30°	32°	34°	36°	38°
2671	2656	2630	2509	2340	2158	1901	1587	1290	982	703	483	315	192	115	68	40	24	15	10
100%	99%	98%	94%	88%	81%	71%	59%	48%	37%	26%	18%	12%	7%	4%	3%	1%	1%	1%	0%

Intensities in 180° c-plane

0°	2°	4°	6°	8°	10°	12°	14°	16°	18°	20°	22°	24°	26°	28°	30°	32°	34°	36°	38°
2671	2647	2624	2491	2363	2169	1893	1618	1273	950	669	435	267	155	86	49	27	16	11	8
100%	99%	98%	93%	88%	81%	71%	61%	48%	36%	25%	16%	10%	6%	3%	2%	1%	1%	0%	0%

Intensities in 270° c-plane

0°	2°	4°	6°	8°	10°	12°	14°	16°	18°	20°	22°	24°	26°	28°	30°	32°	34°	36°	38°
2671	2672	2599	2467	2334	2145	1878	1590	1292	980	696	476	308	187	112	67	39	23	14	9
100%	100%	97%	92%	87%	80%	70%	60%	48%	37%	26%	18%	12%	7%	4%	3%	1%	1%	1%	0%

Beam angle 50%	Field angle 10%	Cutoff angle 2,5%	Intensity ratio in 120° cone	Intensity ratio in 90° cone
31.2°	48.6°	58.9°	1.0%	1.0%

THIS PAGE INTENSIONALLY LEFT BLANK