

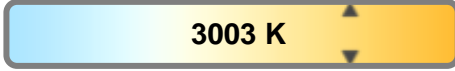
Light efficiency:



Light quality:



Color temperature:

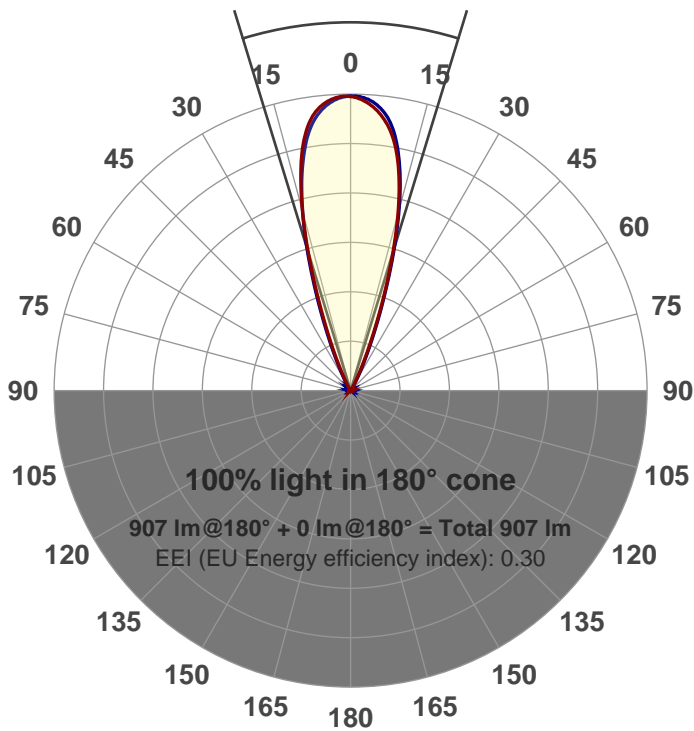


Output: 907 lm
Peak: 2818 cd
Power: 20.6 W
PF: 0.98



Beam angle

34°



Product name:
GRF-X197-WF-RD-91A SR
Item number:
GRF-X197-WF-RD-91A
Date and time:
6/19/2017 11:34:16 AM
Description:
700mA SR

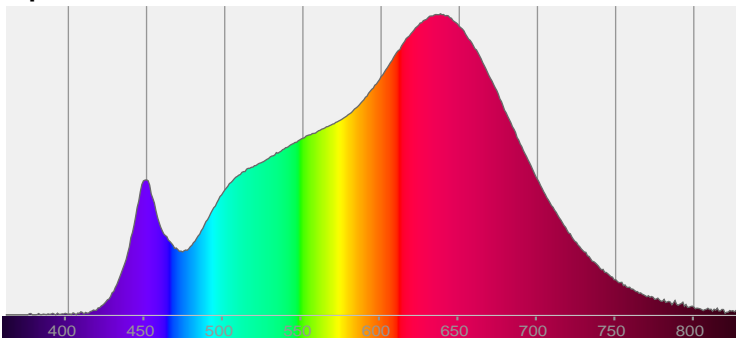
LUM: 907

PPF: 17.9

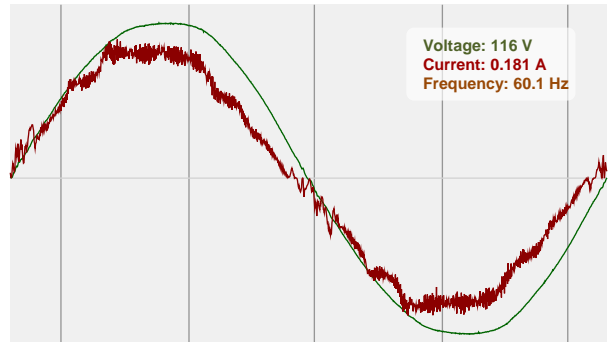


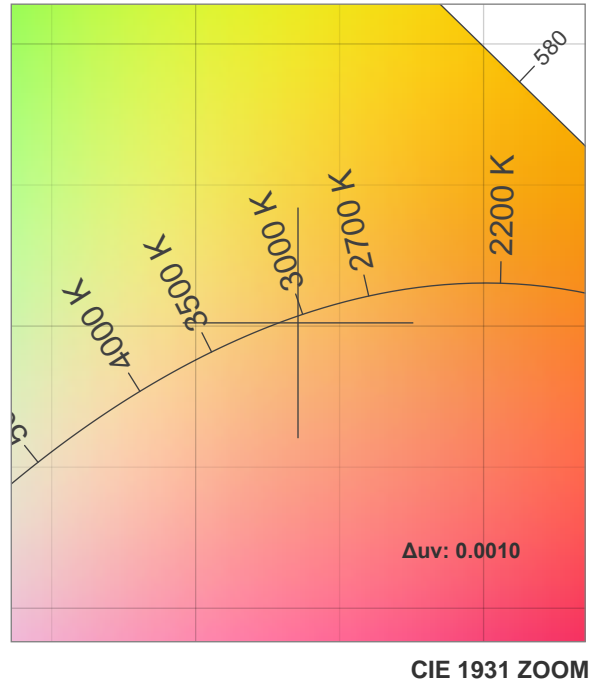
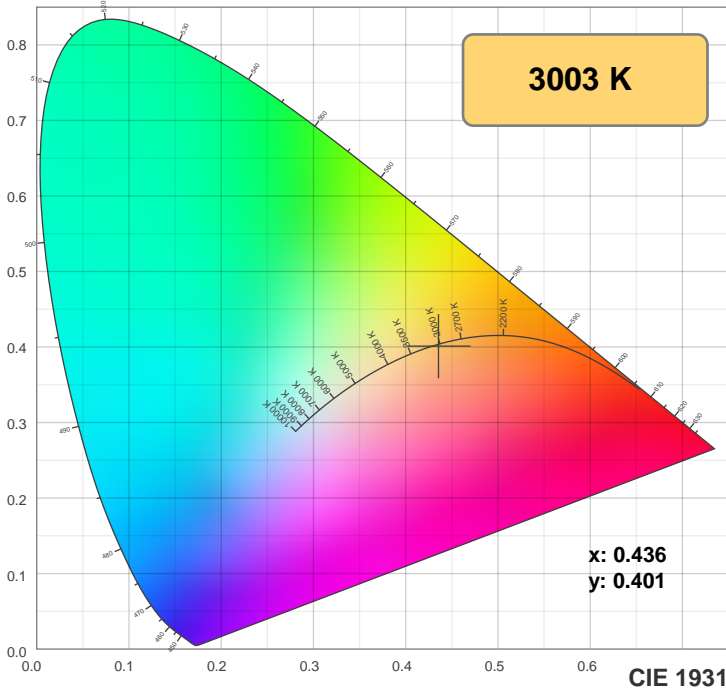
CIE 1931
x: 0.436
y: 0.401

Spectra

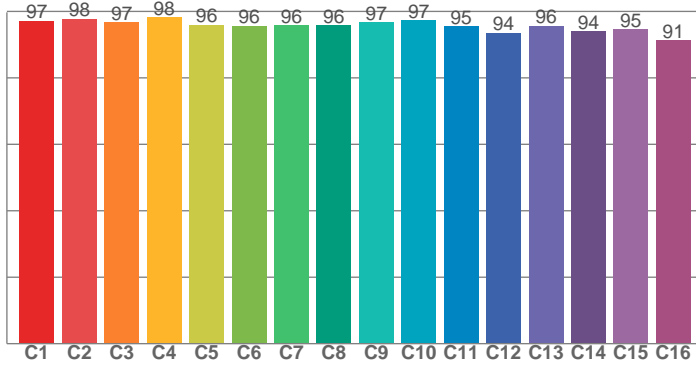


Power

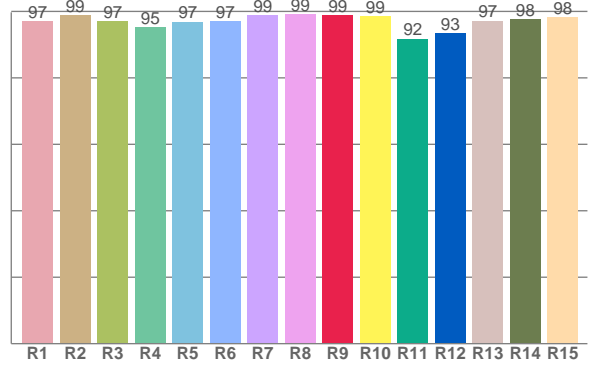




TM30: 96.0



CRI: 97.5 (R1-R8)



CRI R values, only R1-R8 are used to calculate final CRI value

R1	R2	R3	R4	R5	R6	R7	R8	R9	R10	R11	R12	R13	R14	R15
96.9	98.9	97.1	95.1	96.9	96.9	98.9	99.1	98.9	98.5	91.8	93.3	97.2	97.5	98.2

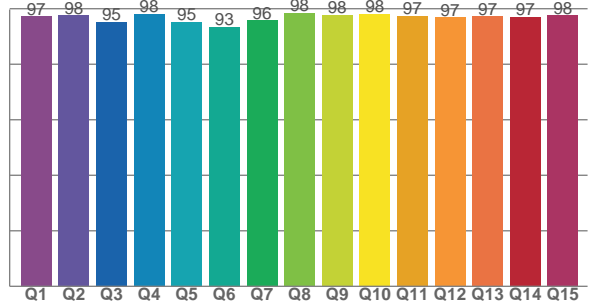
TM30 C values, 16 binned values out of total of 99 C values

C1	C2	C3	C4	C5	C6	C7	C8	C9	C10	C11	C12	C13	C14	C15	C16
97.2	97.8	96.6	98.1	95.9	95.6	95.8	95.9	96.6	97.3	95.4	93.5	95.7	94.0	94.6	91.2

CQS Q values

Q1	Q2	Q3	Q4	Q5	Q6	Q7	Q8	Q9	Q10	Q11	Q12	Q13	Q14	Q15
97.2	97.5	95.2	98.0	95.3	93.4	95.8	98.3	97.8	98.0	97.3	96.8	97.2	97.0	97.5

CQS: 96.4



Color parameters

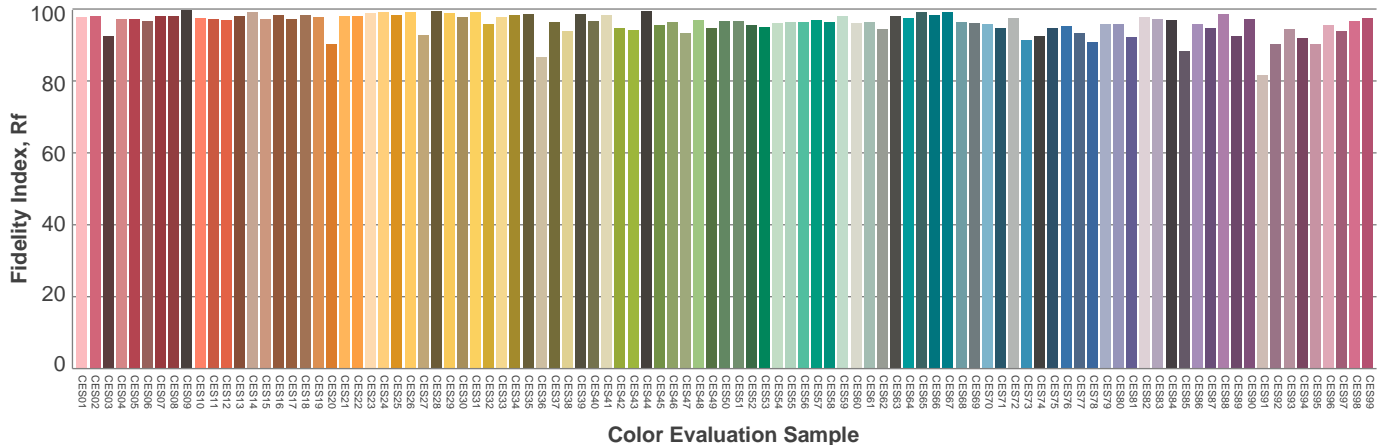
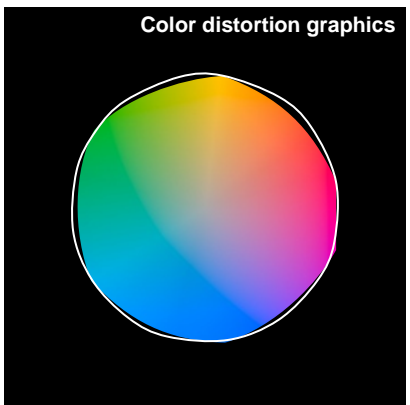
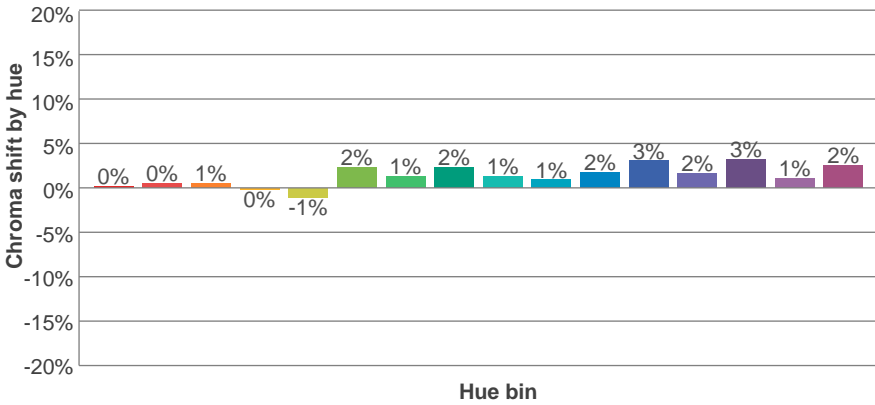
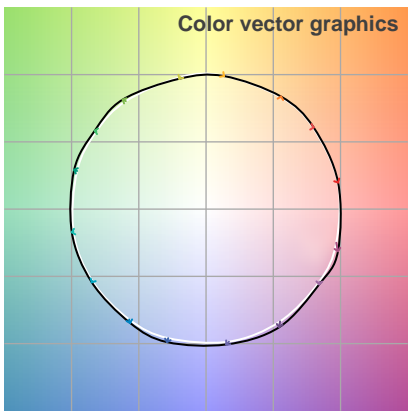
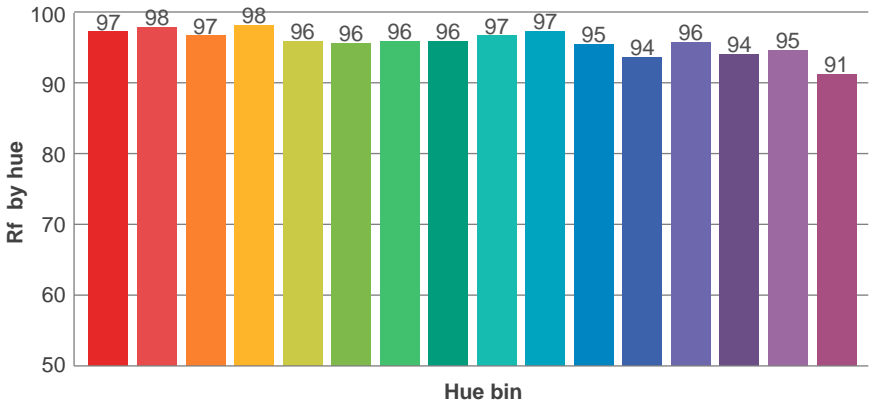
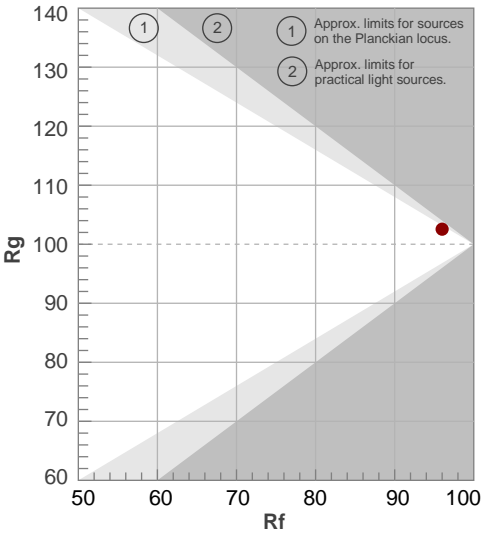
Color temperature	Color rendering index	Red component	Color fidelity	Color gamut	Color quality scale	Color coordinate cie 1931	Color coordinate cie 1931	Color coordinate	Color coordinate	Color deviation from black body
CCT	CRI	CRI R9	TM30 Rf	TM30 Rg	CQS	x	y	u	v	Δuv
3003 K	97.5	98.9	96.0	102.6	96.4	0.436	0.401	0.251	0.347	0.0010

TM30 details

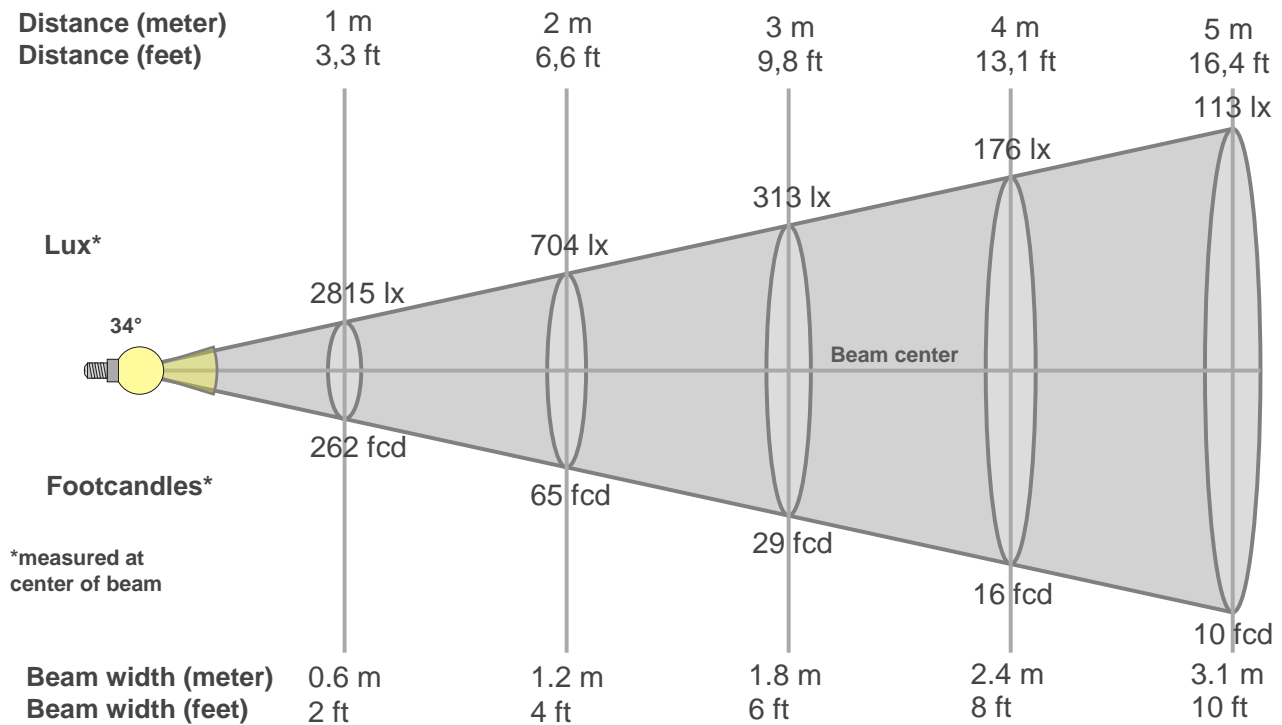
Rf 96.0
Fidelity index Rf

Rg 102.6
Gammut index Rg

Hue Bin	R _f	Graphic shifts (%)	
		Chroma	Hue
1	97	0%	-1%
2	98	0%	-1%
3	97	1%	0%
4	98	0%	0%
5	96	-1%	1%
6	96	2%	1%
7	96	1%	0%
8	96	2%	0%
9	97	1%	0%
10	97	1%	0%
11	95	2%	2%
12	94	3%	0%
13	96	2%	-2%
14	94	3%	-3%
15	95	1%	-2%
16	91	2%	-6%



Beam details



Beam intensities from 1-20m

1m	2m	3m	4m	5m	6m	7m	8m	9m	10m	11m	12m	13m	14m	15m	16m	17m	18m	19m	20m
3.3ft	6.6ft	9.8ft	13.1ft	16.4ft	19.7ft	23ft	26.2ft	29.5ft	32.8ft	36.1ft	39.4ft	42.7ft	45.9ft	49.2ft	52.5ft	55.8ft	59.1ft	62.3ft	65.6ft
2815lx	704lx	313lx	176lx	113lx	78lx	57lx	44lx	35lx	28lx	23lx	20lx	17lx	14lx	13lx	11lx	10lx	9lx	8lx	7lx
261.5fcd	65.4fcd	29.1fcd	16.3fcd	10.5fcd	7.3fcd	5.3fcd	4.1fcd	3.2fcd	2.6fcd	2.2fcd	1.8fcd	1.5fcd	1.3fcd	1.2fcd	1fcd	0.9fcd	0.8fcd	0.7fcd	0.7fcd

Intensities in 0° c-plane

0°	2°	4°	6°	8°	10°	12°	14°	16°	18°	20°	22°	24°	26°	28°	30°	32°	34°	36°	38°
2815	2814	2787	2734	2643	2490	2264	1954	1587	1192	825	537	324	184	100	55	31	19	13	10
100%	100%	99%	97%	94%	88%	80%	69%	56%	42%	29%	19%	12%	7%	4%	2%	1%	1%	0%	0%

Intensities in 90° c-plane

0°	2°	4°	6°	8°	10°	12°	14°	16°	18°	20°	22°	24°	26°	28°	30°	32°	34°	36°	38°
2815	2802	2762	2694	2589	2430	2206	1928	1607	1249	909	618	404	252	152	89	51	30	19	13
100%	100%	98%	96%	92%	86%	78%	68%	57%	44%	32%	22%	14%	9%	5%	3%	2%	1%	1%	0%

Intensities in 180° c-plane

0°	2°	4°	6°	8°	10°	12°	14°	16°	18°	20°	22°	24°	26°	28°	30°	32°	34°	36°	38°
2815	2788	2739	2664	2560	2408	2194	1912	1574	1204	848	550	333	190	102	55	30	18	12	10
100%	99%	97%	95%	91%	86%	78%	68%	56%	43%	30%	20%	12%	7%	4%	2%	1%	1%	0%	0%

Intensities in 270° c-plane

0°	2°	4°	6°	8°	10°	12°	14°	16°	18°	20°	22°	24°	26°	28°	30°	32°	34°	36°	38°
2815	2811	2778	2718	2618	2462	2238	1955	1613	1247	900	615	400	250	150	88	50	28	17	12
100%	100%	99%	97%	93%	87%	79%	69%	57%	44%	32%	22%	14%	9%	5%	3%	2%	1%	1%	0%

Beam angle 50%	Field angle 10%	Cutoff angle 2,5%	Intensity ratio in 120° cone	Intensity ratio in 90° cone
34°	50.1°	60°	1.0%	1.0%

THIS PAGE INTENSIONALLY LEFT BLANK