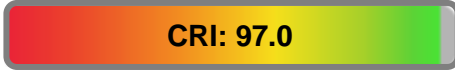


Light efficiency:



Light quality:



Color temperature:

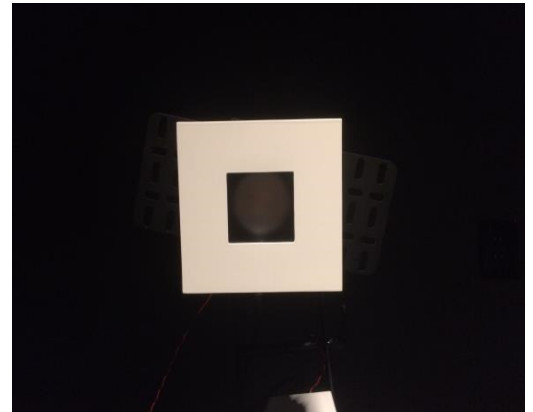


Output: 367 lm

Peak: 1041 cd

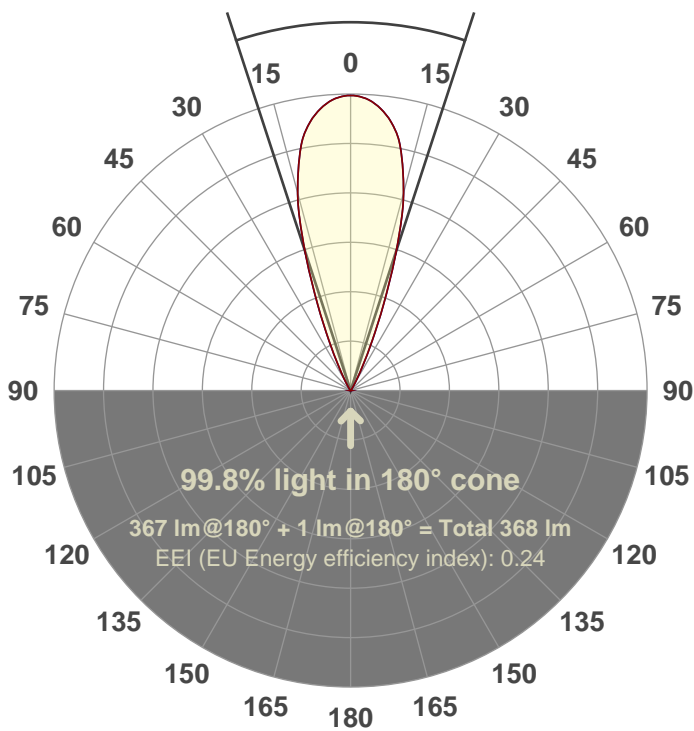
Power: 8.1 W

PF: 0.93



Beam angle

36.2°



Test number:

GRF-XT8-FL-SQ-91A

Luminaire Model:

GRF-XT8-FL-SQ-91A

Date and time:

8/28/2018 1:23:04 PM

Description:

350mA non faceted
91A

LUM: 367

PPF: 7.49

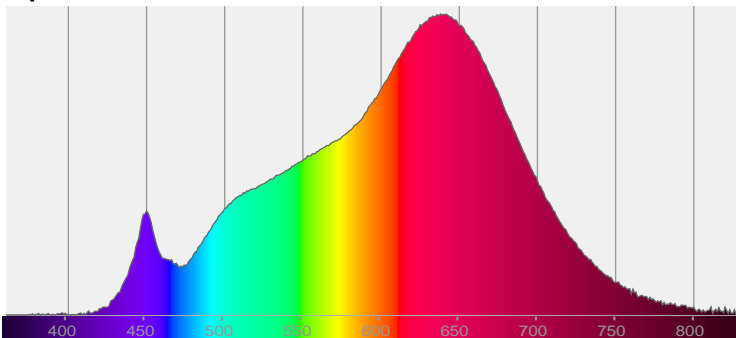


CIE 1931

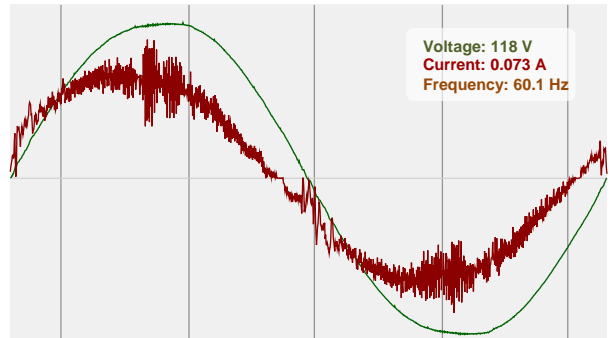
x: 0.456

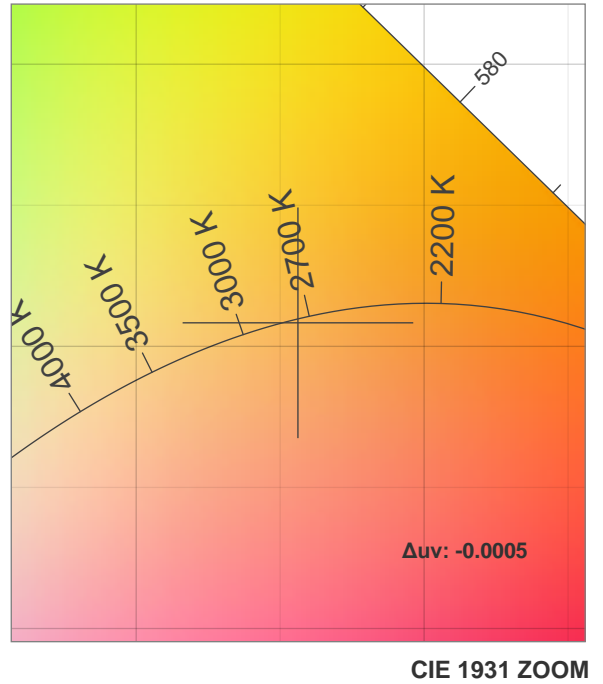
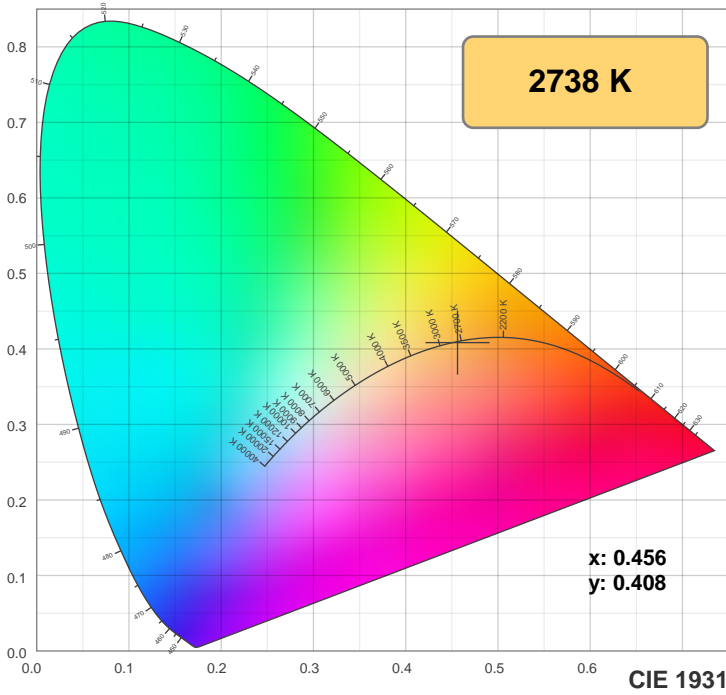
y: 0.408

Spectra

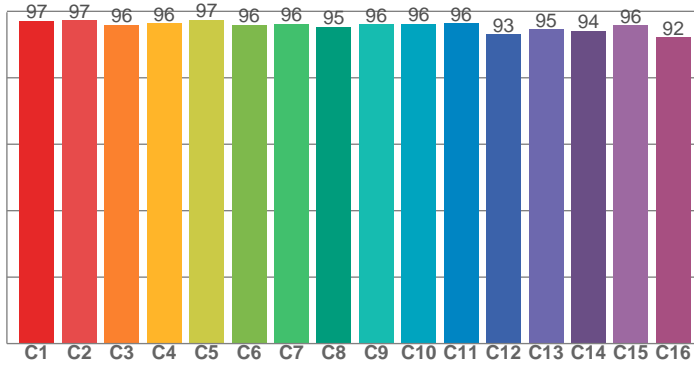


Power

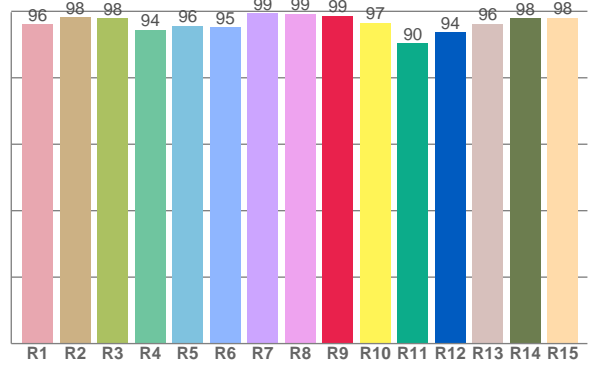




TM30: 95.8



CRI: 97.0 (R1-R8)



CRI R values, only R1-R8 are used to calculate final CRI value

R1	R2	R3	R4	R5	R6	R7	R8	R9	R10	R11	R12	R13	R14	R15
96.1	98.1	97.9	94.4	95.7	95.3	99.3	99.2	98.7	96.6	90.3	93.8	96.3	97.8	98.1

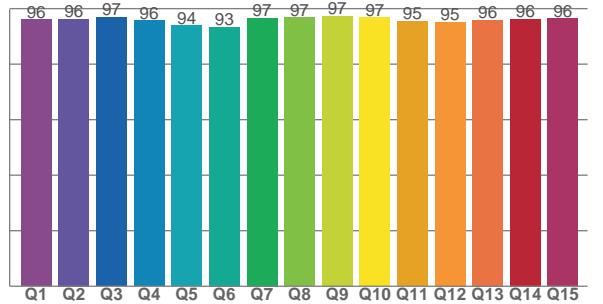
TM30 C values, 16 binned values out of total of 99 C values

C1	C2	C3	C4	C5	C6	C7	C8	C9	C10	C11	C12	C13	C14	C15	C16
97.1	97.3	96.0	96.4	97.4	96.0	96.3	95.3	96.1	96.2	96.4	93.1	94.5	94.1	95.7	92.2

CQS Q values

Q1	Q2	Q3	Q4	Q5	Q6	Q7	Q8	Q9	Q10	Q11	Q12	Q13	Q14	Q15
96.1	96.2	96.9	95.7	93.9	93.3	96.7	96.8	97.3	96.8	95.4	95.2	96.0	96.2	96.5

CQS: 95.6



Color parameters

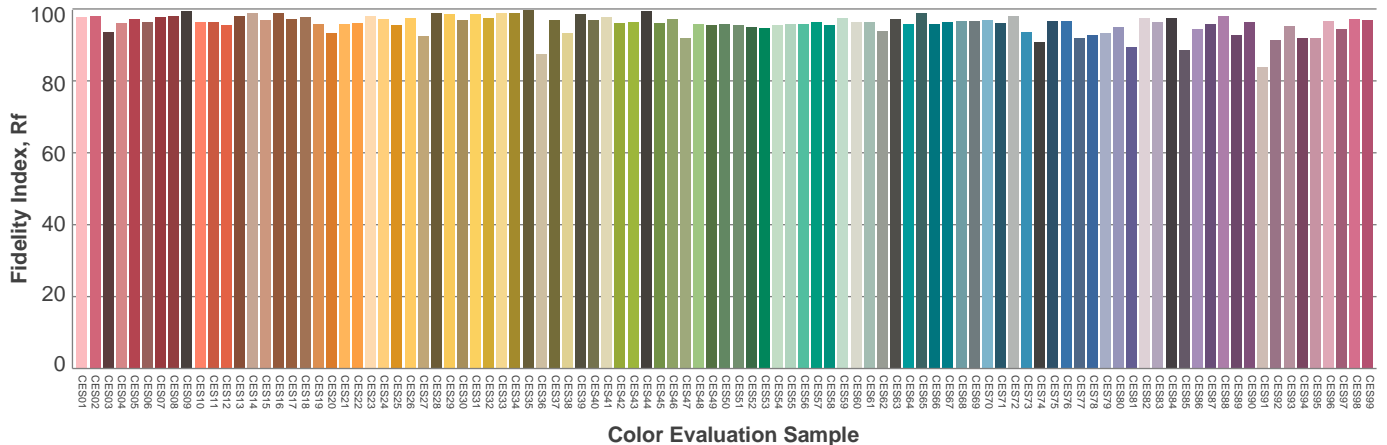
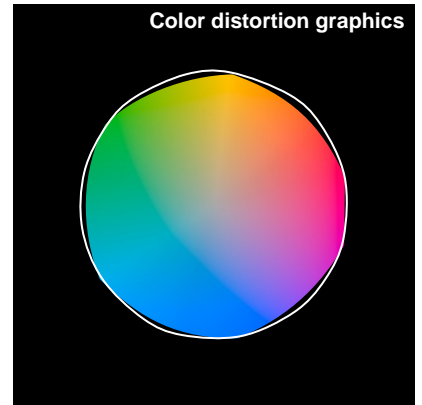
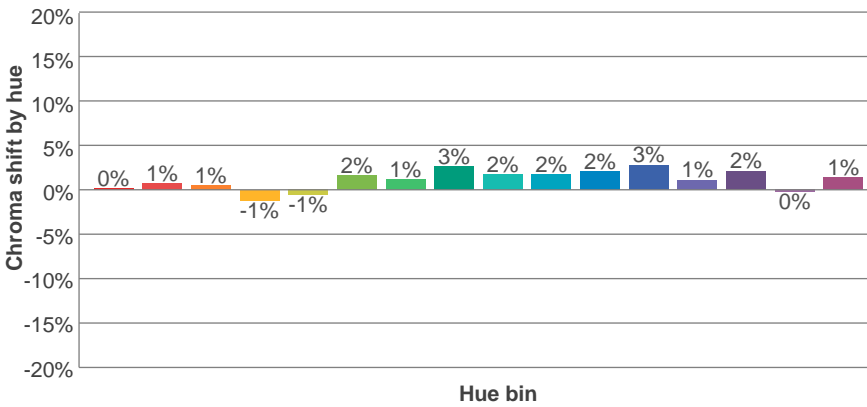
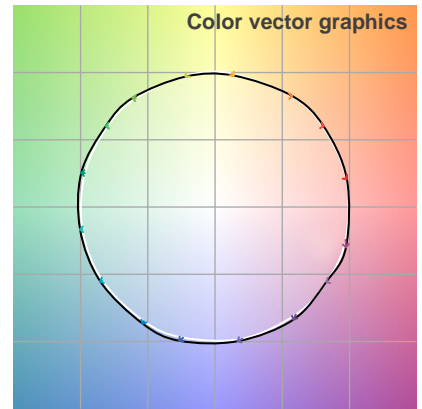
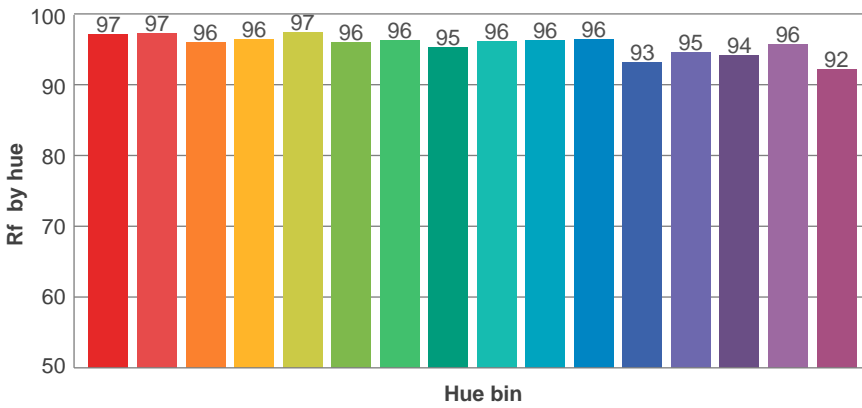
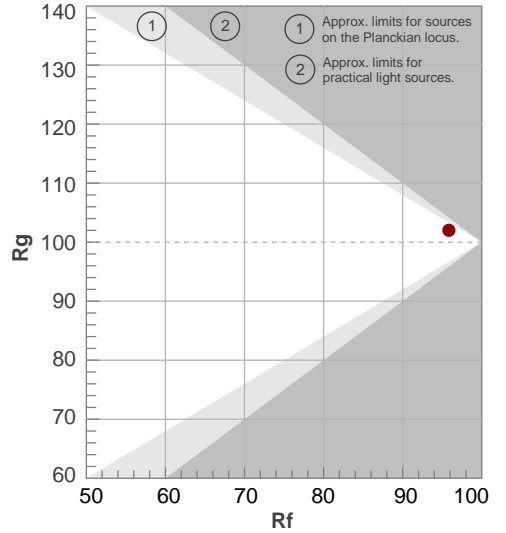
Color temperature	Color rendering index	Red component	Color fidelity	Color gamut	Color quality scale	Color coordinate cie 1931	Color coordinate cie 1931	Color coordinate	Color coordinate	Color diviation from black body
CCT	CRI	CRI R9	TM30 Rf	TM30 Rg	CQS	x	y	u	v	Δuv
2738 K	97.0	98.7	95.8	102.0	95.6	0.456	0.408	0.261	0.351	-0.0005

TM30 details

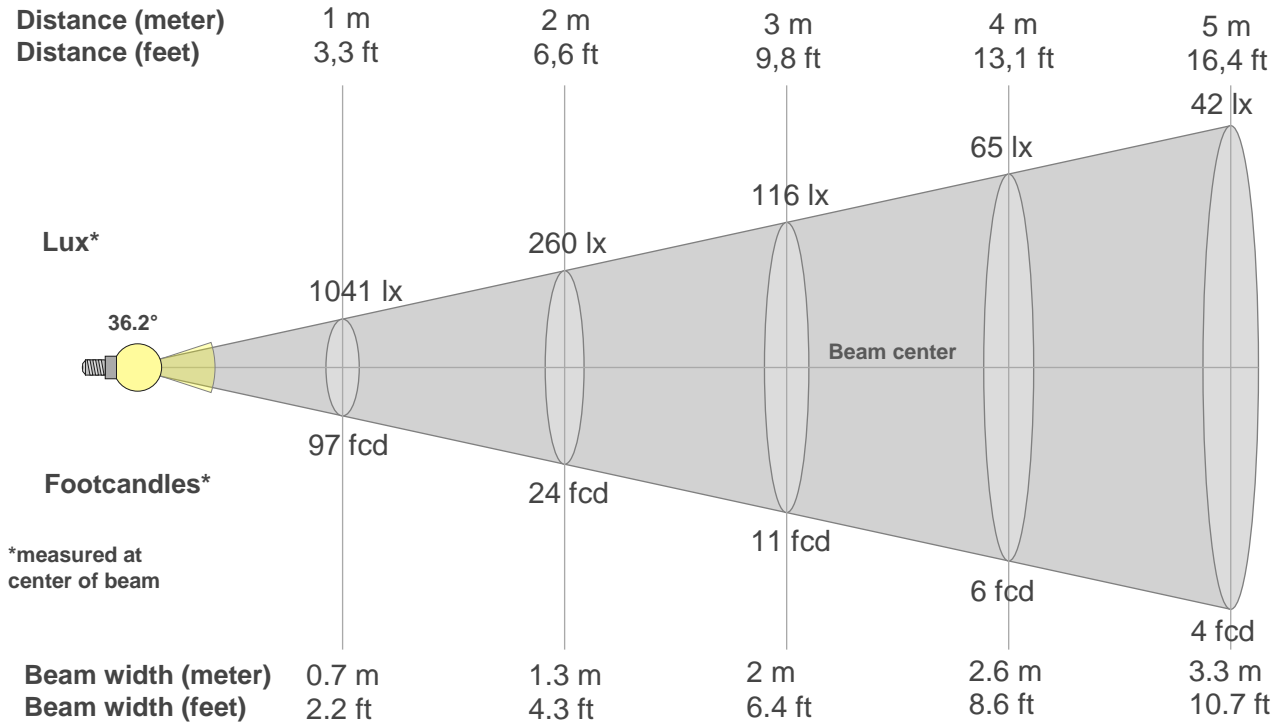
Rf 95.8
Fidelity index Rf

Rg 102.0
Gammut index Rg

Hue Bin	R _f	Graphic shifts (%)	
		Chroma	Hue
1	97	0%	0%
2	97	1%	-1%
3	96	1%	-1%
4	96	-1%	-2%
5	97	-1%	1%
6	96	2%	2%
7	96	1%	1%
8	95	3%	0%
9	96	2%	0%
10	96	2%	0%
11	96	2%	0%
12	93	3%	-2%
13	95	1%	-4%
14	94	2%	-3%
15	96	0%	0%
16	92	1%	-5%



Beam details



Beam intensities from 1-20m

1m	2m	3m	4m	5m	6m	7m	8m	9m	10m	11m	12m	13m	14m	15m	16m	17m	18m	19m	20m
3.3ft	6.6ft	9.8ft	13.1ft	16.4ft	19.7ft	23ft	26.2ft	29.5ft	32.8ft	36.1ft	39.4ft	42.7ft	45.9ft	49.2ft	52.5ft	55.8ft	59.1ft	62.3ft	65.6ft
1041lx	260lx	116lx	65lx	42lx	29lx	21lx	16lx	13lx	10lx	9lx	7lx	6lx	5lx	5lx	4lx	4lx	3lx	3lx	3lx
96.7fcd	24.2fcd	10.7fcd	6fcd	3.9fcd	2.7fcd	2fcd	1.5fcd	1.2fcd	1fcd	0.8fcd	0.7fcd	0.6fcd	0.5fcd	0.4fcd	0.4fcd	0.3fcd	0.3fcd	0.3fcd	0.2fcd

Intensities in 0° c-plane

0°	2°	4°	6°	8°	10°	12°	14°	16°	18°	20°	22°	24°	26°	28°	30°	32°	34°	36°	38°
1041	1037	1025	1002	969	923	856	768	668	527	390	269	171	100	58	34	20	12	8	6
100%	100%	98%	96%	93%	89%	82%	74%	64%	51%	37%	26%	16%	10%	6%	3%	2%	1%	1%	1%

Intensities in 90° c-plane

0°	2°	4°	6°	8°	10°	12°	14°	16°	18°	20°	22°	24°	26°	28°	30°	32°	34°	36°	38°
1041	1037	1025	1002	969	923	856	768	668	527	390	269	171	100	58	34	20	12	8	6
100%	100%	98%	96%	93%	89%	82%	74%	64%	51%	37%	26%	16%	10%	6%	3%	2%	1%	1%	1%

Intensities in 180° c-plane

0°	2°	4°	6°	8°	10°	12°	14°	16°	18°	20°	22°	24°	26°	28°	30°	32°	34°	36°	38°
1041	1037	1025	1002	969	923	856	768	668	527	390	269	171	100	58	34	20	12	8	6
100%	100%	98%	96%	93%	89%	82%	74%	64%	51%	37%	26%	16%	10%	6%	3%	2%	1%	1%	1%

Intensities in 270° c-plane

0°	2°	4°	6°	8°	10°	12°	14°	16°	18°	20°	22°	24°	26°	28°	30°	32°	34°	36°	38°
1041	1037	1025	1002	969	923	856	768	668	527	390	269	171	100	58	34	20	12	8	6
100%	100%	98%	96%	93%	89%	82%	74%	64%	51%	37%	26%	16%	10%	6%	3%	2%	1%	1%	1%

Beam angle 50%	Field angle 10%	Cutoff angle 2,5%	Intensity ratio in 120° cone	Intensity ratio in 90° cone
36.2°	51.7°	61.5°	98.7%	98.1%

THIS PAGE INTENTIONALLY LEFT BLANK