

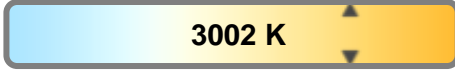
Light efficiency:



Light quality:



Color temperature:

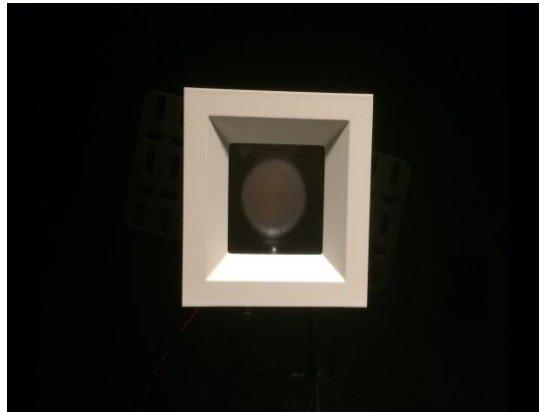


Output: 741 lm

Peak: 1596 cd

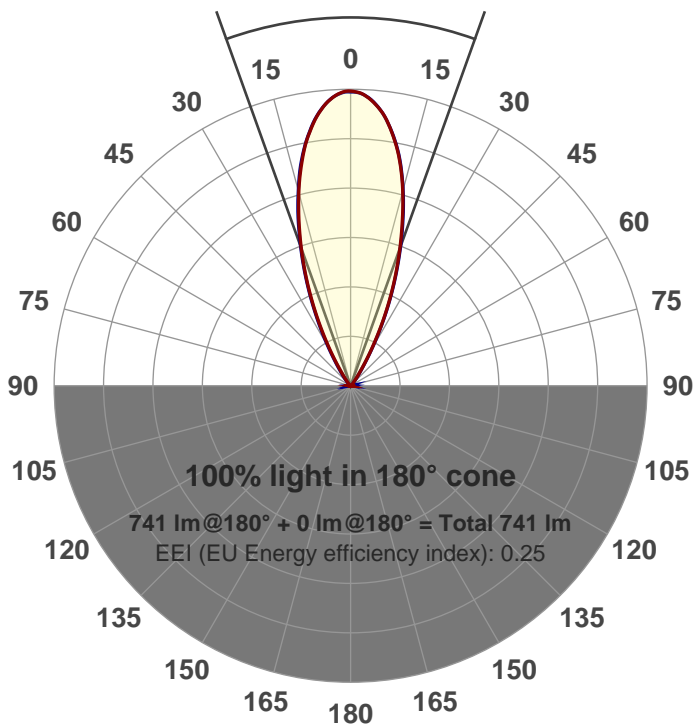
Power: 15.0 W

PF: 0.98



Beam angle

39.5°



Product name:

GRO-AD-FL-SQ-91A

Item number:

GRO-AD-FL-SQ-91A

Date and time:

5/4/2017 4:05:05 PM

Description:

LUM: 741

PPF: 12.5

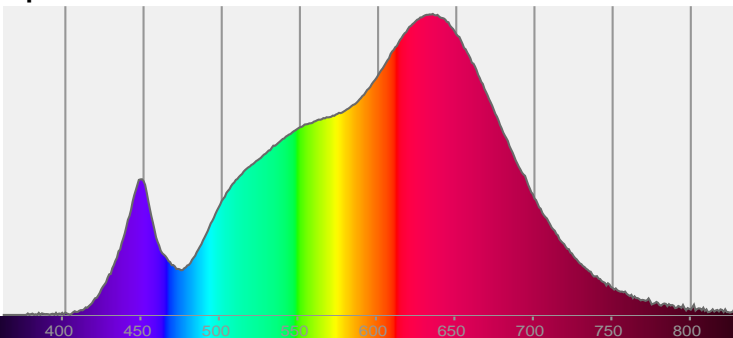


CIE 1931

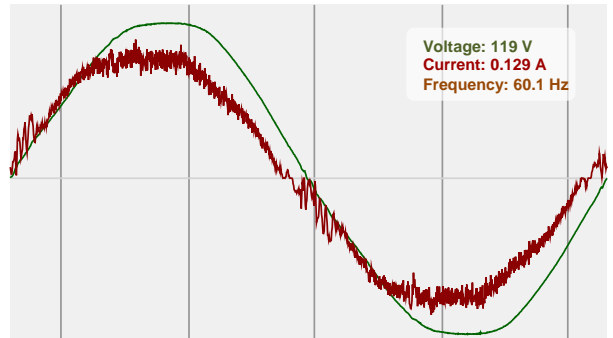
x: 0.437

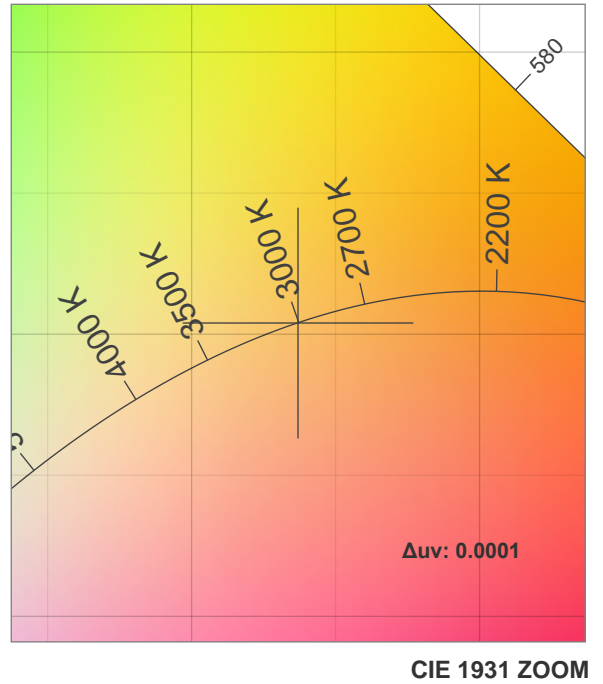
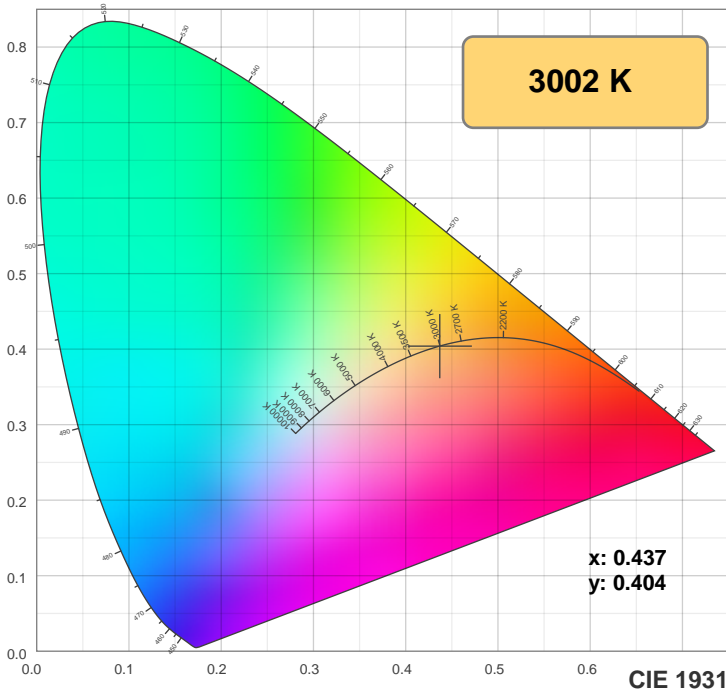
y: 0.404

Spectra

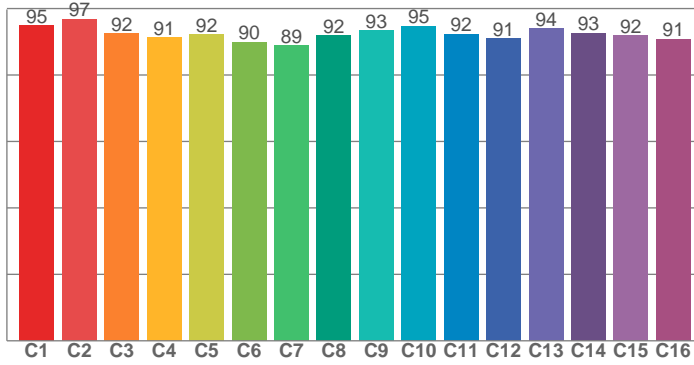


Power

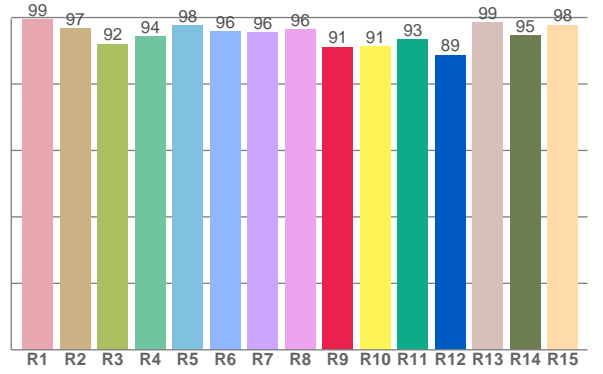




TM30: 92.8



CRI: 96.0 (R1-R8)



CRI R values, only R1-R8 are used to calculate final CRI value

R1	R2	R3	R4	R5	R6	R7	R8	R9	R10	R11	R12	R13	R14	R15
99.4	96.8	92.1	94.4	97.7	96.0	95.6	96.4	91.2	91.3	93.4	88.8	98.7	94.6	97.8

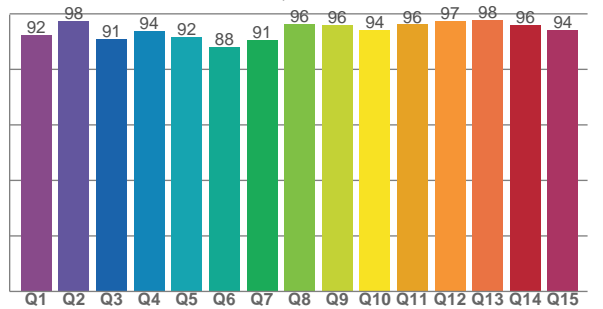
TM30 C values, 16 binned values out of total of 99 C values

C1	C2	C3	C4	C5	C6	C7	C8	C9	C10	C11	C12	C13	C14	C15	C16
94.8	96.9	92.4	91.2	92.2	90.0	89.0	92.0	93.5	94.7	92.4	91.0	94.0	92.7	91.9	90.9

CQS Q values

Q1	Q2	Q3	Q4	Q5	Q6	Q7	Q8	Q9	Q10	Q11	Q12	Q13	Q14	Q15
92.4	97.5	91.1	93.9	91.7	88.0	90.7	96.3	95.9	94.2	96.2	97.5	97.8	95.9	94.2

CQS: 93.4



Color parameters

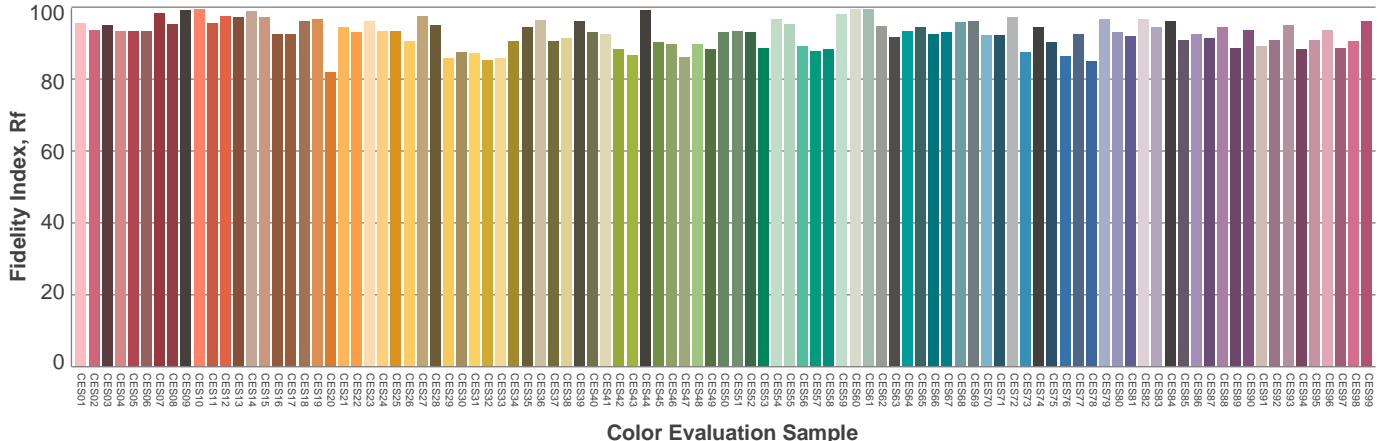
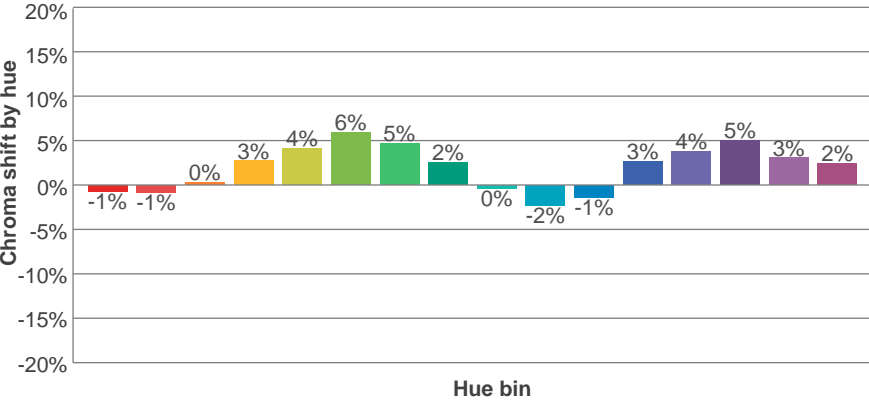
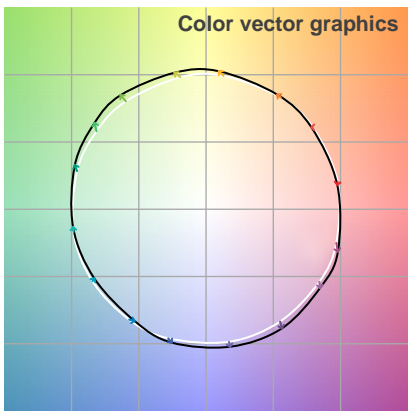
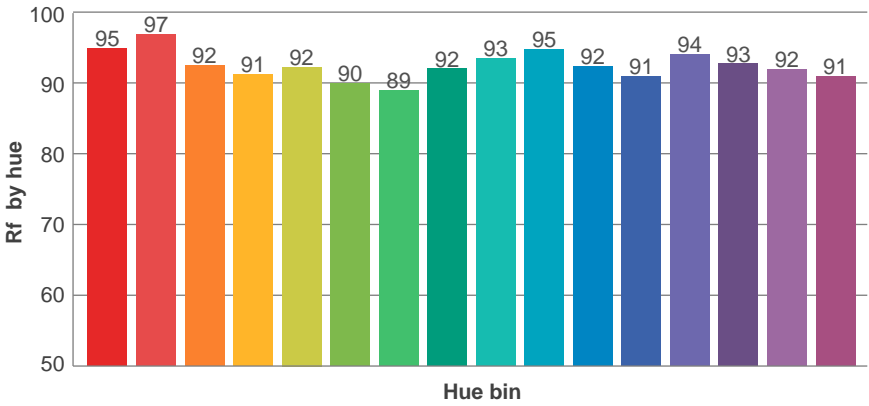
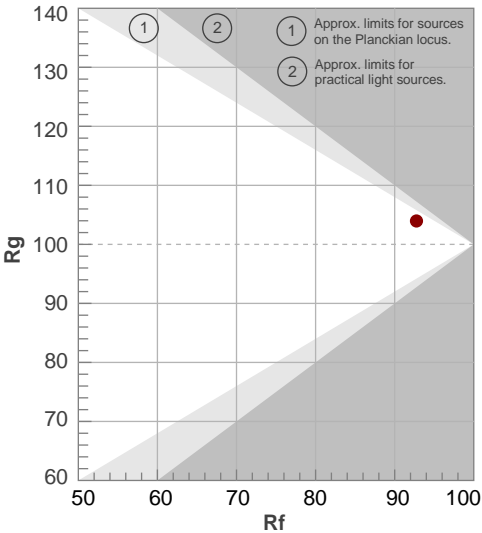
Color temperature	Color rendering index	Red component	Color fidelity	Color gamut	Color quality scale	Color coordinate cie 1931	Color coordinate cie 1931	Color coordinate	Color coordinate	Color deviation from black body
CCT	CRI	CRI R9	TM30 Rf	TM30 Rg	CQS	x	y	u	v	Δuv
3002 K	96.0	91.2	92.8	104.0	93.4	0.437	0.404	0.251	0.348	0.0001

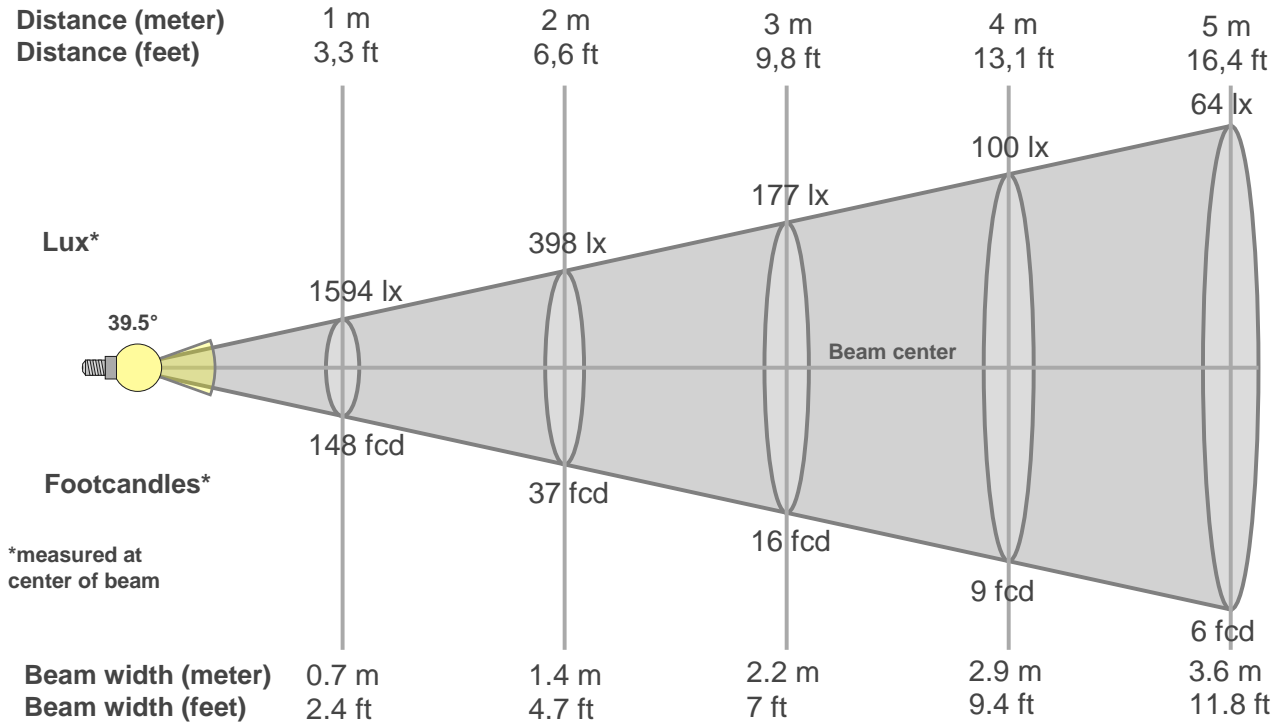
TM30 details

Rf 92.8
Fidelity index Rf

Rg 104.0
Gammut index Rg

Hue Bin	R _f	Graphic shifts (%)	
		Chroma	Hue
1	95	-1%	-2%
2	97	-1%	1%
3	92	0%	3%
4	91	3%	4%
5	92	4%	4%
6	90	6%	1%
7	89	5%	-4%
8	92	2%	-4%
9	93	0%	-4%
10	95	-2%	-1%
11	92	-1%	4%
12	91	3%	3%
13	94	4%	0%
14	93	5%	-2%
15	92	3%	-3%
16	91	2%	-6%





Beam intensities from 1-20m

1m	2m	3m	4m	5m	6m	7m	8m	9m	10m	11m	12m	13m	14m	15m	16m	17m	18m	19m	20m
3.3ft	6.6ft	9.8ft	13.1ft	16.4ft	19.7ft	23ft	26.2ft	29.5ft	32.8ft	36.1ft	39.4ft	42.7ft	45.9ft	49.2ft	52.5ft	55.8ft	59.1ft	62.3ft	65.6ft
1594lx	398lx	177lx	100lx	64lx	44lx	33lx	25lx	20lx	16lx	13lx	11lx	9lx	8lx	7lx	6lx	6lx	5lx	4lx	4lx
148.1fc	37fcd	16.5fcd	9.3fcd	5.9fcd	4.1fcd	3fcd	2.3fcd	1.8fcd	1.5fcd	1.2fcd	1fcd	0.9fcd	0.8fcd	0.7fcd	0.6fcd	0.5fcd	0.5fcd	0.4fcd	0.4fcd

Intensities in 0° c-plane

0°	2°	4°	6°	8°	10°	12°	14°	16°	18°	20°	22°	24°	26°	28°	30°	32°	34°	36°	38°
1594	1587	1556	1506	1439	1357	1256	1144	1022	898	775	652	531	416	308	217	145	94	62	41
100%	100%	98%	94%	90%	85%	79%	72%	64%	56%	49%	41%	33%	26%	19%	14%	9%	6%	4%	3%

Intensities in 90° c-plane

0°	2°	4°	6°	8°	10°	12°	14°	16°	18°	20°	22°	24°	26°	28°	30°	32°	34°	36°	38°
1594	1585	1557	1508	1442	1359	1264	1154	1035	911	785	663	544	432	331	241	169	117	83	59
100%	99%	98%	95%	90%	85%	79%	72%	65%	57%	49%	42%	34%	27%	21%	15%	11%	7%	5%	4%

Intensities in 180° c-plane

0°	2°	4°	6°	8°	10°	12°	14°	16°	18°	20°	22°	24°	26°	28°	30°	32°	34°	36°	38°
1594	1586	1554	1506	1441	1358	1263	1152	1028	900	775	653	534	420	313	220	147	95	62	42
100%	100%	97%	95%	90%	85%	79%	72%	65%	56%	49%	41%	34%	26%	20%	14%	9%	6%	4%	3%

Intensities in 270° c-plane

0°	2°	4°	6°	8°	10°	12°	14°	16°	18°	20°	22°	24°	26°	28°	30°	32°	34°	36°	38°
1594	1584	1556	1507	1441	1361	1268	1157	1037	911	785	662	543	428	322	228	154	103	70	48
100%	99%	98%	95%	90%	85%	80%	73%	65%	57%	49%	42%	34%	27%	20%	14%	10%	6%	4%	3%

Beam angle 50%	Field angle 10%	Cutoff angle 2,5%	Intensity ratio in 120° cone	Intensity ratio in 90° cone
39.5°	63.6°	77.9°	1.0%	1.0%

