

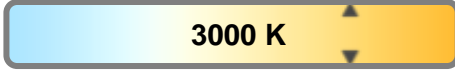
Light efficiency:



Light quality:



Color temperature:

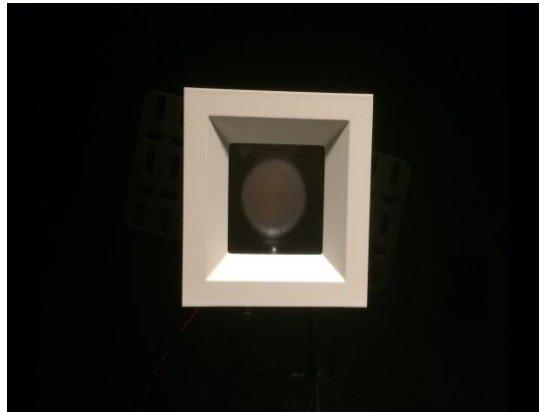


Output: 741 lm

Peak: 2555 cd

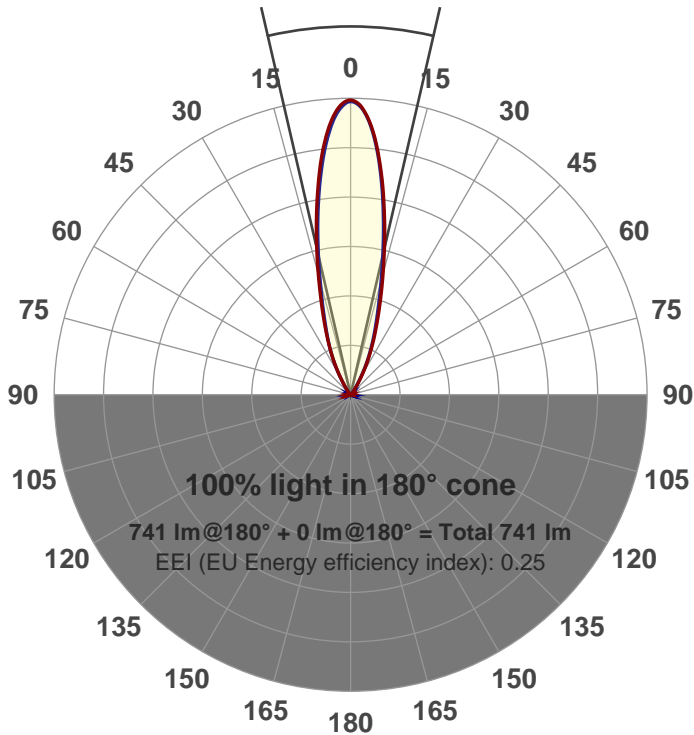
Power: 15.1 W

PF: 0.98



Beam angle

26°



Product name:
GRO-AD-NF-SQ-91A

Item number:
GRO-AD-NF-SQ-91A

Date and time:
5/4/2017 3:48:44 PM

Description:

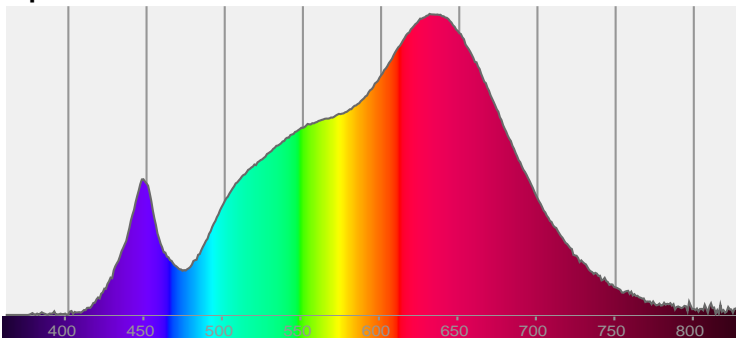
LUM: 741

PPF: 12.5

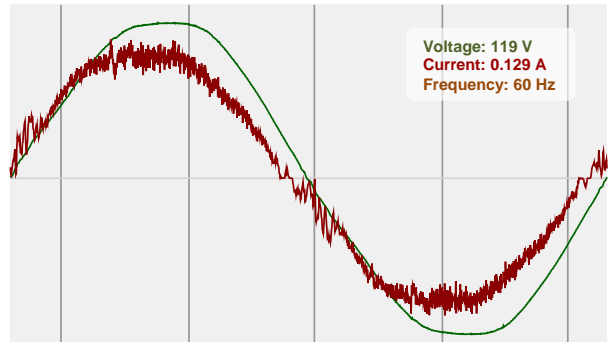


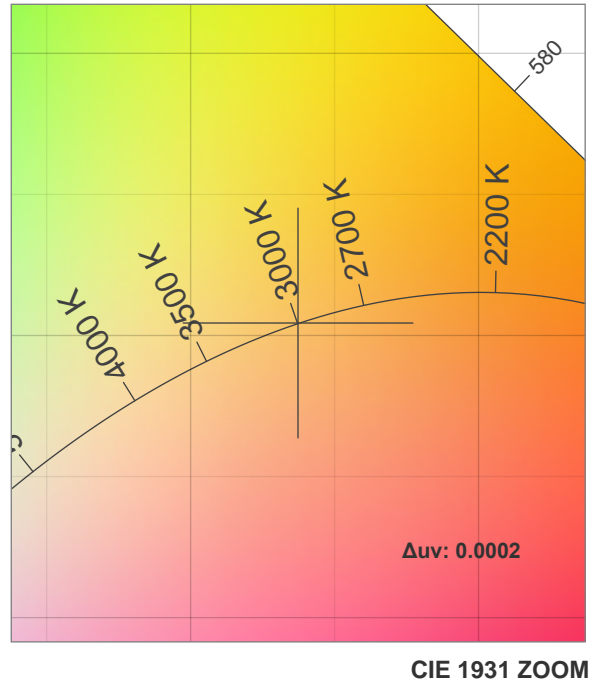
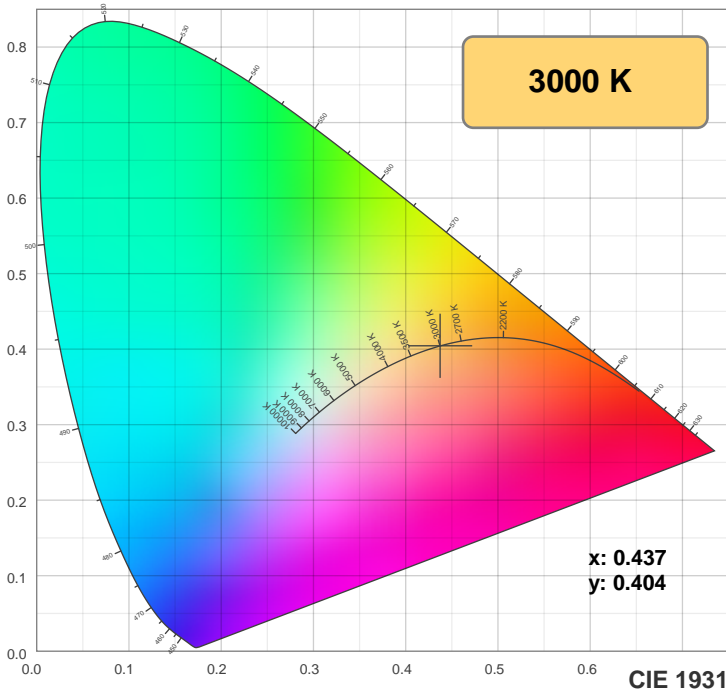
CIE 1931
x: 0.437
y: 0.404

Spectra

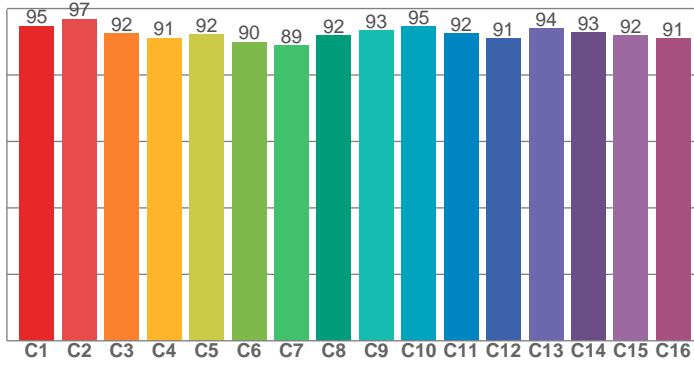


Power

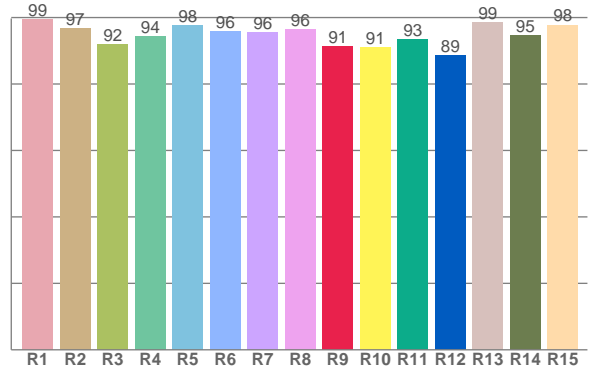




TM30: 92.7



CRI: 96.0 (R1-R8)



CRI R values, only R1-R8 are used to calculate final CRI value

R1	R2	R3	R4	R5	R6	R7	R8	R9	R10	R11	R12	R13	R14	R15
99.4	96.8	91.9	94.3	97.7	95.9	95.6	96.4	91.3	91.1	93.3	88.7	98.6	94.6	97.8

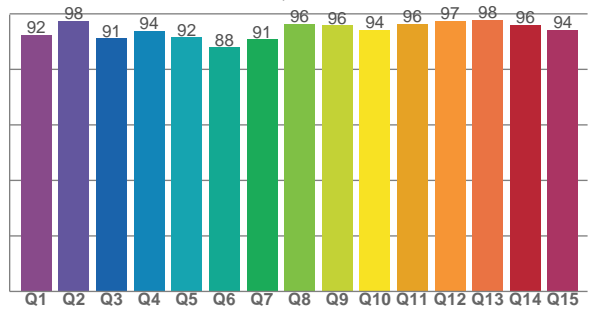
TM30 C values, 16 binned values out of total of 99 C values

C1	C2	C3	C4	C5	C6	C7	C8	C9	C10	C11	C12	C13	C14	C15	C16
94.8	96.9	92.5	91.1	92.2	89.9	88.8	91.9	93.3	94.6	92.4	91.0	94.1	92.8	92.0	91.0

CQS Q values

Q1	Q2	Q3	Q4	Q5	Q6	Q7	Q8	Q9	Q10	Q11	Q12	Q13	Q14	Q15
92.4	97.5	91.2	93.9	91.5	87.9	90.8	96.4	95.8	94.2	96.3	97.4	97.7	95.9	94.2

CQS: 93.3



Color parameters

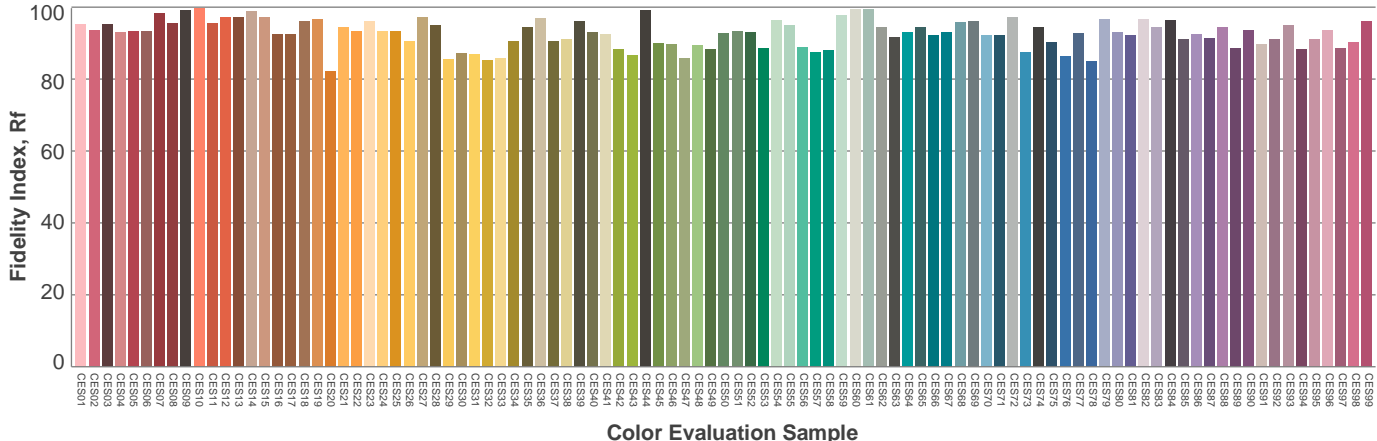
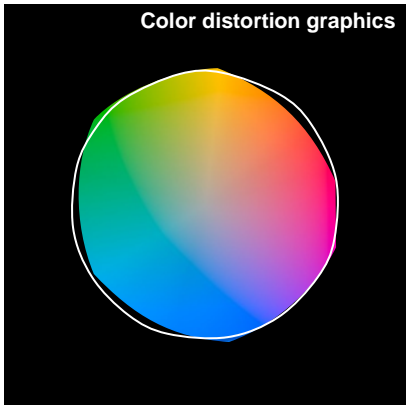
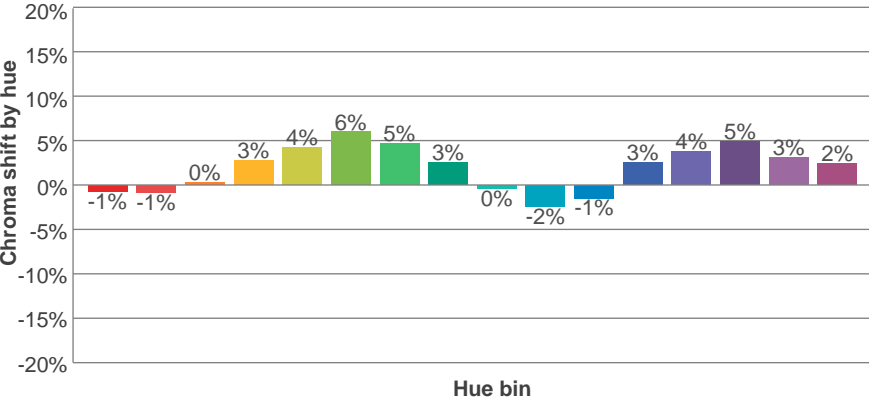
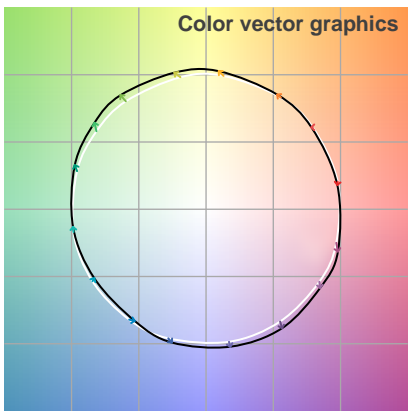
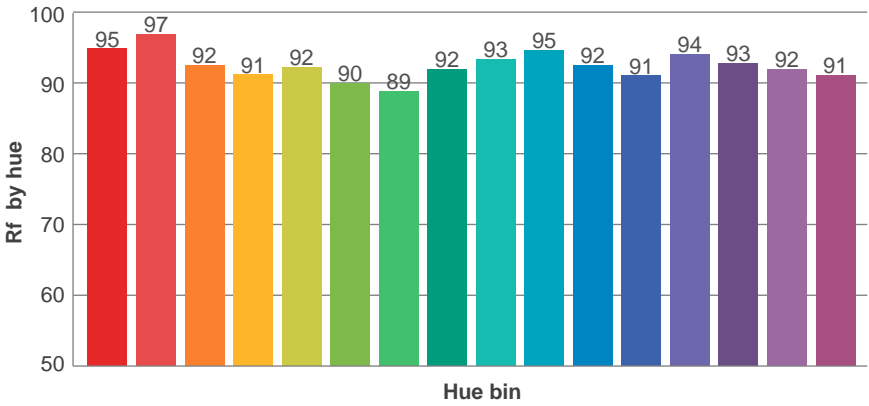
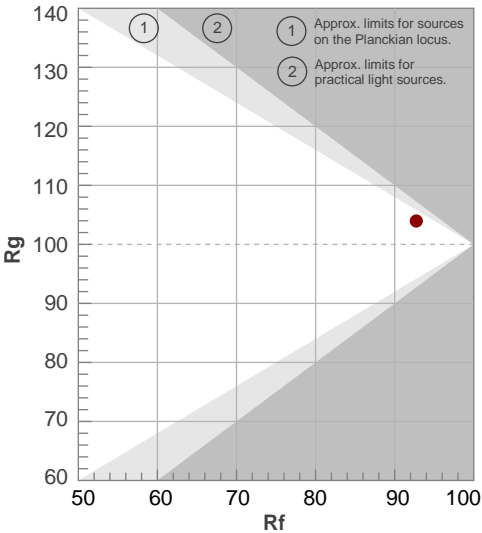
Color temperature	Color rendering index	Red component	Color fidelity	Color gamut	Color quality scale	Color coordinate cie 1931	Color coordinate cie 1931	Color coordinate	Color coordinate	Color deviation from black body
CCT	CRI	CRI R9	TM30 Rf	TM30 Rg	CQS	x	y	u	v	Δuv
3000 K	96.0	91.3	92.7	104.0	93.3	0.437	0.404	0.251	0.348	0.0002

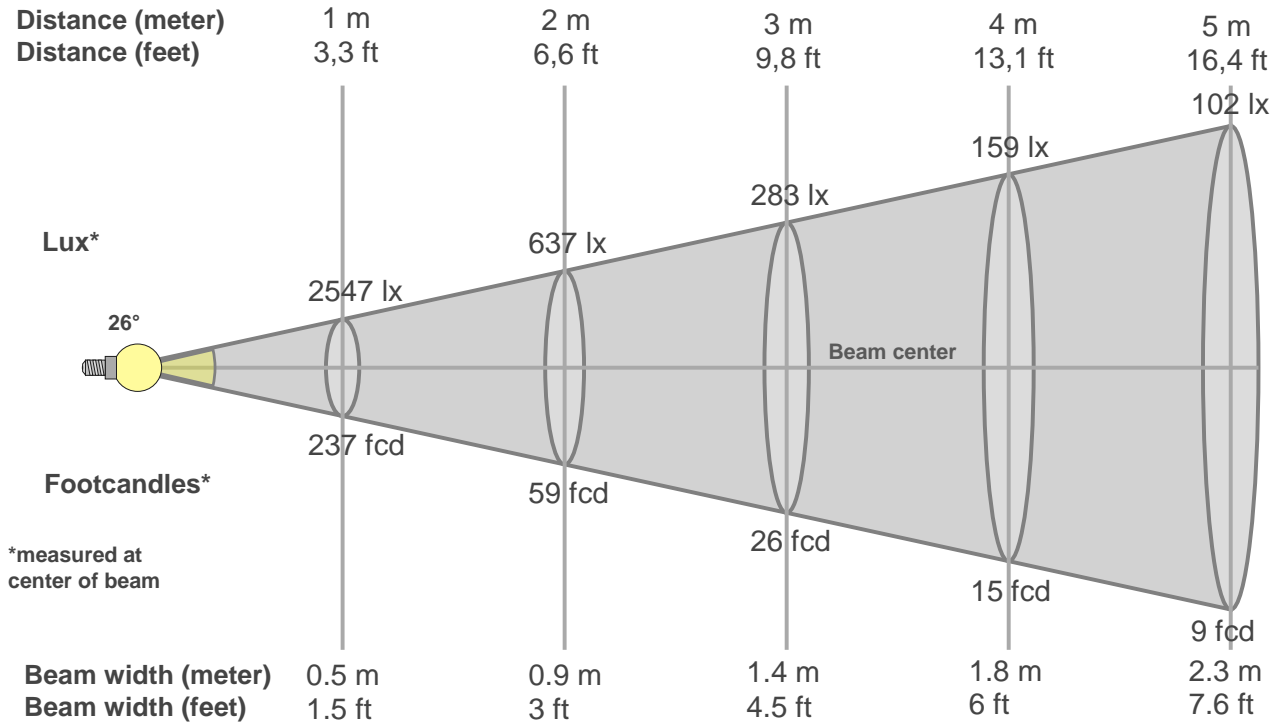
TM30 details

Rf 92.7
Fidelity index Rf

Rg 104.0
Gammut index Rg

Hue Bin	R _f	Graphic shifts (%)	
		Chroma	Hue
1	95	-1%	-2%
2	97	-1%	1%
3	92	0%	3%
4	91	3%	4%
5	92	4%	4%
6	90	6%	1%
7	89	5%	-4%
8	92	3%	-4%
9	93	0%	-4%
10	95	-2%	-1%
11	92	-1%	4%
12	91	3%	3%
13	94	4%	0%
14	93	5%	-2%
15	92	3%	-3%
16	91	2%	-6%





Beam intensities from 1-20m

1m	2m	3m	4m	5m	6m	7m	8m	9m	10m	11m	12m	13m	14m	15m	16m	17m	18m	19m	20m
3.3ft	6.6ft	9.8ft	13.1ft	16.4ft	19.7ft	23ft	26.2ft	29.5ft	32.8ft	36.1ft	39.4ft	42.7ft	45.9ft	49.2ft	52.5ft	55.8ft	59.1ft	62.3ft	65.6ft
2547lx	637lx	283lx	159lx	102lx	71lx	52lx	40lx	31lx	25lx	21lx	18lx	15lx	13lx	11lx	10lx	9lx	8lx	7lx	6lx
236.6fcd	59.2fcd	26.3fcd	14.8fcd	9.5fcd	6.6fcd	4.8fcd	3.7fcd	2.9fcd	2.4fcd	2fcd	1.6fcd	1.4fcd	1.2fcd	1.1fcd	0.9fcd	0.8fcd	0.7fcd	0.7fcd	0.6fcd

Intensities in 0° c-plane

0°	2°	4°	6°	8°	10°	12°	14°	16°	18°	20°	22°	24°	26°	28°	30°	32°	34°	36°	38°
2547	2511	2384	2188	1946	1683	1427	1191	982	809	665	546	442	349	264	188	127	86	58	41
100%	99%	94%	86%	76%	66%	56%	47%	39%	32%	26%	21%	17%	14%	10%	7%	5%	3%	2%	2%

Intensities in 90° c-plane

0°	2°	4°	6°	8°	10°	12°	14°	16°	18°	20°	22°	24°	26°	28°	30°	32°	34°	36°	38°
2547	2485	2346	2137	1887	1624	1364	1125	924	763	633	528	435	348	265	190	128	84	56	37
100%	98%	92%	84%	74%	64%	54%	44%	36%	30%	25%	21%	17%	14%	10%	7%	5%	3%	2%	1%

Intensities in 180° c-plane

0°	2°	4°	6°	8°	10°	12°	14°	16°	18°	20°	22°	24°	26°	28°	30°	32°	34°	36°	38°
2547	2507	2371	2169	1926	1669	1424	1192	992	820	678	557	452	359	276	203	143	100	71	50
100%	98%	93%	85%	76%	66%	56%	47%	39%	32%	27%	22%	18%	14%	11%	8%	6%	4%	3%	2%

Intensities in 270° c-plane

0°	2°	4°	6°	8°	10°	12°	14°	16°	18°	20°	22°	24°	26°	28°	30°	32°	34°	36°	38°
2547	2494	2360	2152	1898	1627	1364	1127	927	763	633	523	426	335	249	174	116	76	51	34
100%	98%	93%	84%	75%	64%	54%	44%	36%	30%	25%	21%	17%	13%	10%	7%	5%	3%	2%	1%

Beam angle 50%	Field angle 10%	Cutoff angle 2,5%	Intensity ratio in 120° cone	Intensity ratio in 90° cone
26°	56.5°	71.2°	1.0%	1.0%

