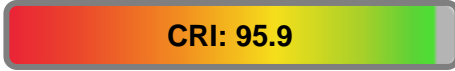


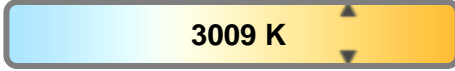
Light efficiency:



Light quality:



Color temperature:

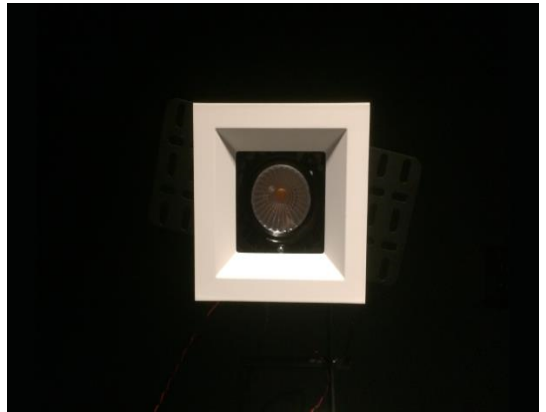


Output: 779 lm

Peak: 3270 cd

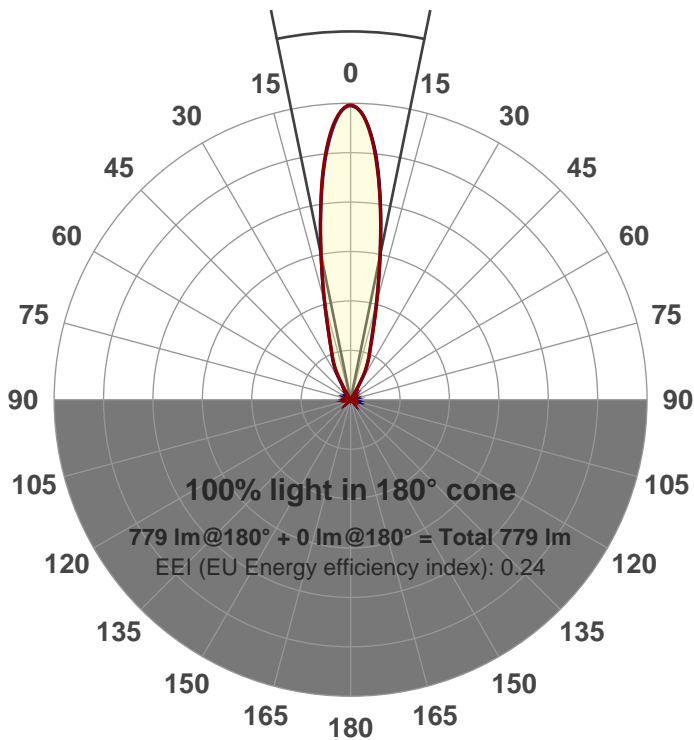
Power: 15.2 W

PF: 0.98



Beam angle

23.1°



Product name:
GRO-AD-NF-SQ
Item number:
GRO-AD-NF-SQ
Date and time:
5/4/2017 3:44:59 PM
Description:

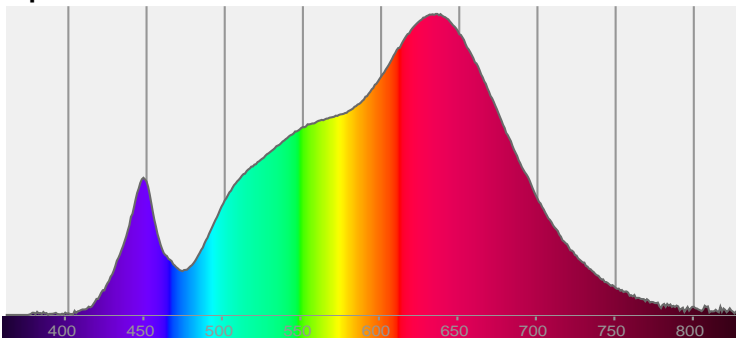
LUM: 779

PPF: 13.2

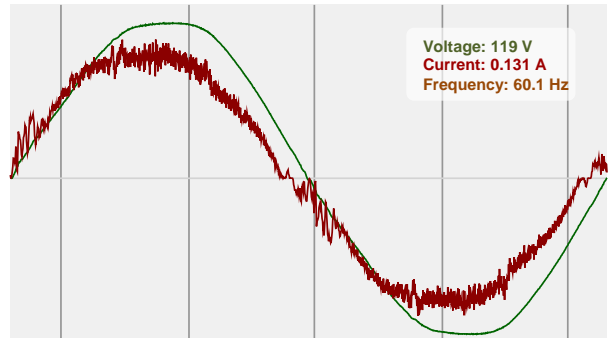


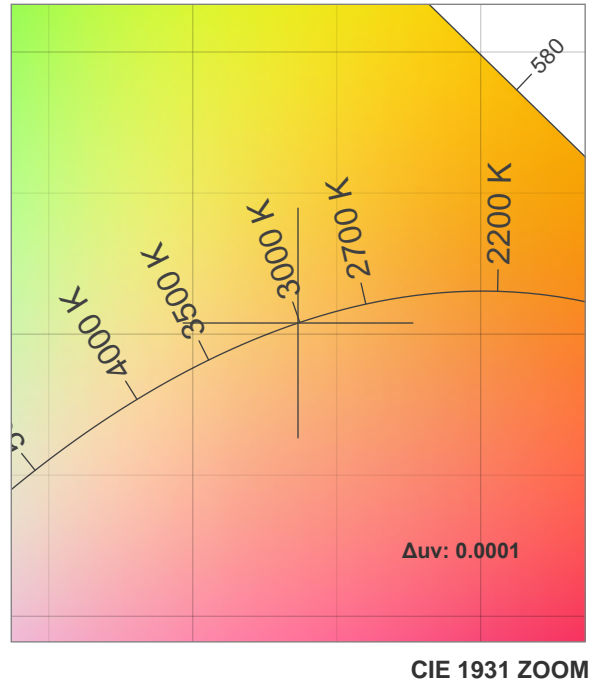
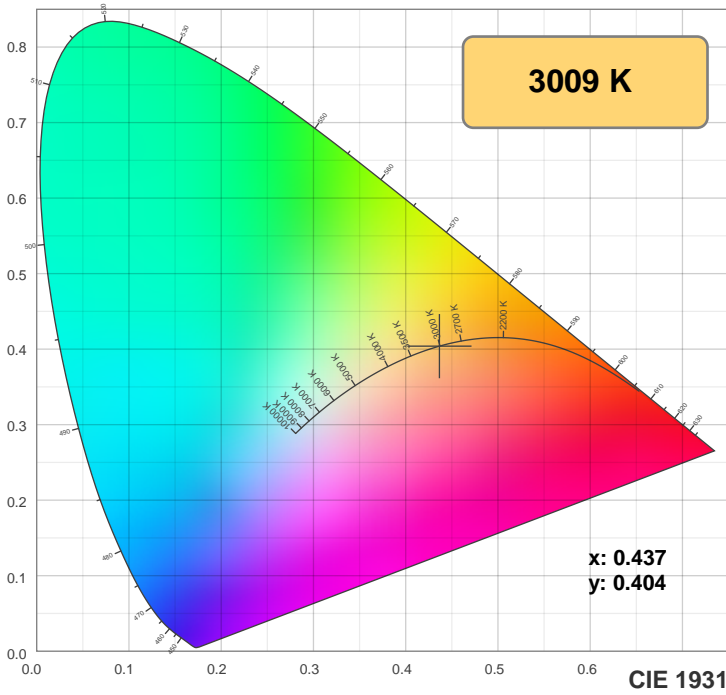
CIE 1931
x: 0.437
y: 0.404

Spectra

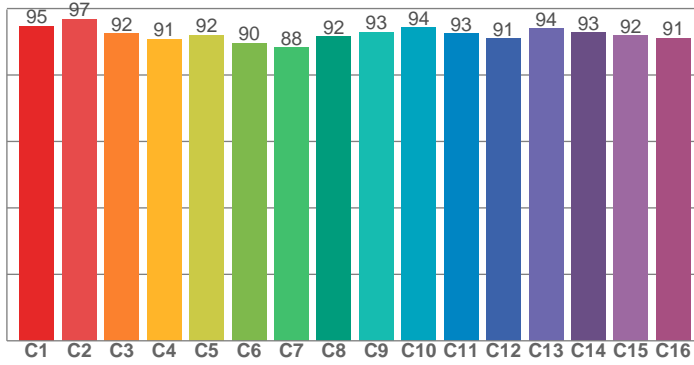


Power

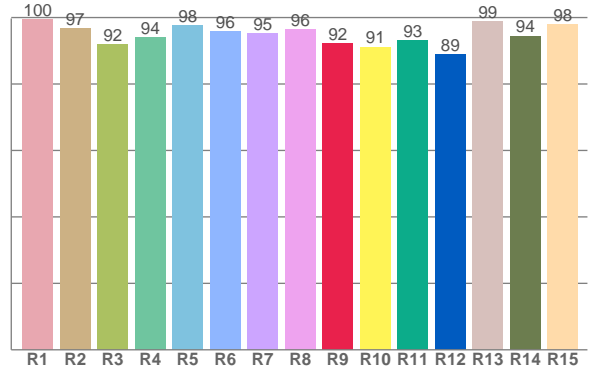




TM30: 92.6



CRI: 95.9 (R1-R8)



CRI R values, only R1-R8 are used to calculate final CRI value

R1	R2	R3	R4	R5	R6	R7	R8	R9	R10	R11	R12	R13	R14	R15
99.5	96.8	91.8	94.0	97.7	95.9	95.4	96.5	92.1	91.2	93.0	88.9	98.7	94.5	97.9

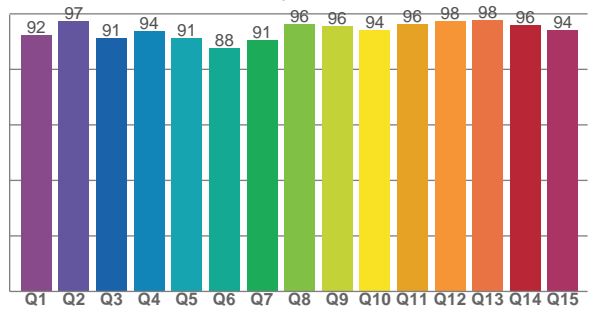
TM30 C values, 16 binned values out of total of 99 C values

C1	C2	C3	C4	C5	C6	C7	C8	C9	C10	C11	C12	C13	C14	C15	C16
94.7	96.8	92.4	90.8	92.0	89.6	88.3	91.6	93.0	94.4	92.5	90.9	94.0	92.8	91.9	91.1

CQS Q values

Q1	Q2	Q3	Q4	Q5	Q6	Q7	Q8	Q9	Q10	Q11	Q12	Q13	Q14	Q15
92.3	97.5	91.2	93.9	91.3	87.6	90.7	96.4	95.8	94.2	96.3	97.5	97.7	96.1	94.2

CQS: 93.3



Color parameters

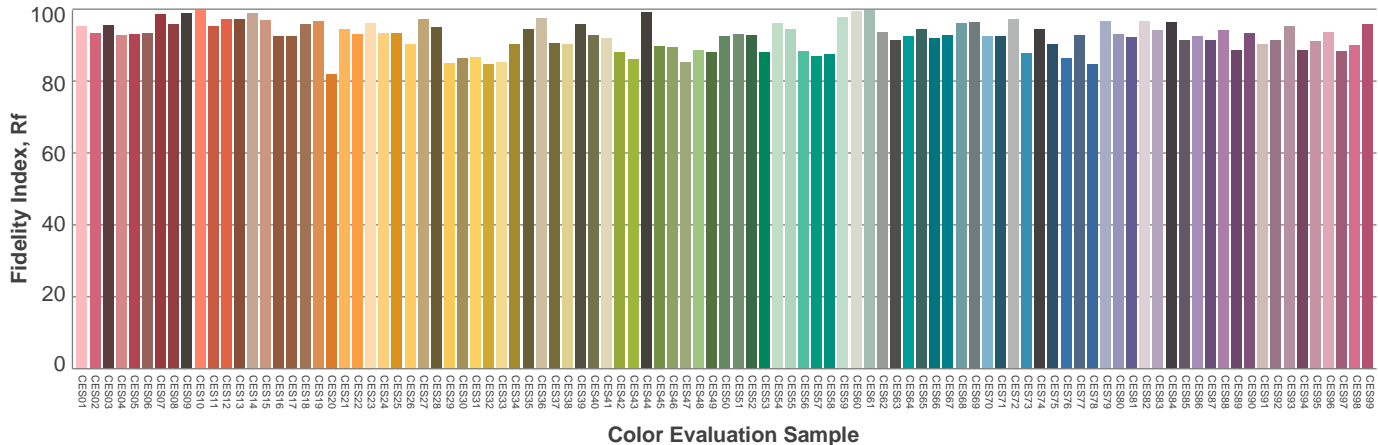
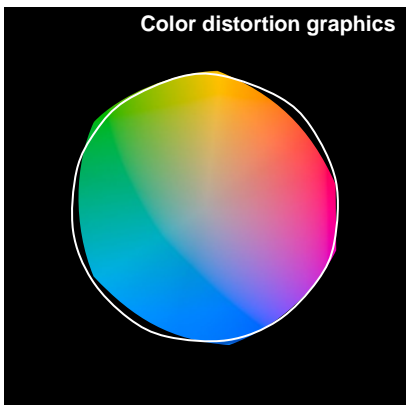
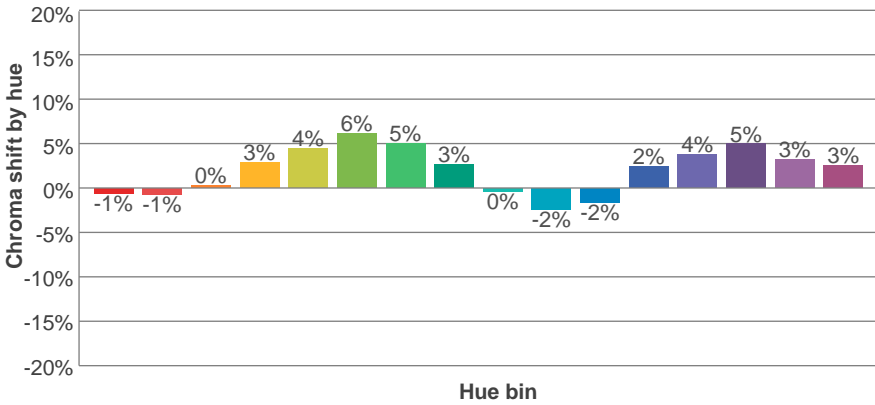
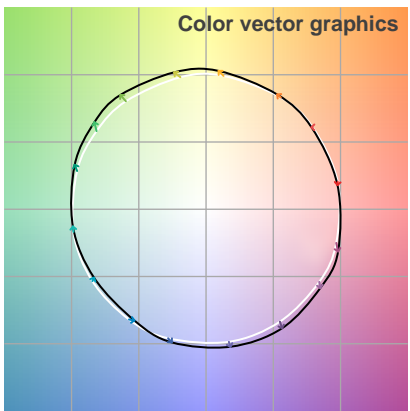
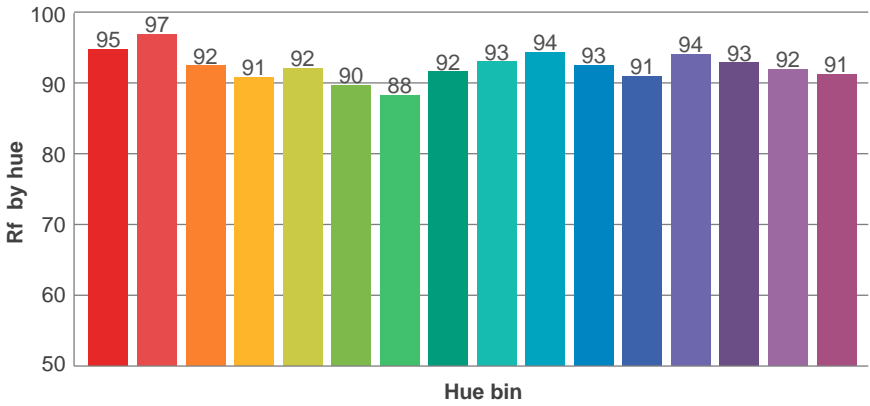
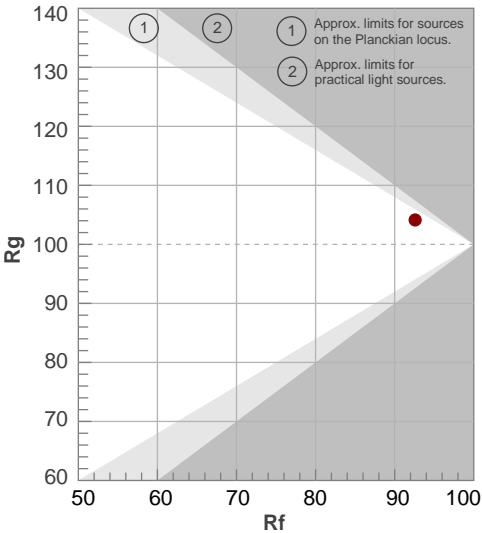
Color temperature	Color rendering index	Red component	Color fidelity	Color gamut	Color quality scale	Color coordinate cie 1931	Color coordinate cie 1931	Color coordinate	Color coordinate	Color deviation from black body
CCT	CRI	CRI R9	TM30 Rf	TM30 Rg	CQS	x	y	u	v	Δuv
3009 K	95.9	92.1	92.6	104.1	93.3	0.437	0.404	0.250	0.348	0.0001

TM30 details

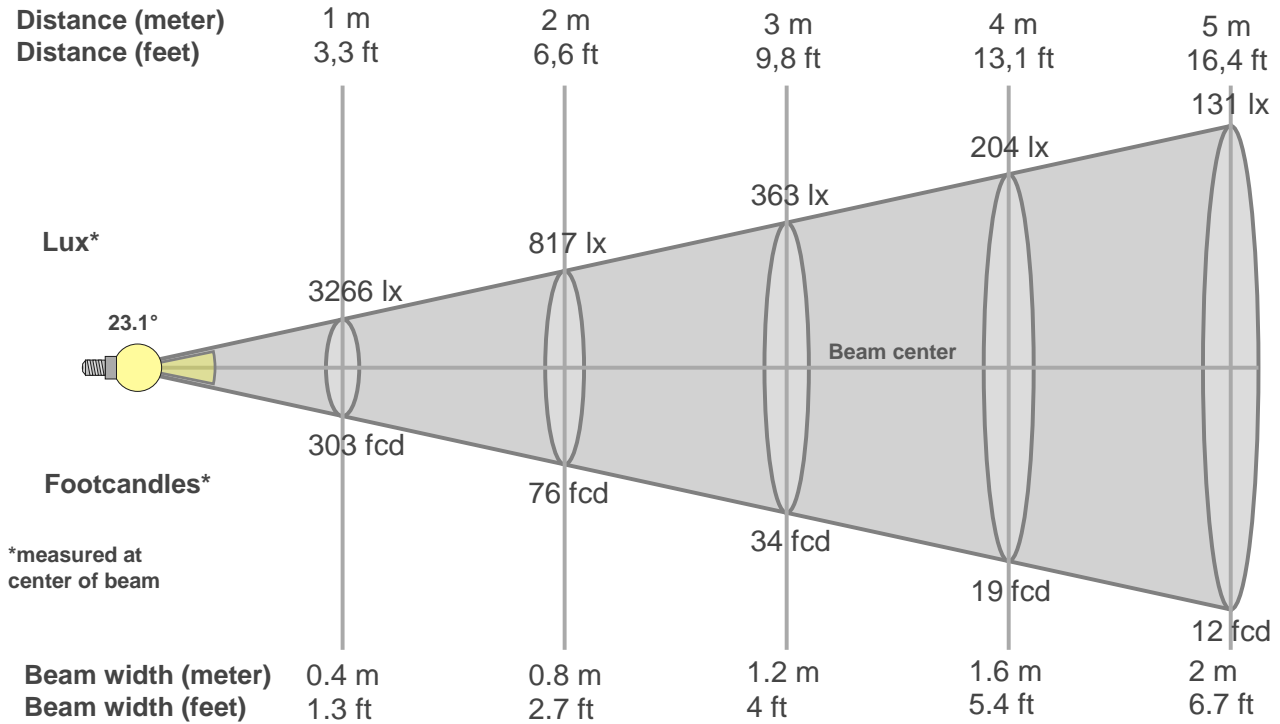
Rf 92.6
Fidelity index Rf

Rg 104.1
Gammut index Rg

Hue Bin	R _f	Graphic shifts (%)	
		Chroma	Hue
1	95	-1%	-2%
2	97	-1%	1%
3	92	0%	3%
4	91	3%	4%
5	92	4%	4%
6	90	6%	1%
7	88	5%	-5%
8	92	3%	-4%
9	93	0%	-4%
10	94	-2%	-1%
11	93	-2%	4%
12	91	2%	3%
13	94	4%	0%
14	93	5%	-1%
15	92	3%	-3%
16	91	3%	-6%



Beam details



Beam intensities from 1-20m

1m	2m	3m	4m	5m	6m	7m	8m	9m	10m	11m	12m	13m	14m	15m	16m	17m	18m	19m	20m
3.3ft	6.6ft	9.8ft	13.1ft	16.4ft	19.7ft	23ft	26.2ft	29.5ft	32.8ft	36.1ft	39.4ft	42.7ft	45.9ft	49.2ft	52.5ft	55.8ft	59.1ft	62.3ft	65.6ft
3266lx	817lx	363lx	204lx	131lx	91lx	67lx	51lx	40lx	33lx	27lx	23lx	19lx	17lx	15lx	13lx	11lx	10lx	9lx	8lx
303.4fcd	75.9fcd	33.7fcd	19fcd	12.1fcd	8.4fcd	6.2fcd	4.7fcd	3.7fcd	3fcd	2.5fcd	2.1fcd	1.8fcd	1.5fcd	1.3fcd	1.2fcd	1fcd	0.9fcd	0.8fcd	0.8fcd

Intensities in 0° c-plane

0°	2°	4°	6°	8°	10°	12°	14°	16°	18°	20°	22°	24°	26°	28°	30°	32°	34°	36°	38°
3266	3200	3010	2711	2335	1926	1560	1247	987	795	655	555	476	386	262	145	36	23	18	15
100%	98%	92%	83%	71%	59%	48%	38%	30%	24%	20%	17%	15%	12%	8%	4%	1%	1%	1%	0%

Intensities in 90° c-plane

0°	2°	4°	6°	8°	10°	12°	14°	16°	18°	20°	22°	24°	26°	28°	30°	32°	34°	36°	38°
3266	3192	2985	2688	2313	1926	1553	1244	988	792	656	560	485	410	315	160	40	24	19	15
100%	98%	91%	82%	71%	59%	48%	38%	30%	24%	20%	17%	15%	13%	10%	5%	1%	1%	1%	0%

Intensities in 180° c-plane

0°	2°	4°	6°	8°	10°	12°	14°	16°	18°	20°	22°	24°	26°	28°	30°	32°	34°	36°	38°
3266	3200	2994	2687	2315	1917	1558	1251	1008	813	670	566	483	400	293	168	49	23	18	15
100%	98%	92%	82%	71%	59%	48%	38%	31%	25%	21%	17%	15%	12%	9%	5%	1%	1%	1%	0%

Intensities in 270° c-plane

0°	2°	4°	6°	8°	10°	12°	14°	16°	18°	20°	22°	24°	26°	28°	30°	32°	34°	36°	38°
3266	3196	3005	2712	2329	1929	1554	1235	980	788	653	558	478	393	278	121	32	23	18	14
100%	98%	92%	83%	71%	59%	48%	38%	30%	24%	20%	17%	15%	12%	8%	4%	1%	1%	1%	0%

Beam angle 50%	Field angle 10%	Cutoff angle 2,5%	Intensity ratio in 120° cone	Intensity ratio in 90° cone
23.1°	54.9°	62.1°	1.0%	1.0%

