

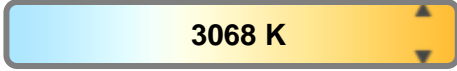
Light efficiency:



Light quality:



Color temperature:



Output: 1001 lm

Peak: 7296 cd

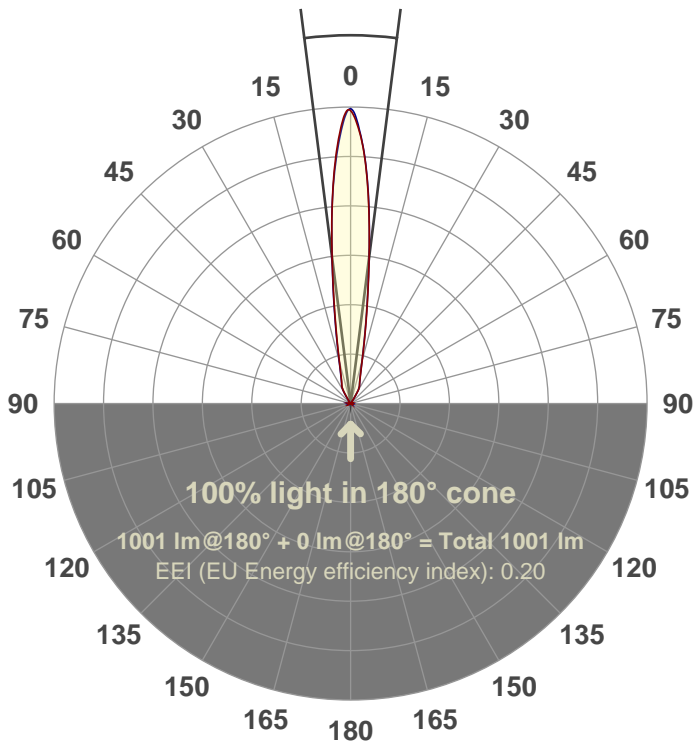
Power: 15.0 W

PF: 0.98



Beam angle

14.4°



Test number:

GRO-AD-SP-RD

Luminaire Model:

GRO-AD-SP-RD

Date and time:

8/10/2017 1:37:25 PM

Description:

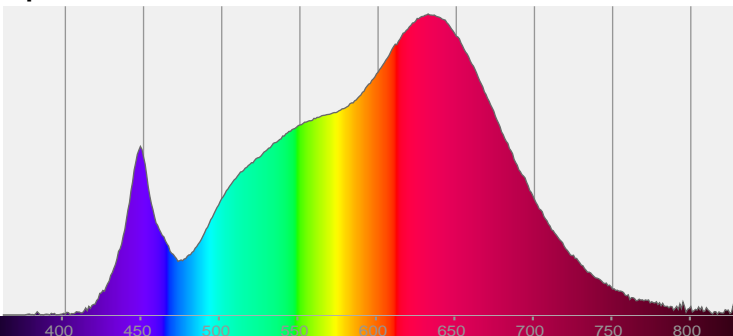
LUM: 1001

PPF: 18.9

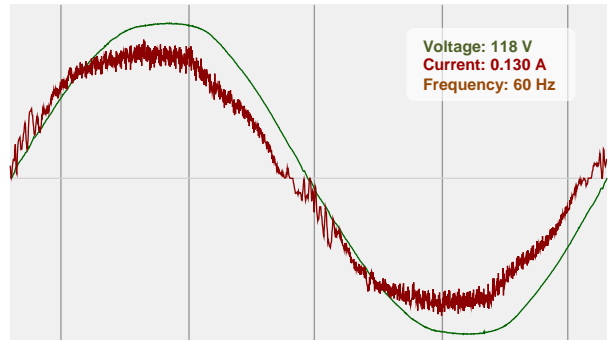


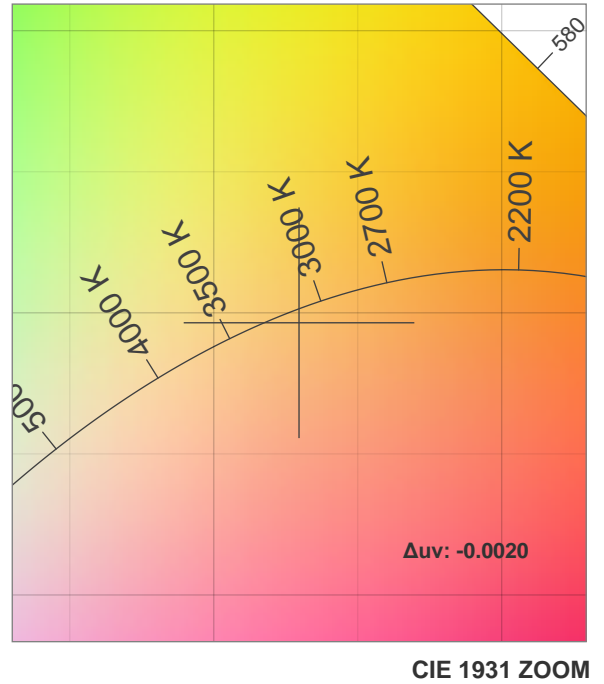
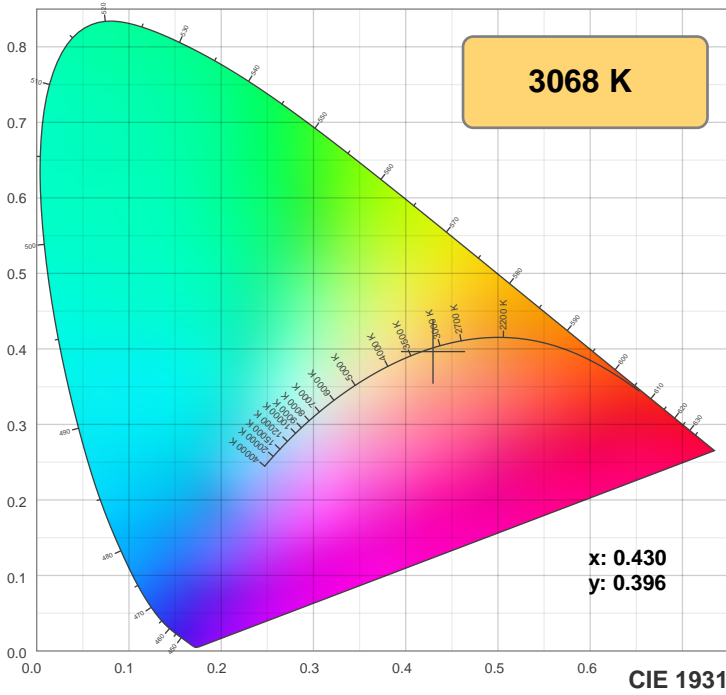
CIE 1931
x: 0.430
y: 0.396

Spectra

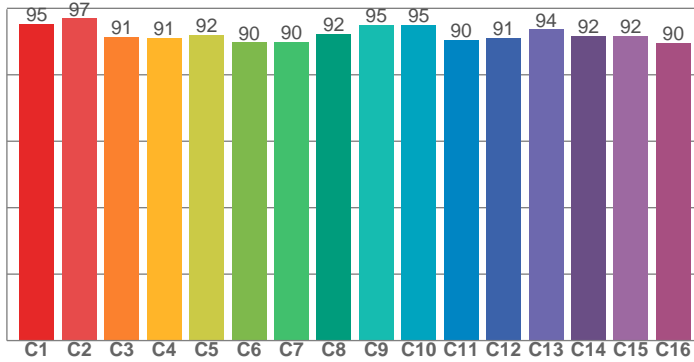


Power

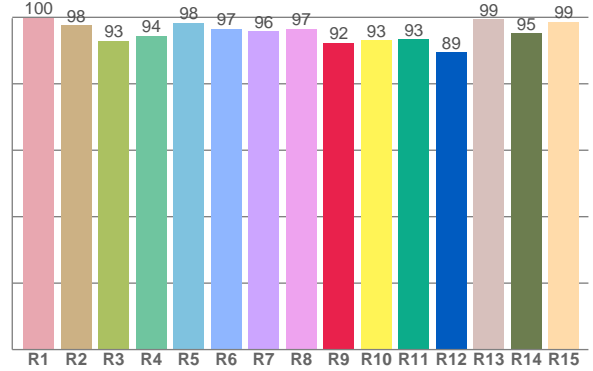




TM30: 92.6



CRI: 96.5 (R1-R8)



CRI R values, only R1-R8 are used to calculate final CRI value

R1	R2	R3	R4	R5	R6	R7	R8	R9	R10	R11	R12	R13	R14	R15
99.9	97.6	93.0	94.5	98.3	96.6	95.8	96.5	92.4	93.1	93.3	89.5	99.3	95.1	98.7

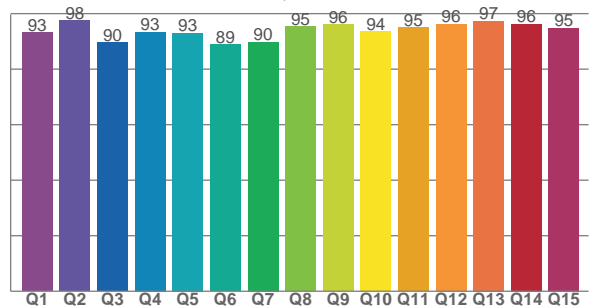
TM30 C values, 16 binned values out of total of 99 C values

C1	C2	C3	C4	C5	C6	C7	C8	C9	C10	C11	C12	C13	C14	C15	C16
95.3	97.0	91.4	91.2	92.1	89.7	89.9	92.3	95.1	95.0	90.4	91.2	93.7	91.8	91.7	89.6

CQS Q values

Q1	Q2	Q3	Q4	Q5	Q6	Q7	Q8	Q9	Q10	Q11	Q12	Q13	Q14	Q15
93.1	97.5	89.5	93.3	93.0	88.8	89.9	95.3	96.0	93.6	94.9	96.3	97.4	96.3	94.9

CQS: 93.2



Color parameters

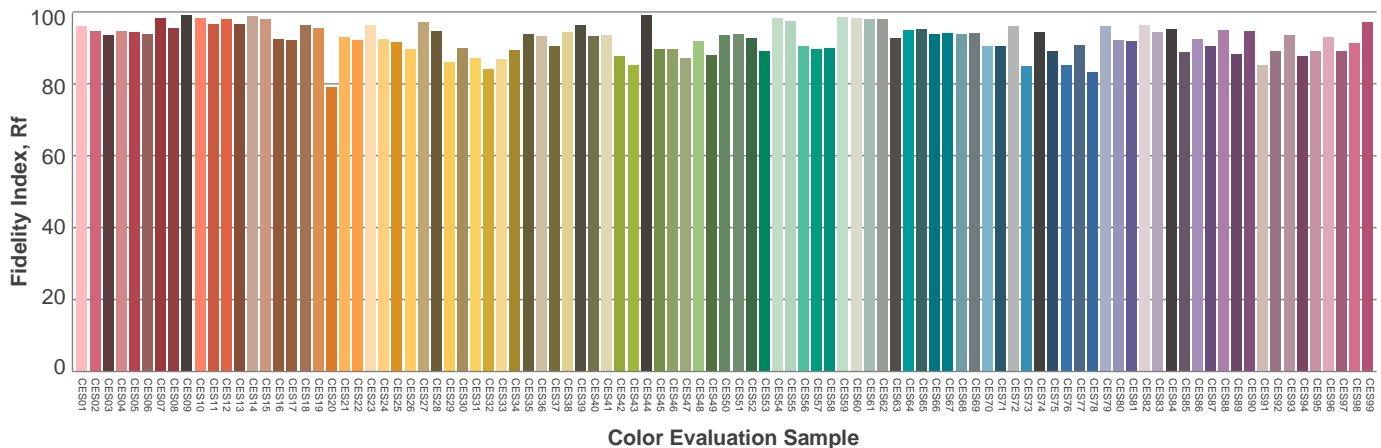
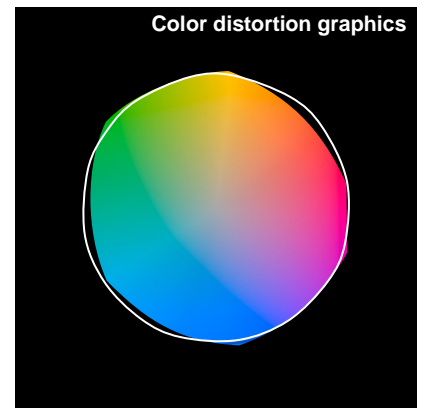
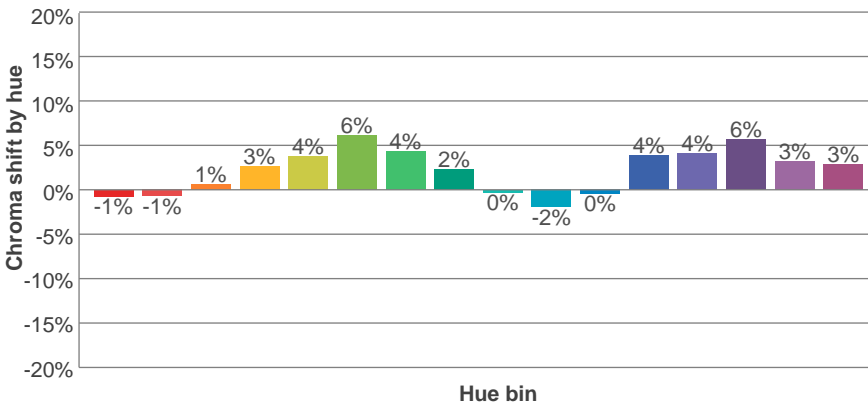
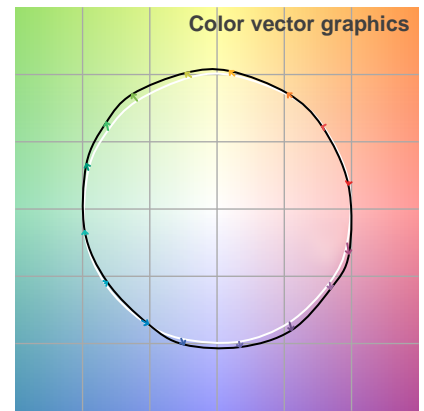
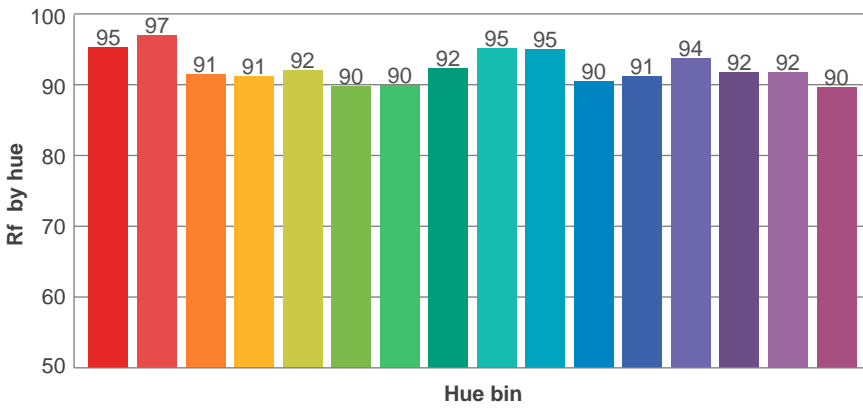
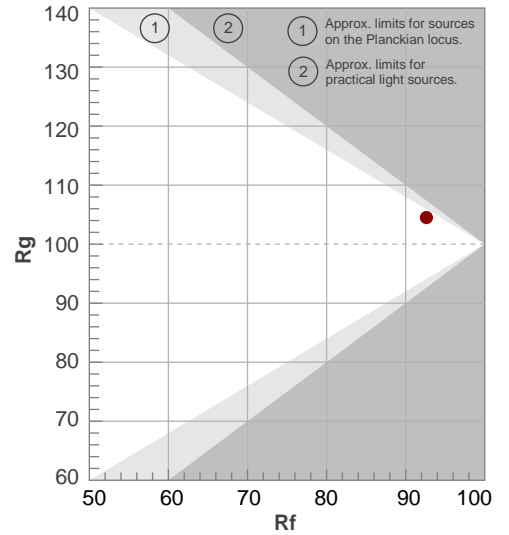
Color temperature	Color rendering index	Red component	Color fidelity	Color gamut	Color quality scale	Color coordinate cie 1931	Color coordinate cie 1931	Color coordinate	Color coordinate	Color deviation from black body
CCT	CRI	CRI R9	TM30 Rf	TM30 Rg	CQS	x	y	u	v	Δuv
3068 K	96.5	92.4	92.6	104.5	93.2	0.430	0.396	0.249	0.345	-0.0020

TM30 details

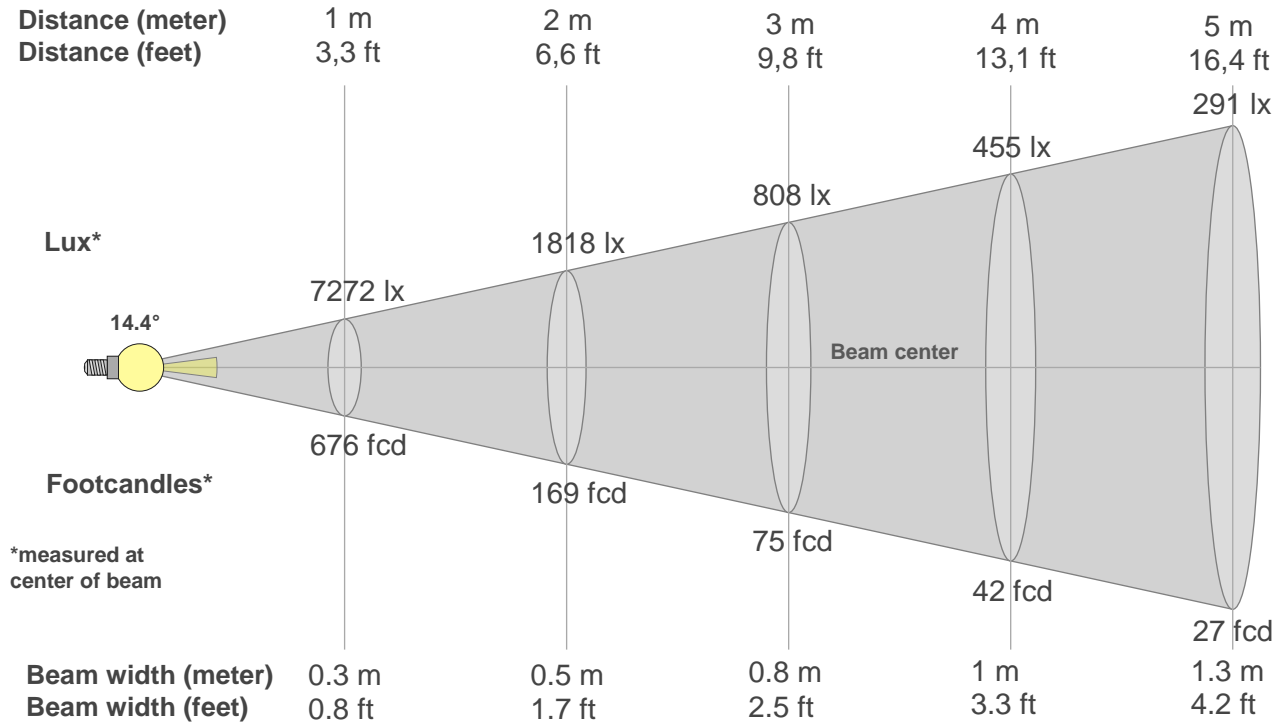
Rf 92.6
Fidelity index Rf

Rg 104.5
Gammut index Rg

Hue Bin	R _f	Graphic shifts (%)	
		Chroma	Hue
1	95	-1%	-2%
2	97	-1%	1%
3	91	1%	4%
4	91	3%	4%
5	92	4%	4%
6	90	6%	1%
7	90	4%	-4%
8	92	2%	-4%
9	95	0%	-2%
10	95	-2%	0%
11	90	0%	5%
12	91	4%	3%
13	94	4%	0%
14	92	6%	-2%
15	92	3%	-4%
16	90	3%	-7%



Beam details



Beam intensities from 1-20m

1m	2m	3m	4m	5m	6m	7m	8m	9m	10m	11m	12m	13m	14m	15m	16m	17m	18m	19m	20m
3.3ft	6.6ft	9.8ft	13.1ft	16.4ft	19.7ft	23ft	26.2ft	29.5ft	32.8ft	36.1ft	39.4ft	42.7ft	45.9ft	49.2ft	52.5ft	55.8ft	59.1ft	62.3ft	65.6ft
7272lx	1818lx	808lx	455lx	291lx	202lx	148lx	114lx	90lx	73lx	60lx	51lx	43lx	37lx	32lx	28lx	25lx	22lx	20lx	18lx
675.6fc	168.9fc	75.1fcd	42.2fcd	27fcd	18.8fcd	13.8fcd	10.6fcd	8.3fcd	6.8fcd	5.6fcd	4.7fcd	4fcd	3.4fcd	3fcd	2.6fcd	2.3fcd	2.1fcd	1.9fcd	1.7fcd

Intensities in 0° c-plane

0°	1°	2°	3°	4°	5°	6°	7°	8°	9°	10°	11°	12°	13°	14°	15°	16°	17°	18°	19°
7272	7197	6844	6357	5792	5137	4461	3784	3173	2663	2235	1889	1617	1397	1213	1068	955	864	787	725
100%	99%	94%	87%	80%	71%	61%	52%	44%	37%	31%	26%	22%	19%	17%	15%	13%	12%	11%	10%

Intensities in 90° c-plane

0°	1°	2°	3°	4°	5°	6°	7°	8°	9°	10°	11°	12°	13°	14°	15°	16°	17°	18°	19°
7272	7140	6747	6264	5725	5120	4451	3776	3201	2710	2286	1948	1667	1431	1244	1099	980	883	806	744
100%	98%	93%	86%	79%	70%	61%	52%	44%	37%	31%	27%	23%	20%	17%	15%	13%	12%	11%	10%

Intensities in 180° c-plane

0°	1°	2°	3°	4°	5°	6°	7°	8°	9°	10°	11°	12°	13°	14°	15°	16°	17°	18°	19°
7272	7025	6682	6243	5694	5065	4411	3776	3205	2718	2313	1966	1683	1454	1264	1111	990	896	816	750
100%	97%	92%	86%	78%	70%	61%	52%	44%	37%	32%	27%	23%	20%	17%	15%	14%	12%	11%	10%

Intensities in 270° c-plane

0°	1°	2°	3°	4°	5°	6°	7°	8°	9°	10°	11°	12°	13°	14°	15°	16°	17°	18°	19°
7272	7113	6713	6262	5715	5100	4431	3777	3188	2670	2260	1925	1646	1413	1233	1086	969	873	799	736
100%	98%	92%	86%	79%	70%	61%	52%	44%	37%	31%	26%	23%	19%	17%	15%	13%	12%	11%	10%

Beam angle 50%	Field angle 10%	Cutoff angle 2,5%	Intensity ratio in 120° cone	Intensity ratio in 90° cone
14.4°	38.4°	63.9°	99.6%	99.5%

THIS PAGE INTENTIONALLY LEFT BLANK