

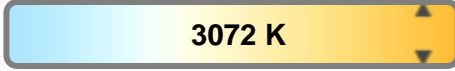
Light efficiency:



Light quality:



Color temperature:

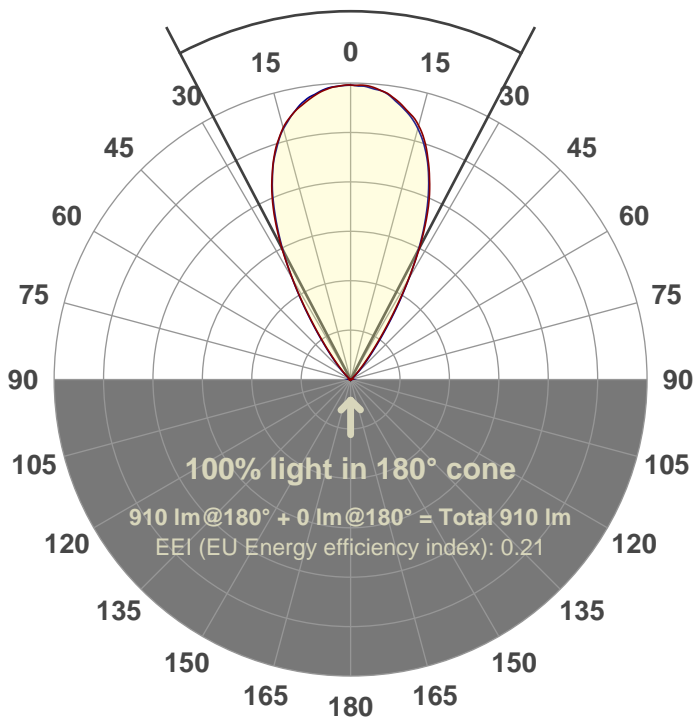


Output: 910 lm
Peak: 1173 cd
Power: 14.9 W
PF: 0.98



Beam angle

55.2°



Test number:
GRO-AD-WF-RD-91A
Luminaire Model:
GRO-AD-WF-RD-91A
Date and time:
8/10/2017 12:22:24 PM
Description:

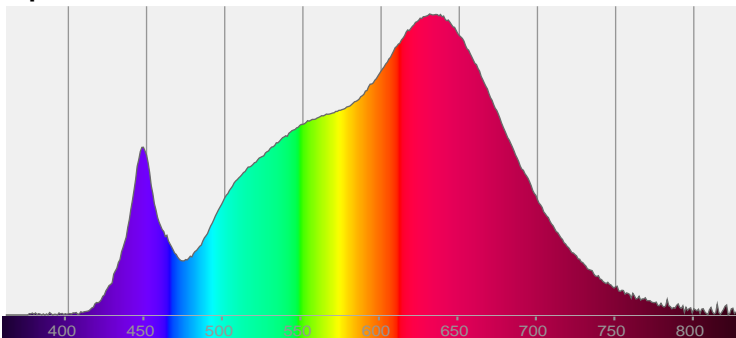
LUM: 910

PPF: 17.0

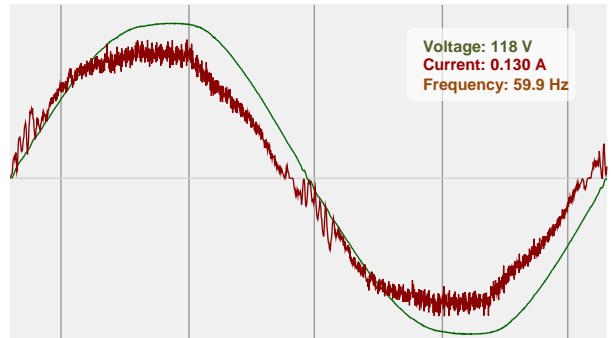


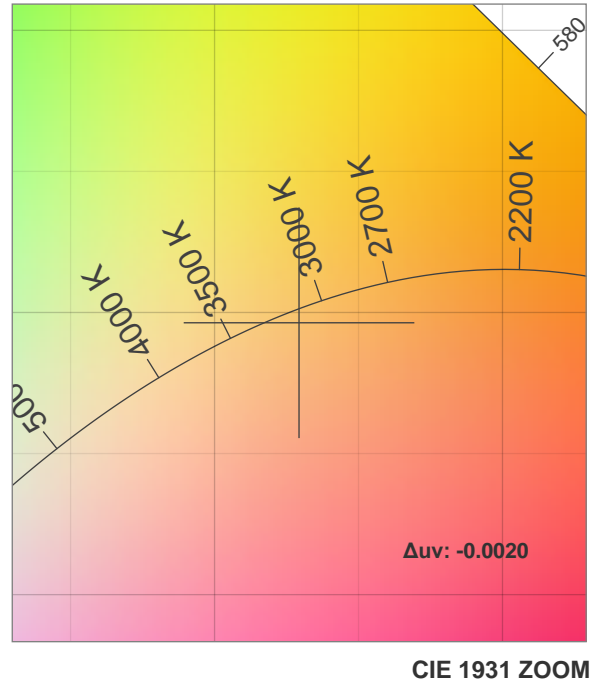
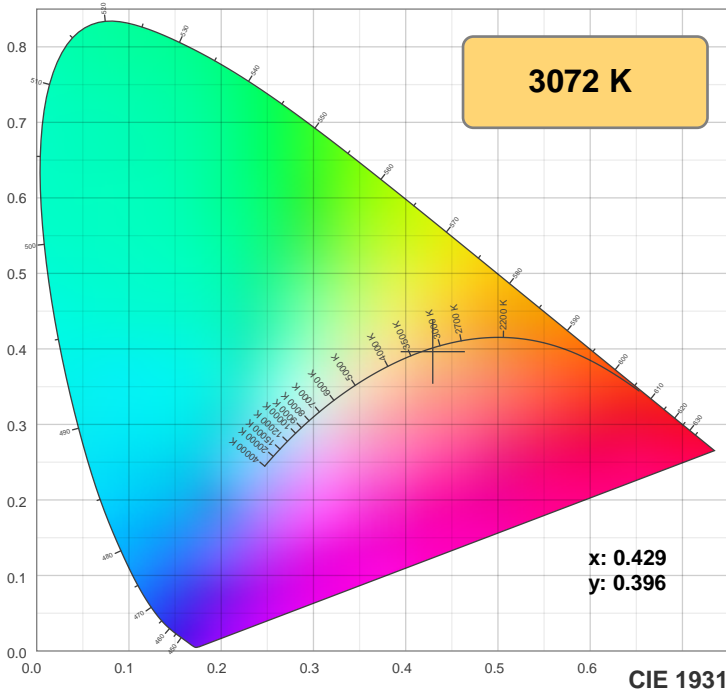
CIE 1931
x: 0.429
y: 0.396

Spectra

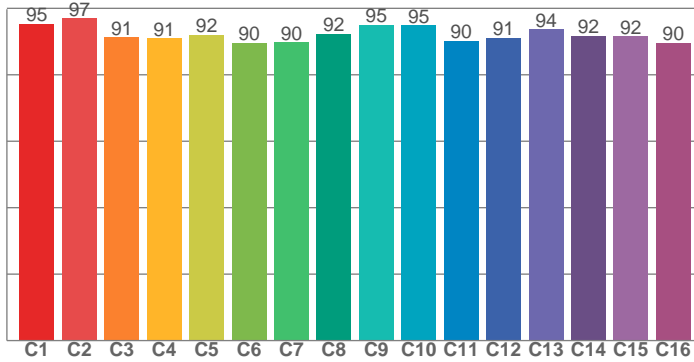


Power

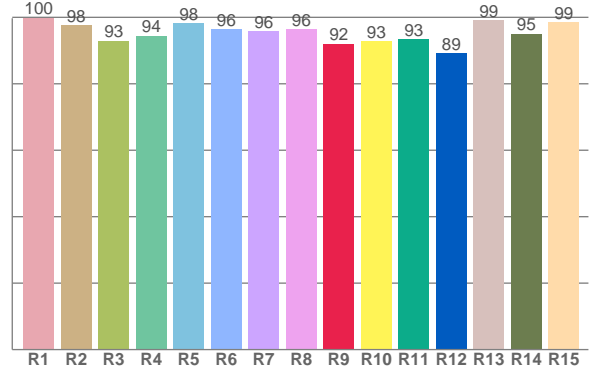




TM30: 92.5



CRI: 96.5 (R1-R8)



CRI R values, only R1-R8 are used to calculate final CRI value

R1	R2	R3	R4	R5	R6	R7	R8	R9	R10	R11	R12	R13	R14	R15
99.9	97.6	92.9	94.5	98.3	96.4	95.7	96.4	92.1	92.8	93.4	89.3	99.2	95.1	98.6

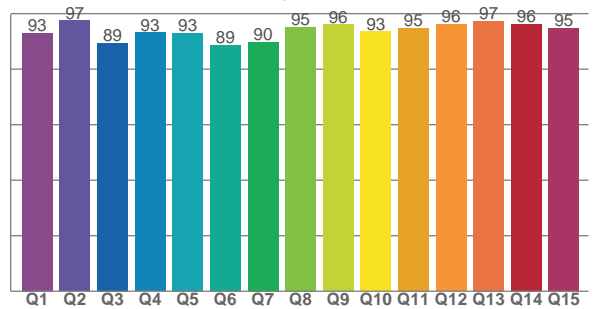
TM30 C values, 16 binned values out of total of 99 C values

C1	C2	C3	C4	C5	C6	C7	C8	C9	C10	C11	C12	C13	C14	C15	C16
95.3	96.9	91.2	91.0	92.0	89.7	89.8	92.3	95.0	94.9	90.3	91.1	93.6	91.7	91.6	89.5

CQS Q values

Q1	Q2	Q3	Q4	Q5	Q6	Q7	Q8	Q9	Q10	Q11	Q12	Q13	Q14	Q15
93.0	97.5	89.4	93.2	92.9	88.8	89.8	95.3	96.0	93.5	94.8	96.1	97.3	96.2	94.8

CQS: 93.2



Color parameters

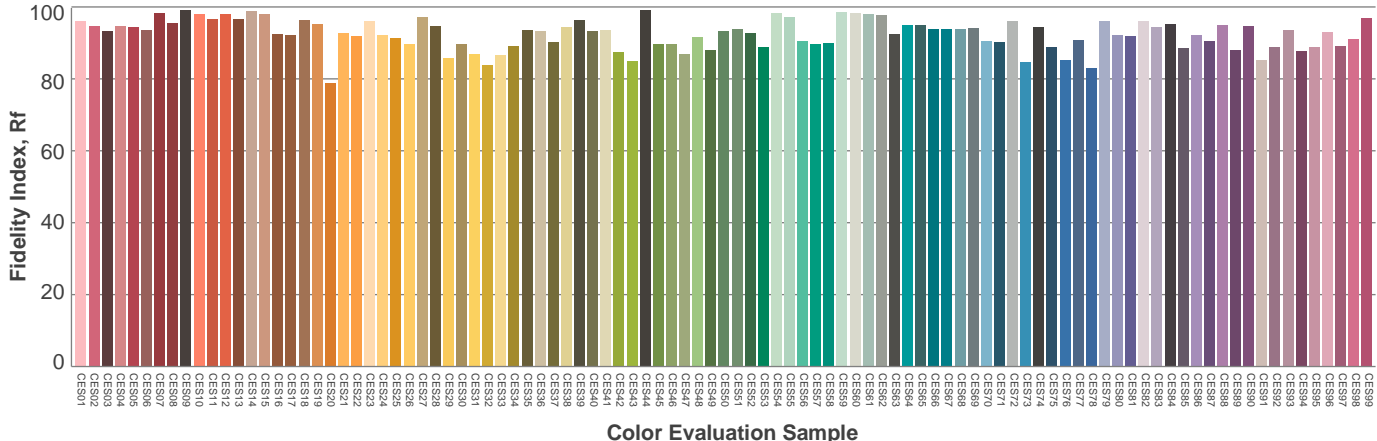
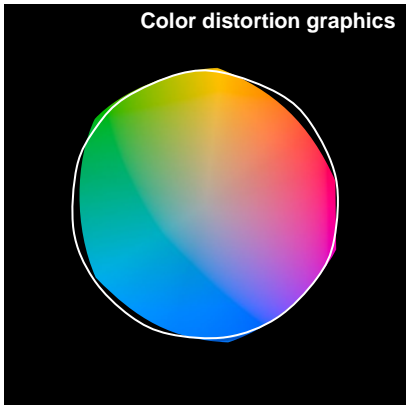
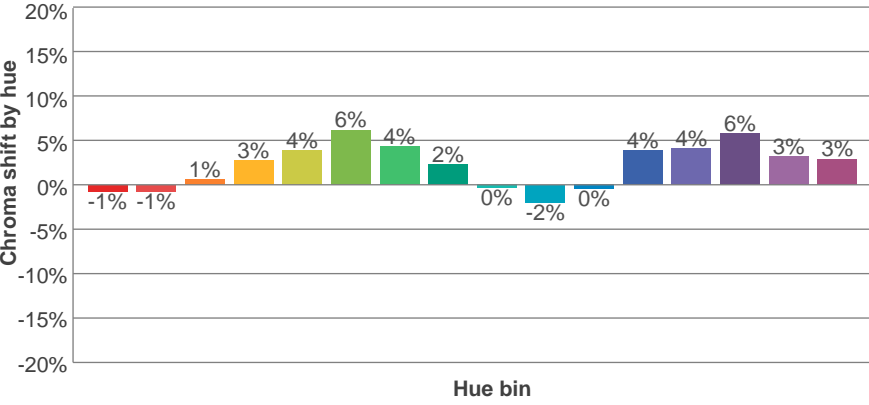
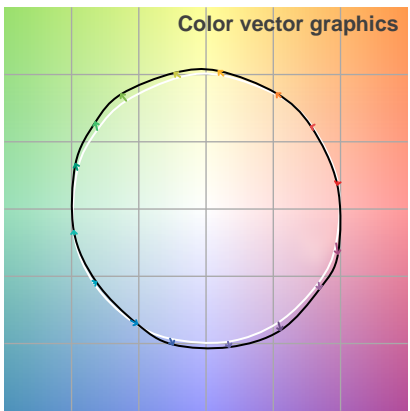
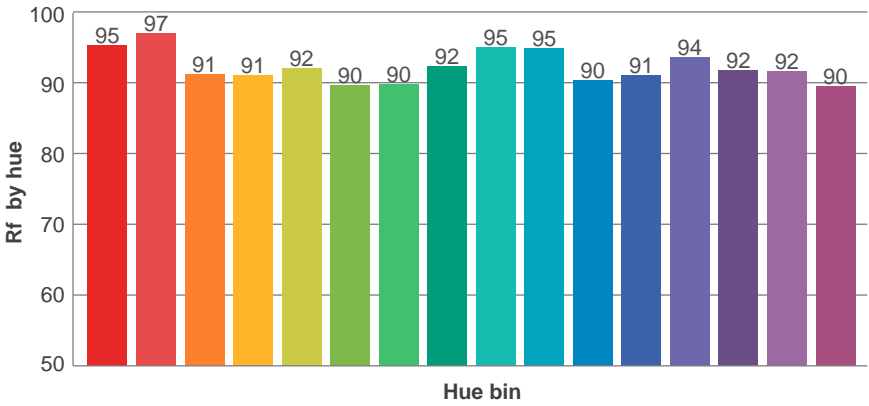
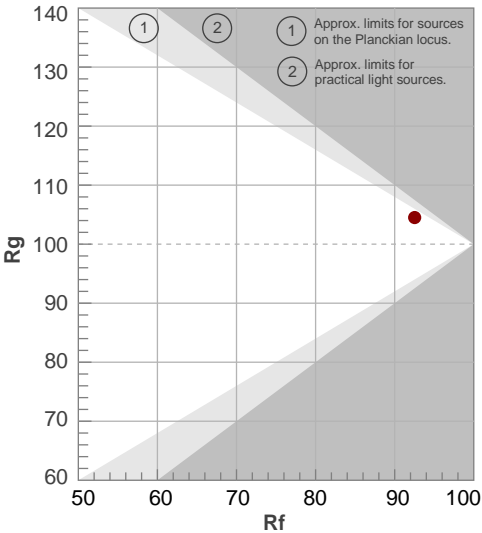
Color temperature	Color rendering index	Red component	Color fidelity	Color gamut	Color quality scale	Color coordinate cie 1931	Color coordinate cie 1931	Color coordinate	Color coordinate	Color diviation from black body
CCT	CRI	CRI R9	TM30 Rf	TM30 Rg	CQS	x	y	u	v	Δuv
3072 K	96.5	92.1	92.5	104.5	93.2	0.429	0.396	0.249	0.345	-0.0020

TM30 details

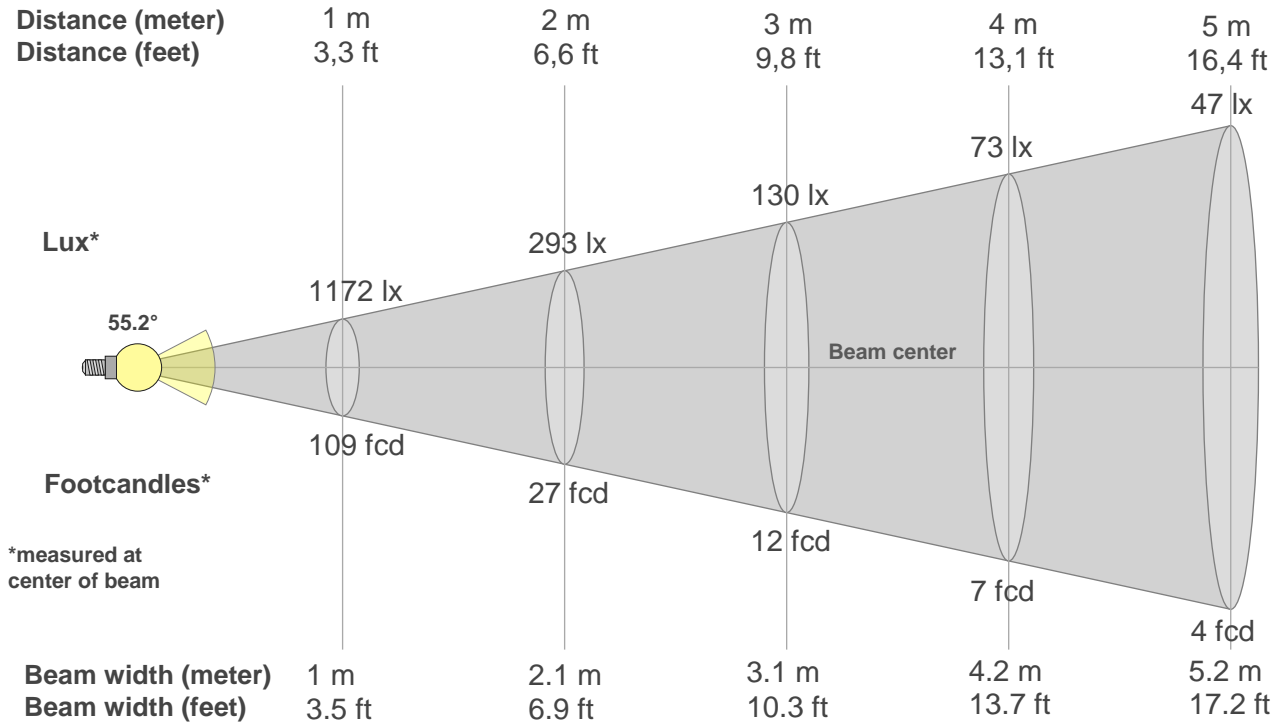
Rf 92.5
Fidelity index Rf

Rg 104.5
Gammut index Rg

Hue Bin	R _f	Graphic shifts (%)	
		Chroma	Hue
1	95	-1%	-2%
2	97	-1%	1%
3	91	1%	4%
4	91	3%	4%
5	92	4%	4%
6	90	6%	1%
7	90	4%	-4%
8	92	2%	-4%
9	95	0%	-3%
10	95	-2%	0%
11	90	0%	5%
12	91	4%	3%
13	94	4%	0%
14	92	6%	-2%
15	92	3%	-4%
16	90	3%	-7%



Beam details



Beam intensities from 1-20m

1m	2m	3m	4m	5m	6m	7m	8m	9m	10m	11m	12m	13m	14m	15m	16m	17m	18m	19m	20m
3.3ft	6.6ft	9.8ft	13.1ft	16.4ft	19.7ft	23ft	26.2ft	29.5ft	32.8ft	36.1ft	39.4ft	42.7ft	45.9ft	49.2ft	52.5ft	55.8ft	59.1ft	62.3ft	65.6ft
1172lx	293lx	130lx	73lx	47lx	33lx	24lx	18lx	14lx	12lx	10lx	8lx	7lx	6lx	5lx	5lx	4lx	4lx	3lx	3lx
108.9fc	27.2fcd	12.1fcd	6.8fcd	4.4fcd	3fcd	2.2fcd	1.7fcd	1.3fcd	1.1fcd	0.9fcd	0.8fcd	0.6fcd	0.6fcd	0.5fcd	0.4fcd	0.4fcd	0.3fcd	0.3fcd	0.3fcd

Intensities in 0° c-plane

0°	2°	4°	6°	8°	10°	12°	14°	16°	18°	20°	22°	24°	26°	28°	30°	32°	34°	36°	38°
1172	1170	1163	1151	1132	1110	1086	1056	1015	966	905	838	760	670	570	462	359	267	191	134
100%	100%	99%	98%	97%	95%	93%	90%	87%	82%	77%	71%	65%	57%	49%	39%	31%	23%	16%	11%

Intensities in 90° c-plane

0°	2°	4°	6°	8°	10°	12°	14°	16°	18°	20°	22°	24°	26°	28°	30°	32°	34°	36°	38°
1172	1169	1165	1154	1138	1117	1087	1052	1012	959	902	832	749	658	563	464	366	277	204	147
100%	100%	99%	98%	97%	95%	93%	90%	86%	82%	77%	71%	64%	56%	48%	40%	31%	24%	17%	13%

Intensities in 180° c-plane

0°	2°	4°	6°	8°	10°	12°	14°	16°	18°	20°	22°	24°	26°	28°	30°	32°	34°	36°	38°
1172	1173	1169	1157	1142	1119	1092	1065	1025	972	909	840	763	672	570	460	354	260	184	126
100%	100%	100%	99%	97%	95%	93%	91%	88%	83%	78%	72%	65%	57%	49%	39%	30%	22%	16%	11%

Intensities in 270° c-plane

0°	2°	4°	6°	8°	10°	12°	14°	16°	18°	20°	22°	24°	26°	28°	30°	32°	34°	36°	38°
1172	1169	1163	1156	1139	1113	1086	1054	1012	962	901	829	749	660	563	464	367	279	205	148
100%	100%	99%	99%	97%	95%	93%	90%	86%	82%	77%	71%	64%	56%	48%	40%	31%	24%	17%	13%

Beam angle 50%	Field angle 10%	Cutoff angle 2,5%	Intensity ratio in 120° cone	Intensity ratio in 90° cone
55.2°	77.9°	92.2°	99.5%	97.8%

THIS PAGE INTENTIONALLY LEFT BLANK