

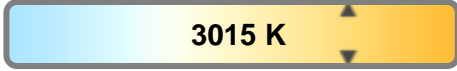
Light efficiency:



Light quality:



Color temperature:

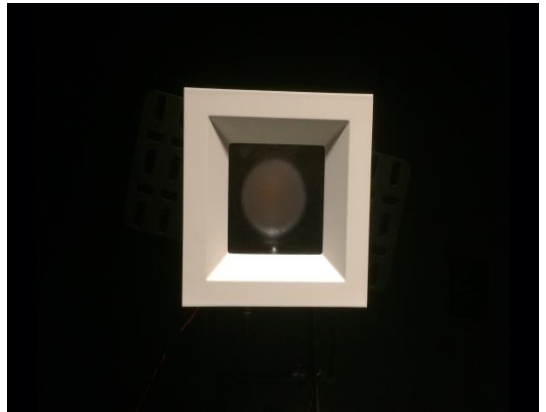


Output: 723 lm

Peak: 967 cd

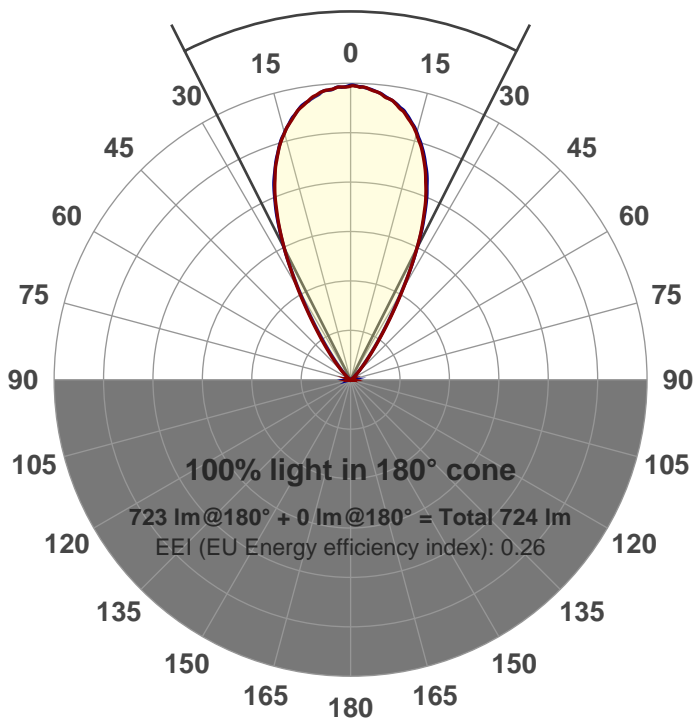
Power: 15.0 W

PF: 0.98



Beam angle

53.6°



Product name:

GRO-AD-WF-SQ-91A

Item number:

GRO-AD-WF-SQ-91A

Date and time:

5/3/2017 3:21:07 PM

Description:

LUM: 723

PPF: 12.2

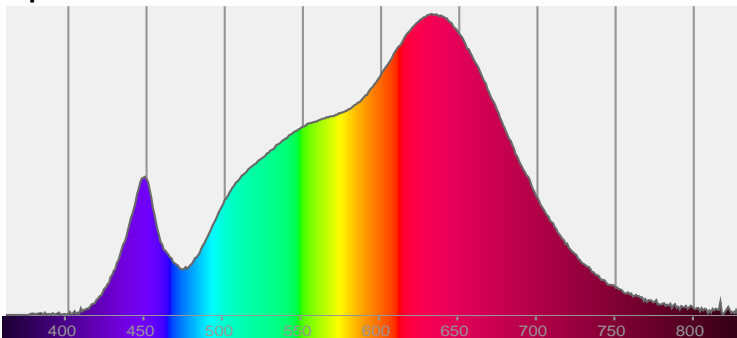


CIE 1931

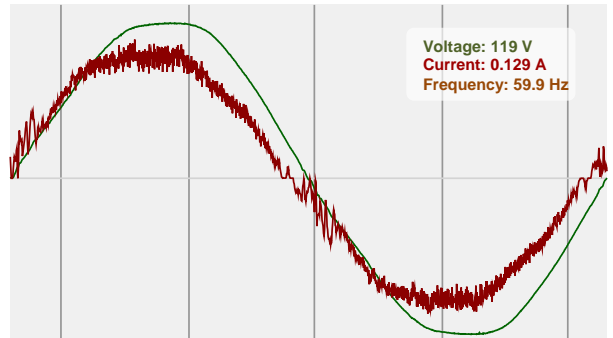
x: 0.436

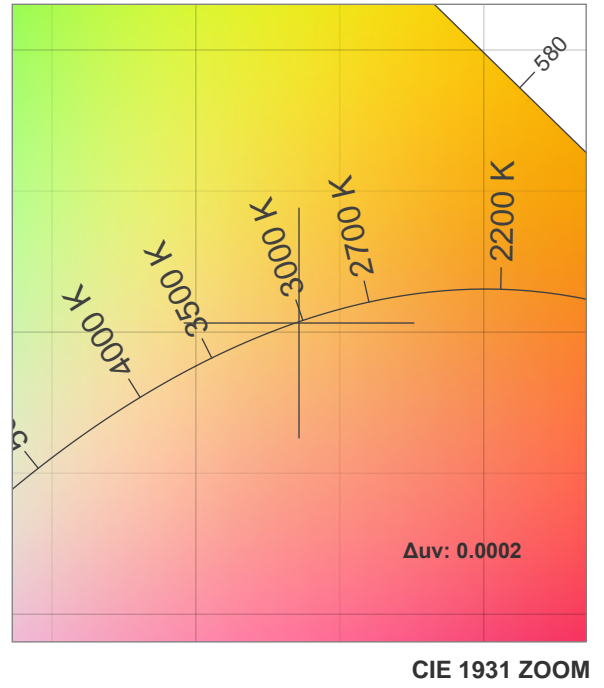
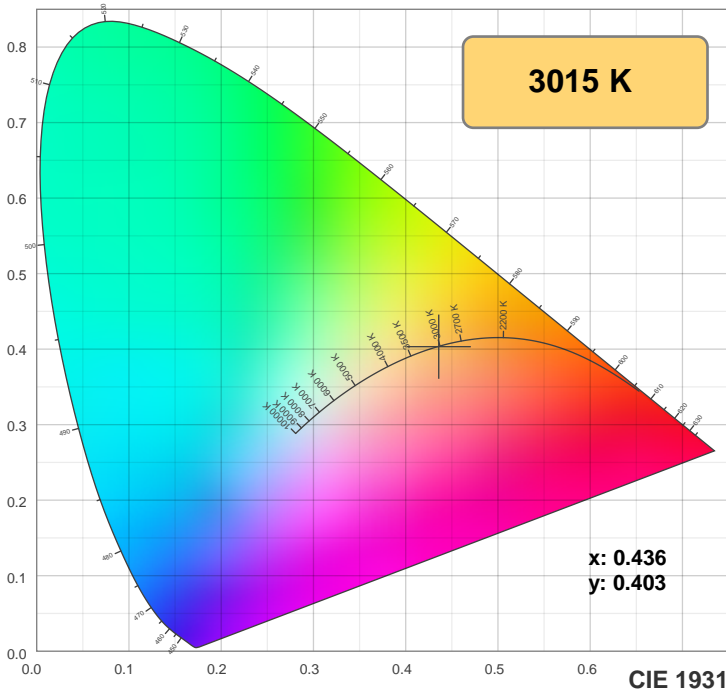
y: 0.403

Spectra

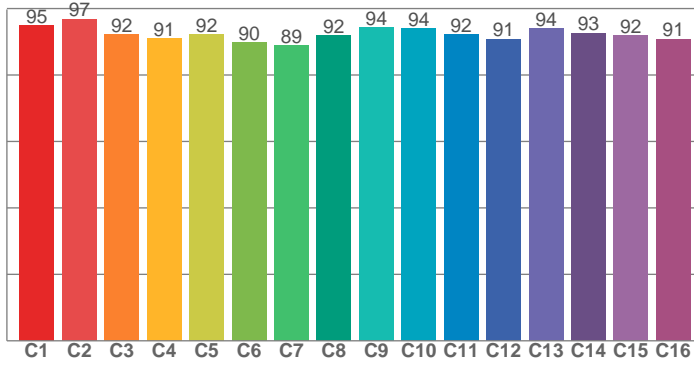


Power

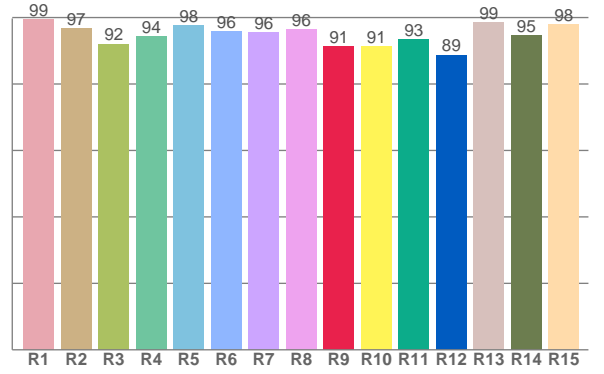




TM30: 92.7



CRI: 96.0 (R1-R8)



CRI R values, only R1-R8 are used to calculate final CRI value

R1	R2	R3	R4	R5	R6	R7	R8	R9	R10	R11	R12	R13	R14	R15
99.4	96.8	92.1	94.3	97.7	95.9	95.6	96.3	91.2	91.3	93.4	88.8	98.6	94.6	97.8

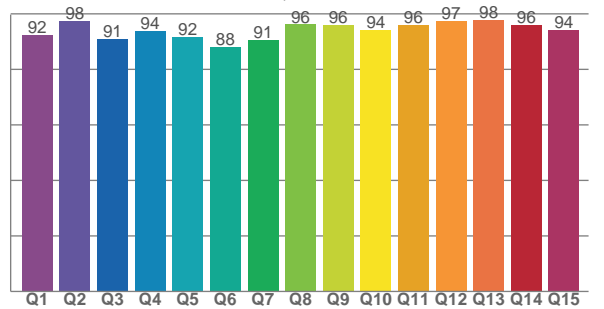
TM30 C values, 16 binned values out of total of 99 C values

C1	C2	C3	C4	C5	C6	C7	C8	C9	C10	C11	C12	C13	C14	C15	C16
94.8	96.9	92.2	91.0	92.2	89.9	88.8	91.9	94.2	93.9	92.2	90.8	94.0	92.6	91.9	90.9

CQS Q values

Q1	Q2	Q3	Q4	Q5	Q6	Q7	Q8	Q9	Q10	Q11	Q12	Q13	Q14	Q15
92.4	97.5	90.9	93.8	91.7	88.0	90.6	96.2	95.9	94.1	96.0	97.4	97.9	95.9	94.2

CQS: 93.3



Color parameters

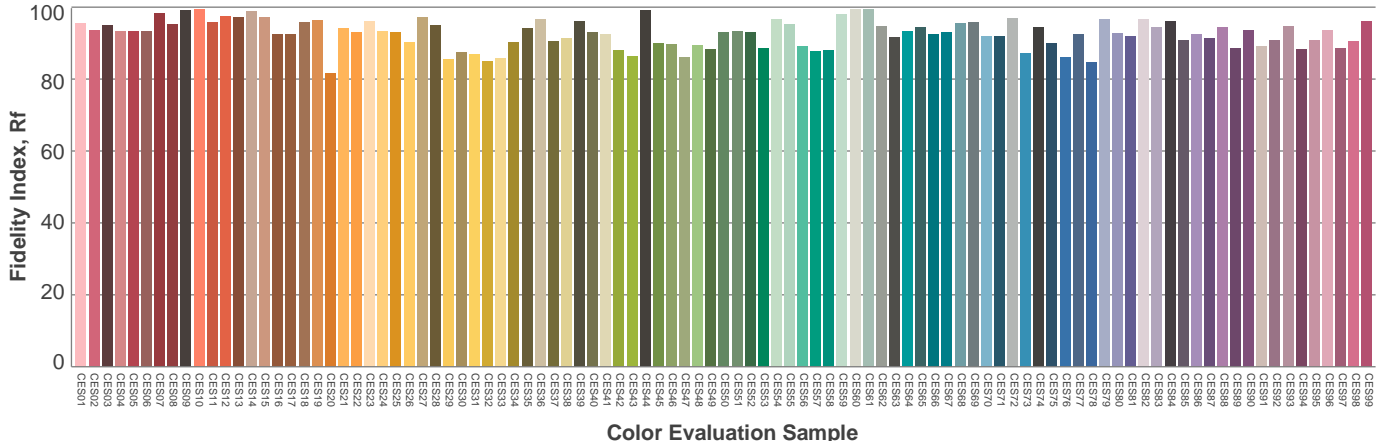
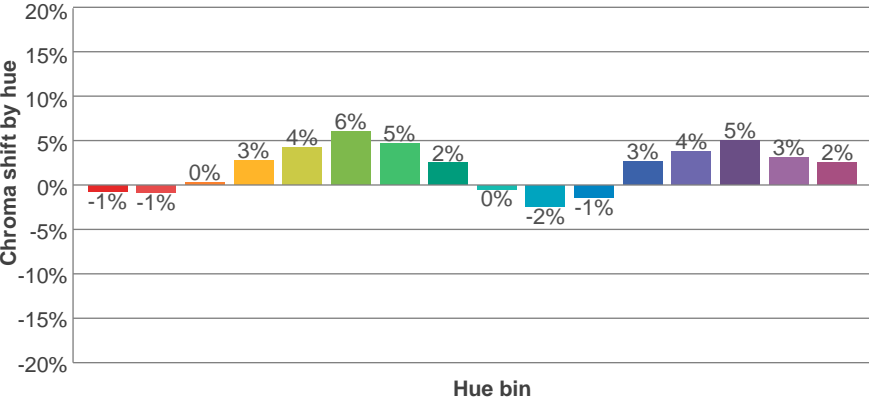
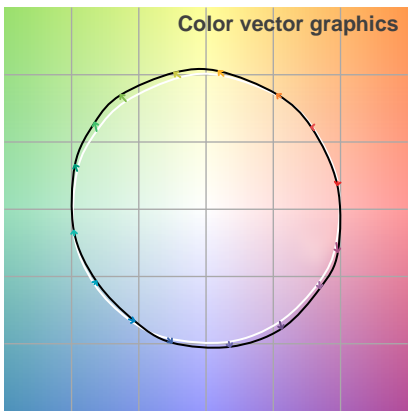
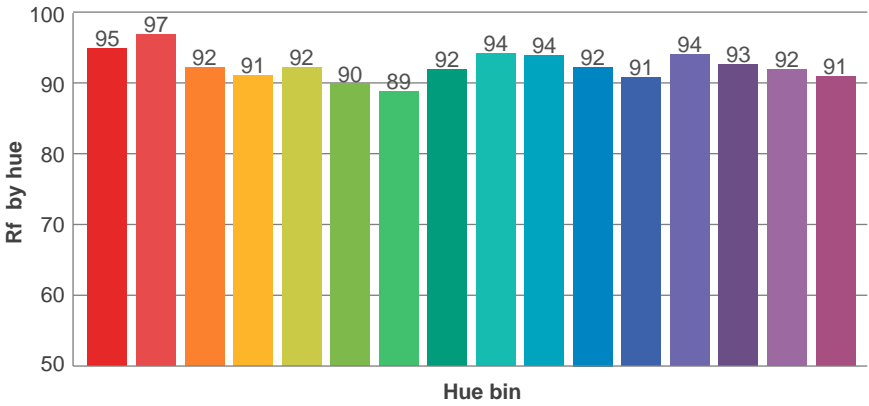
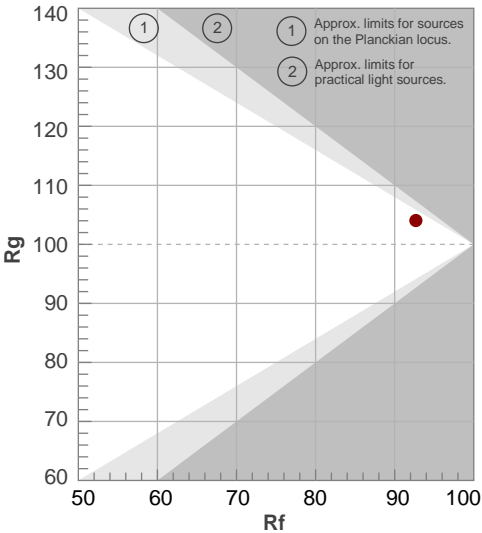
Color temperature	Color rendering index	Red component	Color fidelity	Color gamut	Color quality scale	Color coordinate cie 1931	Color coordinate cie 1931	Color coordinate	Color coordinate	Color deviation from black body
CCT	CRI	CRI R9	TM30 Rf	TM30 Rg	CQS	x	y	u	v	Δuv
3015 K	96.0	91.2	92.7	104.0	93.3	0.436	0.403	0.250	0.347	0.0002

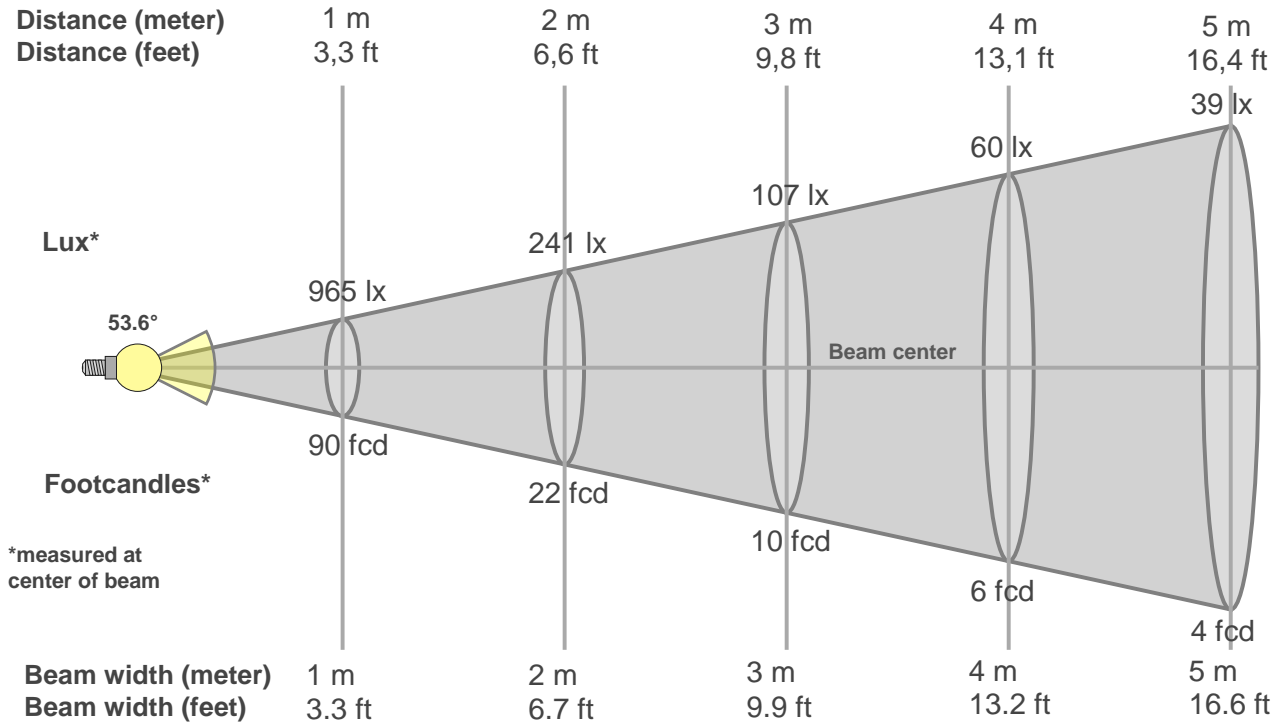
TM30 details

Rf 92.7
Fidelity index Rf

Rg 104.0
Gammut index Rg

Hue Bin	R _f	Graphic shifts (%)	
		Chroma	Hue
1	95	-1%	-2%
2	97	-1%	1%
3	92	0%	4%
4	91	3%	4%
5	92	4%	4%
6	90	6%	1%
7	89	5%	-4%
8	92	2%	-4%
9	94	0%	-4%
10	94	-2%	-1%
11	92	-1%	4%
12	91	3%	3%
13	94	4%	0%
14	93	5%	-2%
15	92	3%	-3%
16	91	2%	-6%





Beam intensities from 1-20m

1m	2m	3m	4m	5m	6m	7m	8m	9m	10m	11m	12m	13m	14m	15m	16m	17m	18m	19m	20m
3.3ft	6.6ft	9.8ft	13.1ft	16.4ft	19.7ft	23ft	26.2ft	29.5ft	32.8ft	36.1ft	39.4ft	42.7ft	45.9ft	49.2ft	52.5ft	55.8ft	59.1ft	62.3ft	65.6ft
965lx	241lx	107lx	60lx	39lx	27lx	20lx	15lx	12lx	10lx	8lx	7lx	6lx	5lx	4lx	4lx	3lx	3lx	3lx	2lx
89.6fcd	22.4fcd	10fcd	5.6fcd	3.6fcd	2.5fcd	1.8fcd	1.4fcd	1.1fcd	0.9fcd	0.7fcd	0.6fcd	0.5fcd	0.5fcd	0.4fcd	0.4fcd	0.3fcd	0.3fcd	0.2fcd	0.2fcd

Intensities in 0° c-plane

0°	2°	4°	6°	8°	10°	12°	14°	16°	18°	20°	22°	24°	26°	28°	30°	32°	34°	36°	38°
965	961	955	948	933	911	886	856	820	775	723	663	591	514	431	349	271	207	158	118
100%	100%	99%	98%	97%	94%	92%	89%	85%	80%	75%	69%	61%	53%	45%	36%	28%	22%	16%	12%

Intensities in 90° c-plane

0°	2°	4°	6°	8°	10°	12°	14°	16°	18°	20°	22°	24°	26°	28°	30°	32°	34°	36°	38°
965	960	953	946	930	914	887	856	822	777	727	670	598	517	427	338	257	188	136	98
100%	100%	99%	98%	96%	95%	92%	89%	85%	81%	75%	69%	62%	54%	44%	35%	27%	19%	14%	10%

Intensities in 180° c-plane

0°	2°	4°	6°	8°	10°	12°	14°	16°	18°	20°	22°	24°	26°	28°	30°	32°	34°	36°	38°
965	961	954	943	929	908	884	855	815	771	719	659	591	516	429	344	265	199	148	109
100%	100%	99%	98%	96%	94%	92%	89%	84%	80%	74%	68%	61%	53%	45%	36%	27%	21%	15%	11%

Intensities in 270° c-plane

0°	2°	4°	6°	8°	10°	12°	14°	16°	18°	20°	22°	24°	26°	28°	30°	32°	34°	36°	38°
965	962	955	945	929	912	889	858	820	778	729	669	599	518	430	337	256	191	139	99
100%	100%	99%	98%	96%	95%	92%	89%	85%	81%	76%	69%	62%	54%	45%	35%	26%	20%	14%	10%

Beam angle 50%	Field angle 10%	Cutoff angle 2,5%	Intensity ratio in 120° cone	Intensity ratio in 90° cone
53.6°	77.2°	93.9°	1.0%	1.0%

