

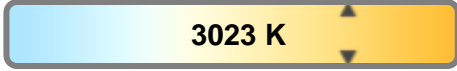
Light efficiency:



Light quality:



Color temperature:

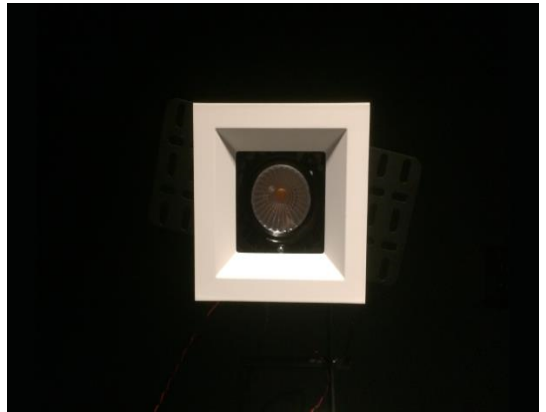


Output: 764 lm

Peak: 1059 cd

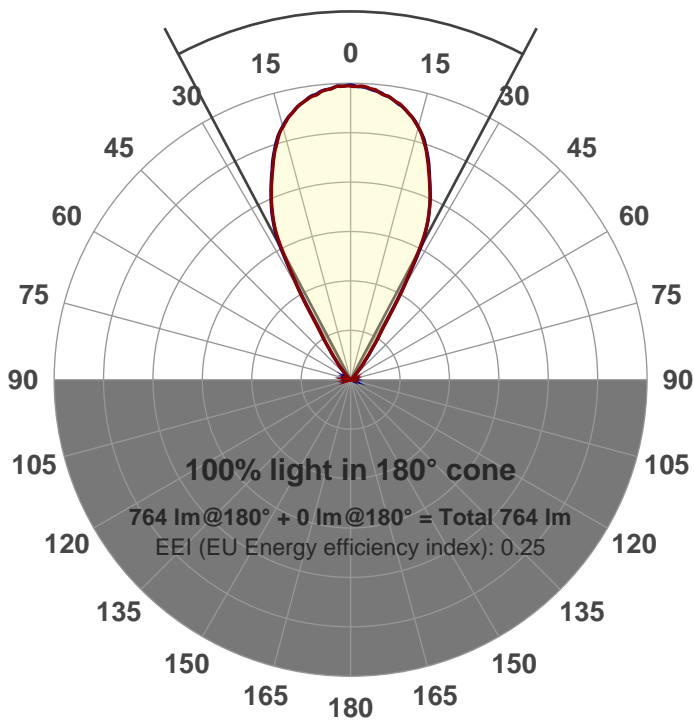
Power: 15.1 W

PF: 0.98



Beam angle

55.8°



Product name:

GRO-AD-WF-SQ

Item number:

GRO-AD-WF-SQ

Date and time:

5/3/2017 3:13:51 PM

Description:

LUM: 764

PPF: 12.9

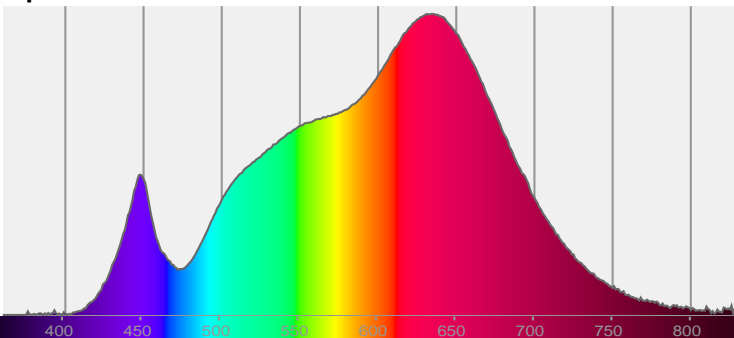


CIE 1931

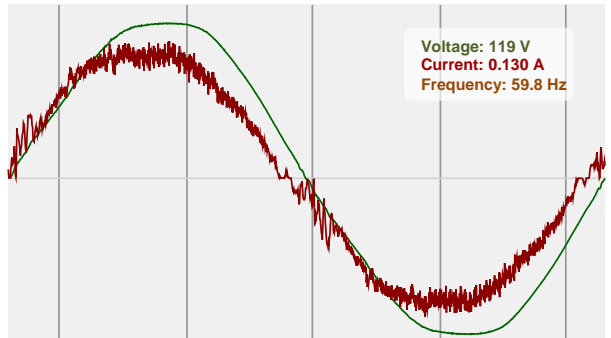
x: 0.435

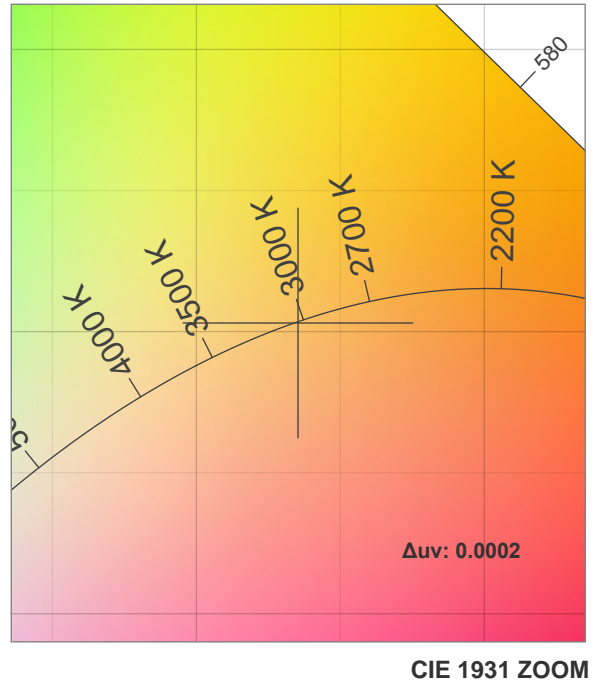
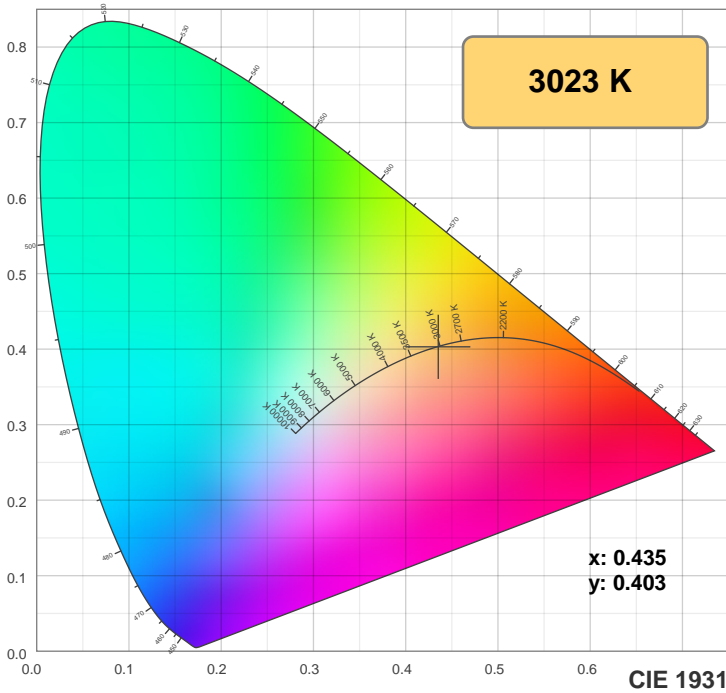
y: 0.403

Spectra

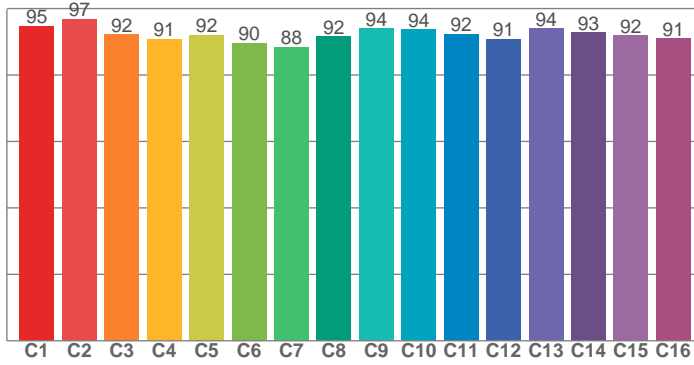


Power

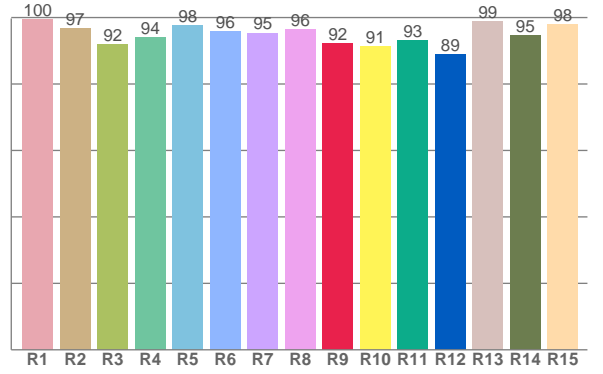




TM30: 92.6



CRI: 96.0 (R1-R8)



CRI R values, only R1-R8 are used to calculate final CRI value

R1	R2	R3	R4	R5	R6	R7	R8	R9	R10	R11	R12	R13	R14	R15
99.5	96.8	91.9	94.1	97.7	95.9	95.4	96.5	92.1	91.3	93.1	88.9	98.8	94.5	98.0

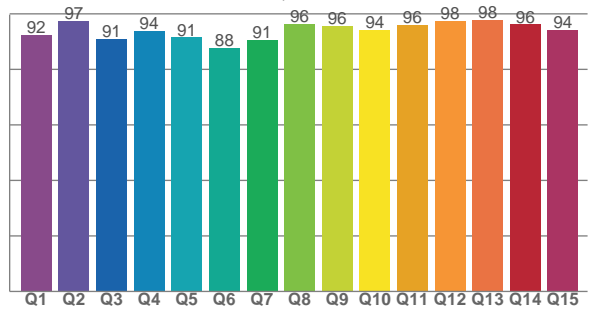
TM30 C values, 16 binned values out of total of 99 C values

C1	C2	C3	C4	C5	C6	C7	C8	C9	C10	C11	C12	C13	C14	C15	C16
94.8	96.9	92.3	90.9	92.0	89.6	88.5	91.7	94.0	93.7	92.3	90.8	94.0	92.7	91.9	91.0

CQS Q values

Q1	Q2	Q3	Q4	Q5	Q6	Q7	Q8	Q9	Q10	Q11	Q12	Q13	Q14	Q15
92.5	97.5	91.0	93.8	91.5	87.7	90.6	96.3	95.8	94.1	96.1	97.5	97.8	96.1	94.3

CQS: 93.3



Color parameters

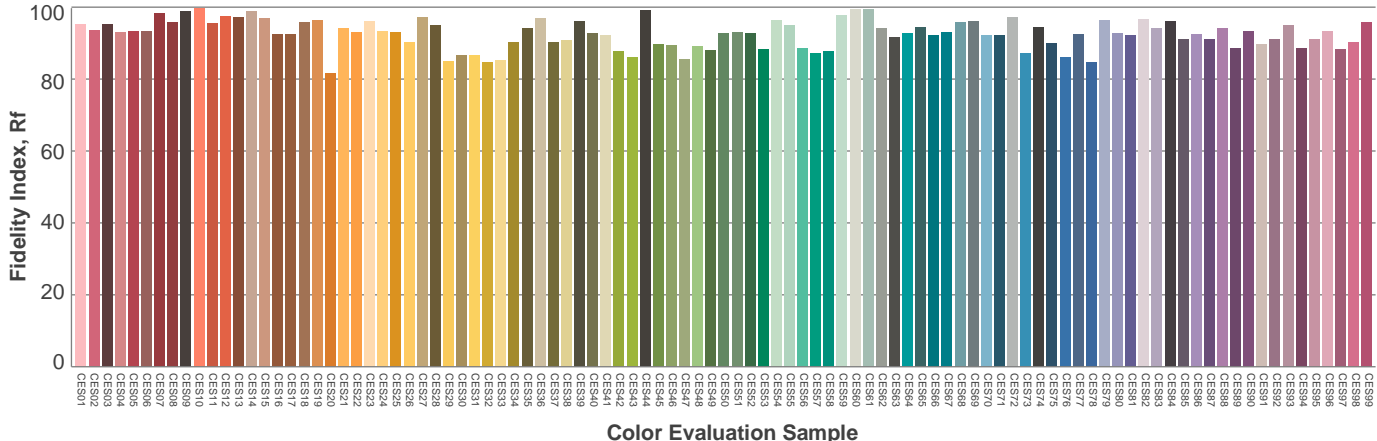
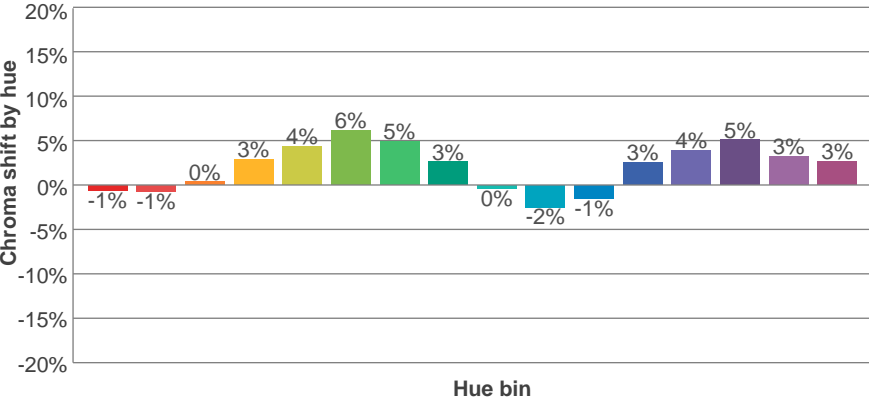
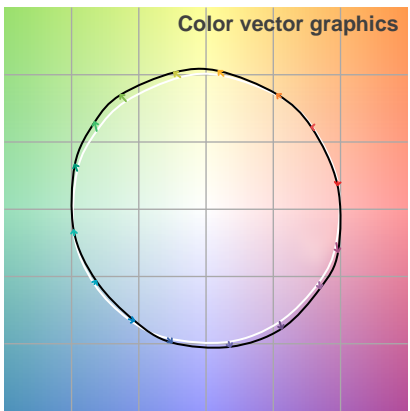
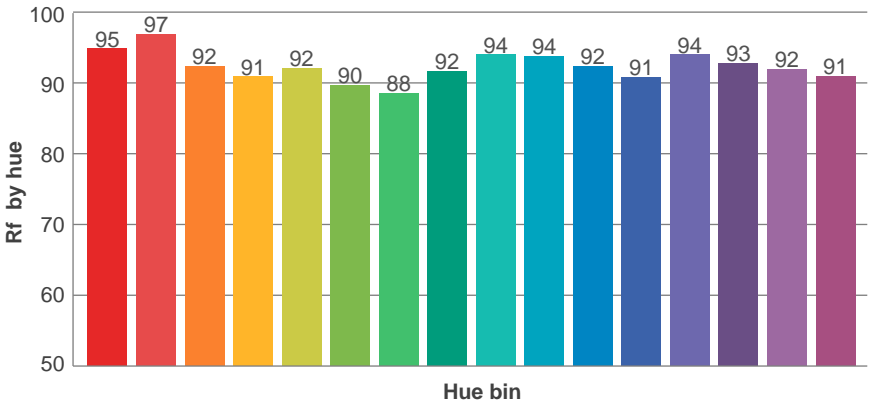
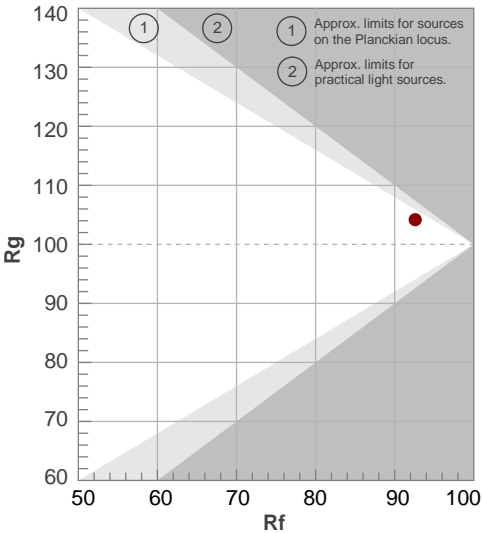
Color temperature	Color rendering index	Red component	Color fidelity	Color gamut	Color quality scale	Color coordinate cie 1931	Color coordinate cie 1931	Color coordinate	Color coordinate	Color deviation from black body
CCT	CRI	CRI R9	TM30 Rf	TM30 Rg	CQS	x	y	u	v	Δuv
3023 K	96.0	92.1	92.6	104.2	93.3	0.435	0.403	0.250	0.347	0.0002

TM30 details

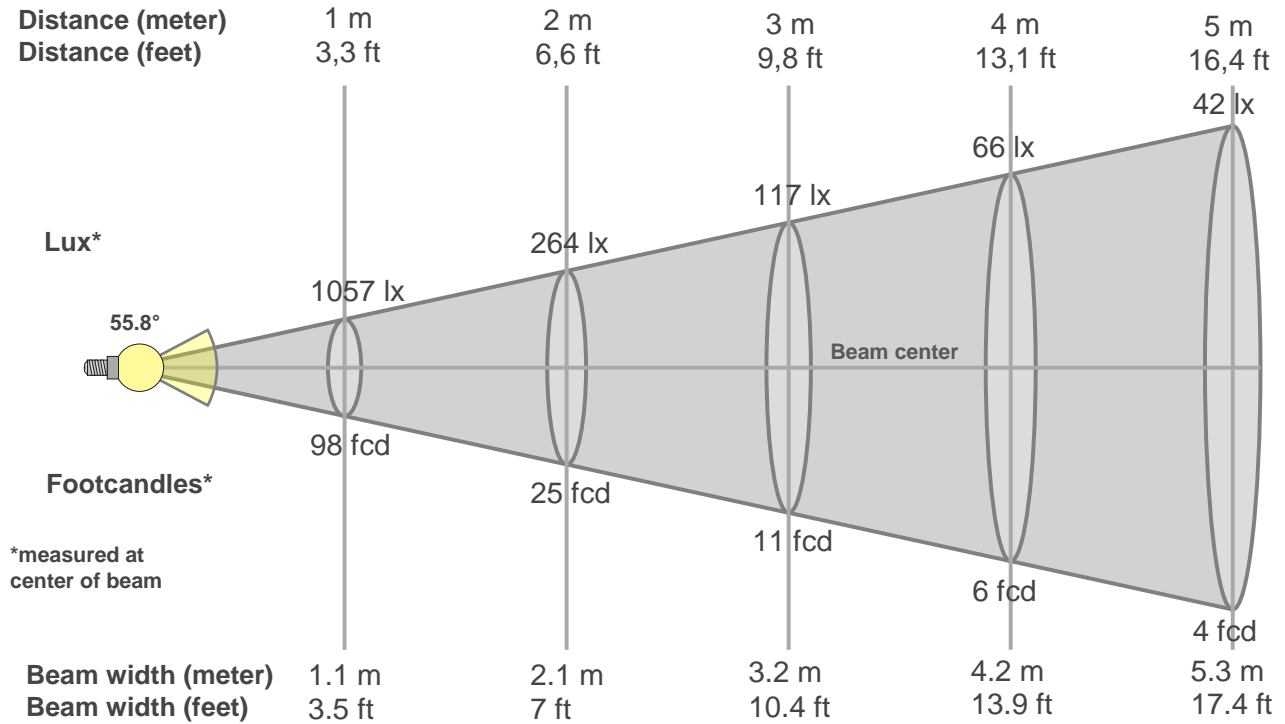
Rf 92.6
Fidelity index Rf

Rg 104.2
Gammut index Rg

Hue Bin	R _f	Graphic shifts (%)	
		Chroma	Hue
1	95	-1%	-2%
2	97	-1%	1%
3	92	0%	4%
4	91	3%	4%
5	92	4%	4%
6	90	6%	1%
7	88	5%	-4%
8	92	3%	-4%
9	94	0%	-4%
10	94	-2%	-1%
11	92	-1%	4%
12	91	3%	3%
13	94	4%	0%
14	93	5%	-1%
15	92	3%	-3%
16	91	3%	-6%



Beam details



Beam intensities from 1-20m

1m	2m	3m	4m	5m	6m	7m	8m	9m	10m	11m	12m	13m	14m	15m	16m	17m	18m	19m	20m
3.3ft	6.6ft	9.8ft	13.1ft	16.4ft	19.7ft	23ft	26.2ft	29.5ft	32.8ft	36.1ft	39.4ft	42.7ft	45.9ft	49.2ft	52.5ft	55.8ft	59.1ft	62.3ft	65.6ft
1057lx	264lx	117lx	66lx	42lx	29lx	22lx	17lx	13lx	11lx	9lx	7lx	6lx	5lx	5lx	4lx	4lx	3lx	3lx	3lx
98.2fcd	24.5fcd	10.9fcd	6.1fcd	3.9fcd	2.7fcd	2fcd	1.5fcd	1.2fcd	1fcd	0.8fcd	0.7fcd	0.6fcd	0.5fcd	0.4fcd	0.4fcd	0.3fcd	0.3fcd	0.3fcd	0.2fcd

Intensities in 0° c-plane

0°	2°	4°	6°	8°	10°	12°	14°	16°	18°	20°	22°	24°	26°	28°	30°	32°	34°	36°	38°
1057	1055	1047	1039	1026	1009	985	957	923	873	815	758	698	629	511	372	224	155	107	74
100%	100%	99%	98%	97%	95%	93%	91%	87%	83%	77%	72%	66%	60%	48%	35%	21%	15%	10%	7%

Intensities in 90° c-plane

0°	2°	4°	6°	8°	10°	12°	14°	16°	18°	20°	22°	24°	26°	28°	30°	32°	34°	36°	38°
1057	1056	1048	1041	1028	1008	986	960	925	878	822	762	702	635	528	349	209	153	106	73
100%	100%	99%	99%	97%	95%	93%	91%	88%	83%	78%	72%	66%	60%	50%	33%	20%	14%	10%	7%

Intensities in 180° c-plane

0°	2°	4°	6°	8°	10°	12°	14°	16°	18°	20°	22°	24°	26°	28°	30°	32°	34°	36°	38°
1057	1056	1048	1034	1024	1008	984	955	921	874	816	758	702	632	512	375	226	156	106	72
100%	100%	99%	98%	97%	95%	93%	90%	87%	83%	77%	72%	66%	60%	48%	36%	21%	15%	10%	7%

Intensities in 270° c-plane

0°	2°	4°	6°	8°	10°	12°	14°	16°	18°	20°	22°	24°	26°	28°	30°	32°	34°	36°	38°
1057	1053	1045	1037	1023	1004	983	957	922	876	822	760	701	631	528	354	213	158	112	77
100%	100%	99%	98%	97%	95%	93%	91%	87%	83%	78%	72%	66%	60%	50%	33%	20%	15%	11%	7%

Beam angle 50%	Field angle 10%	Cutoff angle 2,5%	Intensity ratio in 120° cone	Intensity ratio in 90° cone
55.8°	72.2°	86.2°	1.0%	1.0%

