

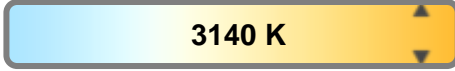
Light efficiency:



Light quality:



Color temperature:

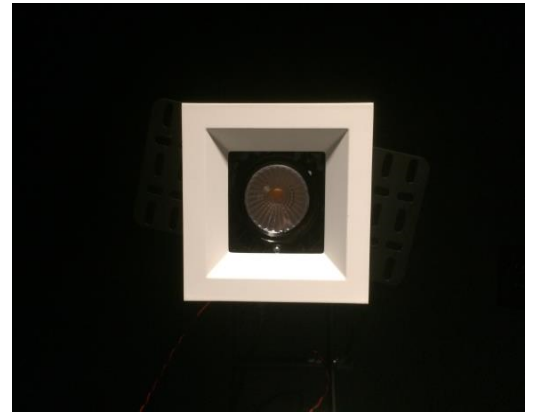


Output: 1233 lm

Peak: 2937 cd

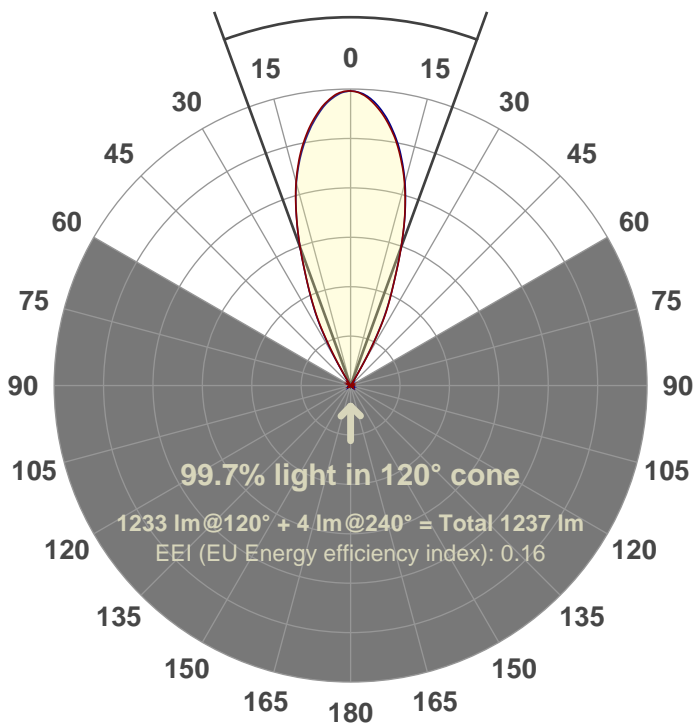
Power: 14.7 W

PF: 0.98



Beam angle

40.1°



Test number:

GRO-CZ14-FL-SQ

Luminaire Model:

GRO-CZ14-FL-SQ

Date and time:

9/26/2017 3:25:44 PM

Description:

CZ V6

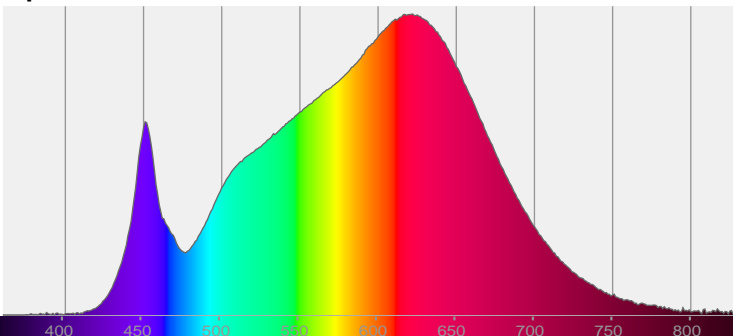
LUM: 1233

PPF: 20.8

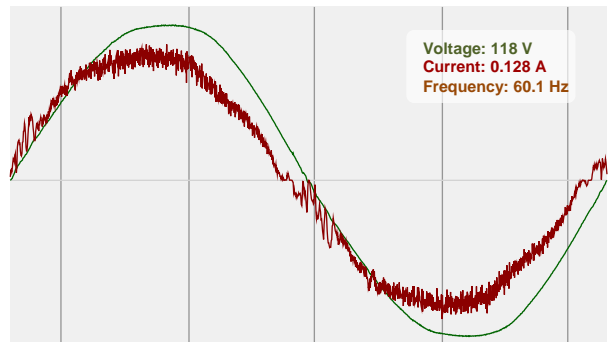


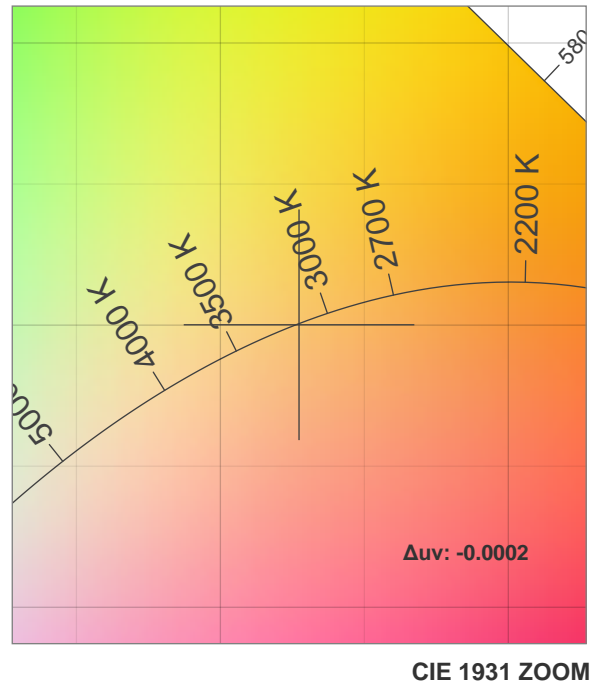
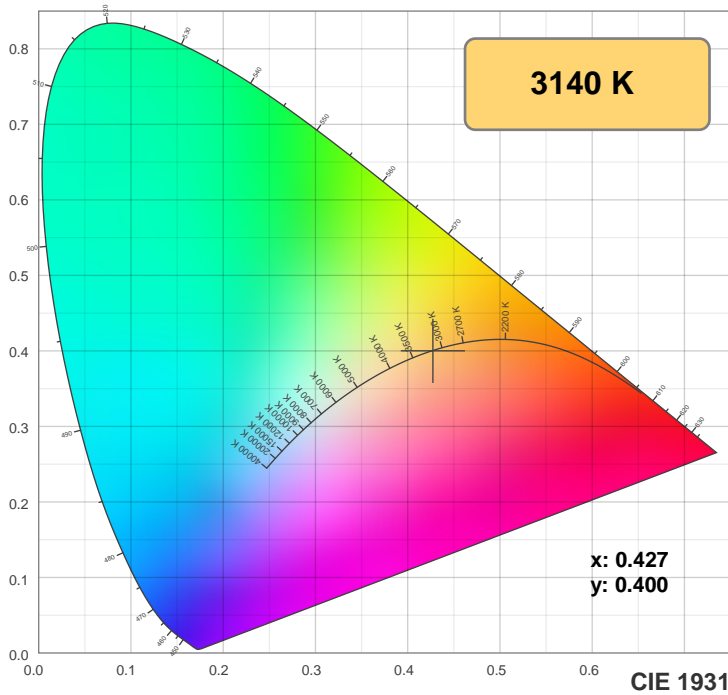
CIE 1931
x: 0.427
y: 0.400

Spectra

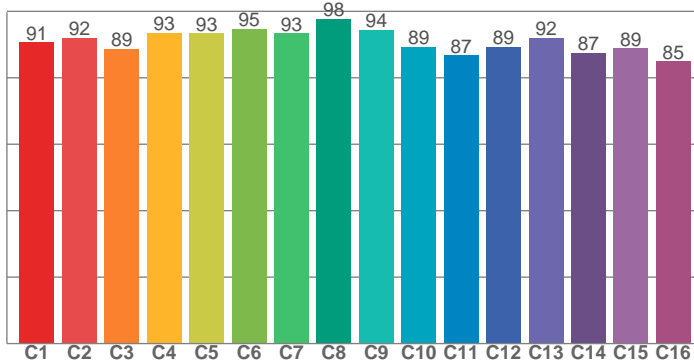


Power

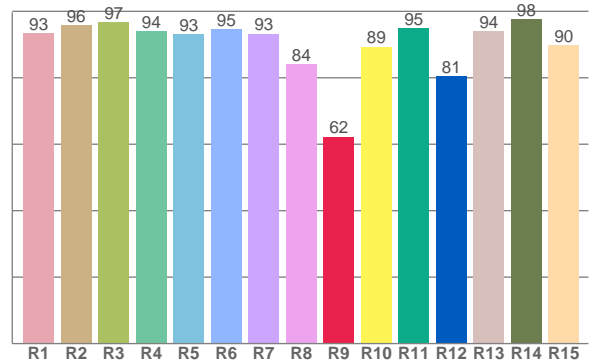




TM30: 91.1



CRI: 93.1 (R1-R8)



CRI R values, only R1-R8 are used to calculate final CRI value

R1	R2	R3	R4	R5	R6	R7	R8	R9	R10	R11	R12	R13	R14	R15
93.4	95.8	96.8	94.0	93.1	94.5	93.3	84.0	62.2	89.4	94.8	80.6	94.0	97.6	89.7

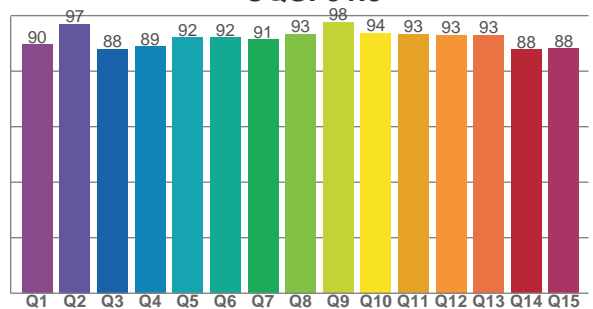
TM30 C values, 16 binned values out of total of 99 C values

C1	C2	C3	C4	C5	C6	C7	C8	C9	C10	C11	C12	C13	C14	C15	C16
90.7	92.0	88.7	93.4	93.4	94.7	93.4	97.7	94.5	89.3	86.7	89.4	92.1	87.4	88.8	85.0

CQS Q values

Q1	Q2	Q3	Q4	Q5	Q6	Q7	Q8	Q9	Q10	Q11	Q12	Q13	Q14	Q15
89.6	97.0	88.0	88.9	92.1	92.1	91.4	93.3	97.8	93.7	93.3	93.0	92.9	87.7	88.2

CQS: 91.3



Color parameters

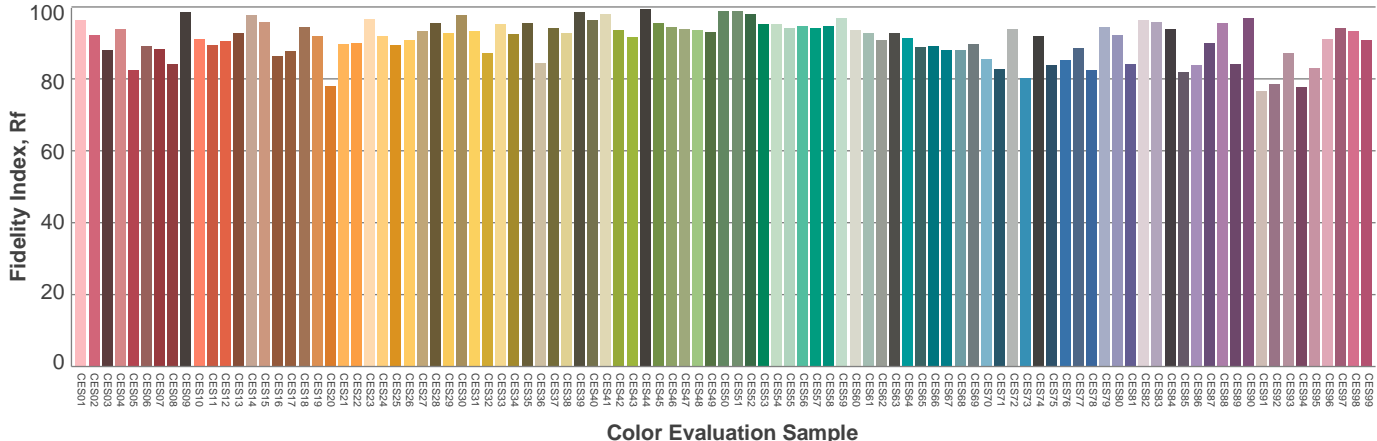
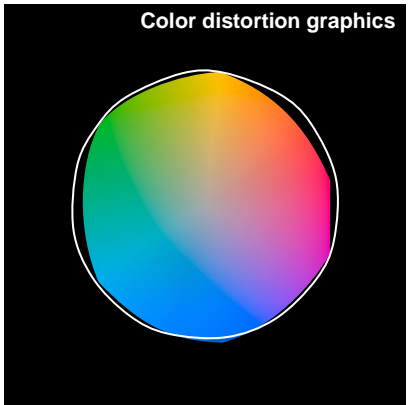
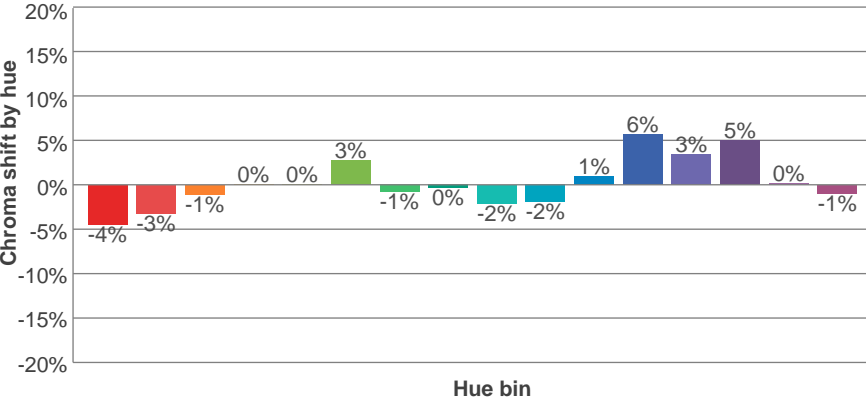
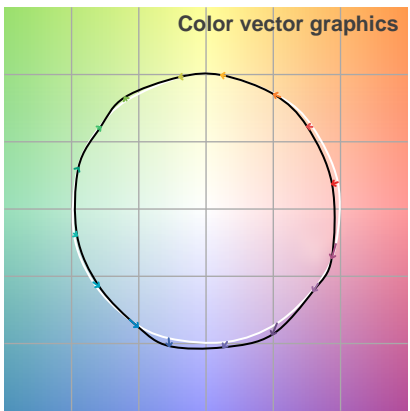
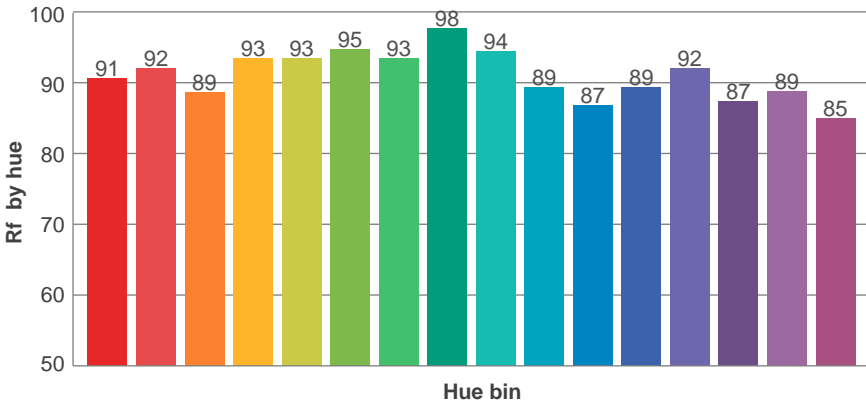
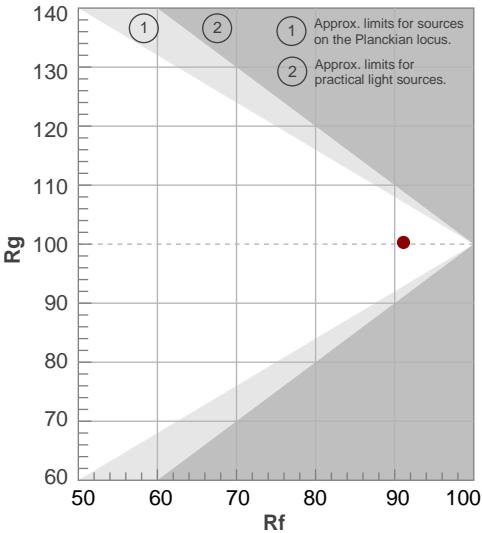
Color temperature	Color rendering index	Red component	Color fidelity	Color gamut	Color quality scale	Color coordinate cie 1931	Color coordinate cie 1931	Color coordinate	Color coordinate	Color deviation from black body
CCT	CRI	CRI R9	TM30 Rf	TM30 Rg	CQS	x	y	u	v	Δuv
3140 K	93.1	62.2	91.1	100.3	91.3	0.427	0.400	0.246	0.346	-0.0002

TM30 details

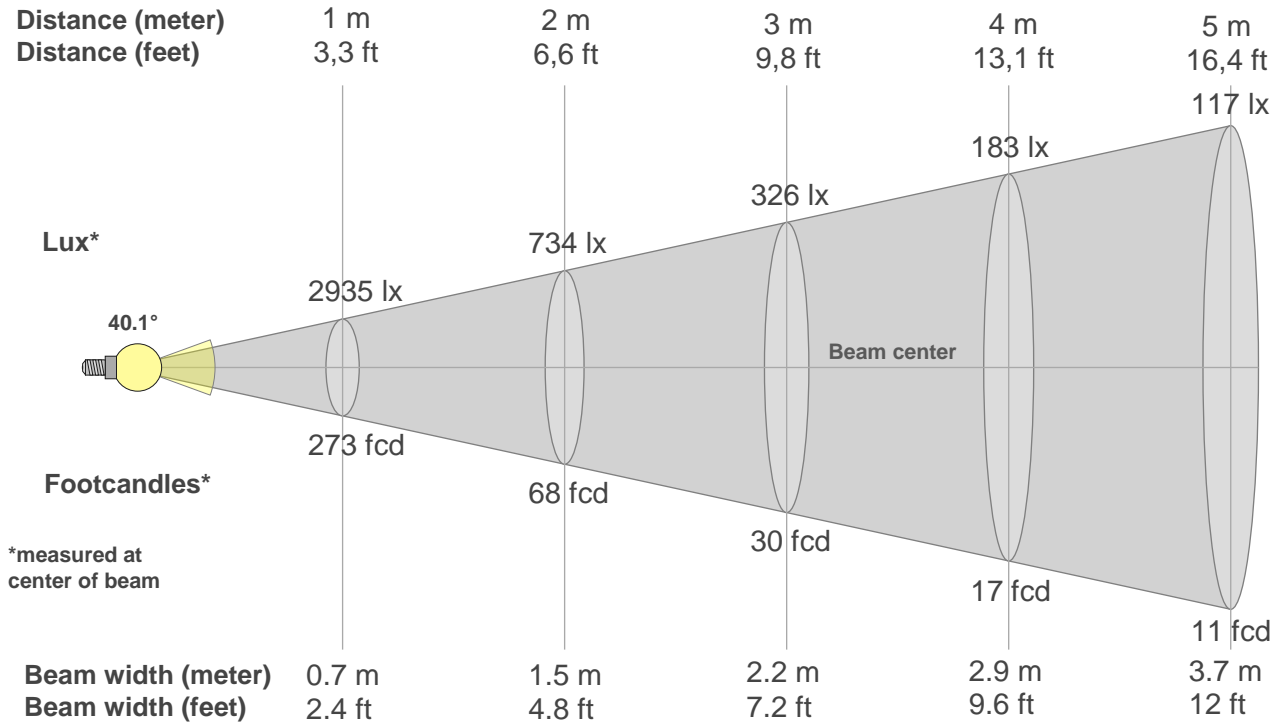
Rf 91.1
Fidelity index Rf

Rg 100.3
Gammut index Rg

Hue Bin	R _f	Graphic shifts (%)	
		Chroma	Hue
1	91	-4%	-1%
2	92	-3%	2%
3	89	-1%	5%
4	93	0%	3%
5	93	0%	2%
6	95	3%	0%
7	93	-1%	-2%
8	98	0%	-1%
9	94	-2%	2%
10	89	-2%	5%
11	87	1%	8%
12	89	6%	2%
13	92	3%	-3%
14	87	5%	-8%
15	89	0%	-6%
16	85	-1%	-11%



Beam details



Beam intensities from 1-20m

1m	2m	3m	4m	5m	6m	7m	8m	9m	10m	11m	12m	13m	14m	15m	16m	17m	18m	19m	20m
3.3ft	6.6ft	9.8ft	13.1ft	16.4ft	19.7ft	23ft	26.2ft	29.5ft	32.8ft	36.1ft	39.4ft	42.7ft	45.9ft	49.2ft	52.5ft	55.8ft	59.1ft	62.3ft	65.6ft
2935lx	734lx	326lx	183lx	117lx	82lx	60lx	46lx	36lx	29lx	24lx	20lx	17lx	15lx	13lx	11lx	10lx	9lx	8lx	7lx
272.7fcd	68.2fcd	30.3fcd	17fcd	10.9fcd	7.6fcd	5.6fcd	4.3fcd	3.4fcd	2.7fcd	2.3fcd	1.9fcd	1.6fcd	1.4fcd	1.2fcd	1.1fcd	0.9fcd	0.8fcd	0.8fcd	0.7fcd

Intensities in 0° c-plane

0°	2°	4°	6°	8°	10°	12°	14°	16°	18°	20°	22°	24°	26°	28°	30°	32°	34°	36°	38°
2935	2923	2869	2785	2672	2539	2384	2201	1988	1739	1476	1209	981	767	499	227	39	7	4	3
100%	100%	98%	95%	91%	86%	81%	75%	68%	59%	50%	41%	33%	26%	17%	8%	1%	0%	0%	0%

Intensities in 90° c-plane

0°	2°	4°	6°	8°	10°	12°	14°	16°	18°	20°	22°	24°	26°	28°	30°	32°	34°	36°	38°
2935	2915	2857	2768	2652	2517	2364	2186	1980	1737	1475	1208	985	783	533	257	53	8	4	3
100%	99%	97%	94%	90%	86%	81%	74%	67%	59%	50%	41%	34%	27%	18%	9%	2%	0%	0%	0%

Intensities in 180° c-plane

0°	2°	4°	6°	8°	10°	12°	14°	16°	18°	20°	22°	24°	26°	28°	30°	32°	34°	36°	38°
2935	2911	2850	2759	2648	2516	2356	2178	1971	1737	1476	1211	989	789	529	251	53	9	5	5
100%	99%	97%	94%	90%	86%	80%	74%	67%	59%	50%	41%	34%	27%	18%	9%	2%	0%	0%	0%

Intensities in 270° c-plane

0°	2°	4°	6°	8°	10°	12°	14°	16°	18°	20°	22°	24°	26°	28°	30°	32°	34°	36°	38°
2935	2917	2866	2781	2669	2534	2377	2193	1983	1741	1476	1207	981	766	498	211	35	7	4	3
100%	99%	98%	95%	91%	86%	81%	75%	68%	59%	50%	41%	33%	26%	17%	7%	1%	0%	0%	0%

Beam angle 50%	Field angle 10%	Cutoff angle 2,5%	Intensity ratio in 120° cone	Intensity ratio in 90° cone
40.1°	59.1°	63.1°	99.7%	99.5%

THIS PAGE INTENTIONALLY LEFT BLANK