

Light efficiency:



Light quality:



Color temperature:



Output: 436 lm

Peak: 745 cd

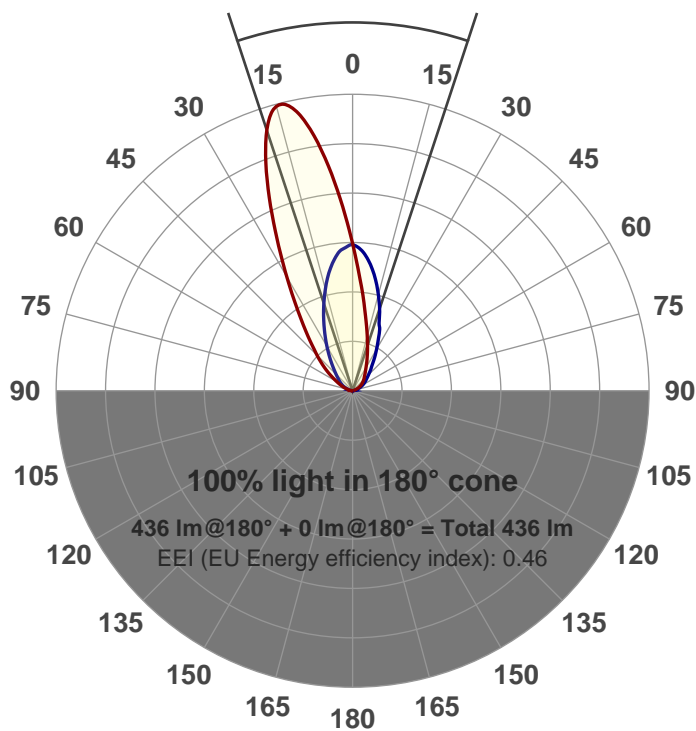
Power: 15.3 W

PF: 0.98



Beam angle

36.5°



Product name:

GRW-AD-SQ

Item number:

GRW-AD-SQ

Date and time:

11/8/2017 2:44:19 PM

Description:

LUM: 436

PPF: 8.17

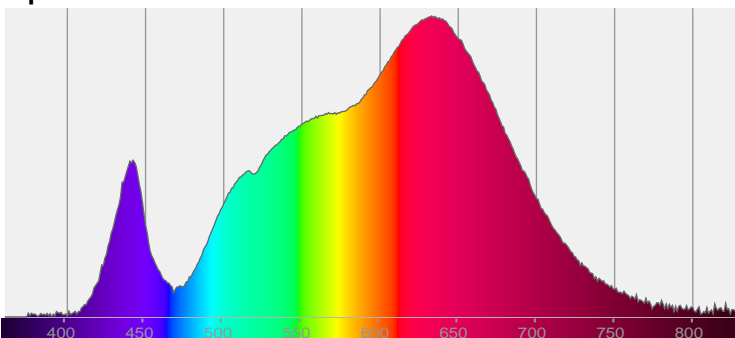


CIE 1931

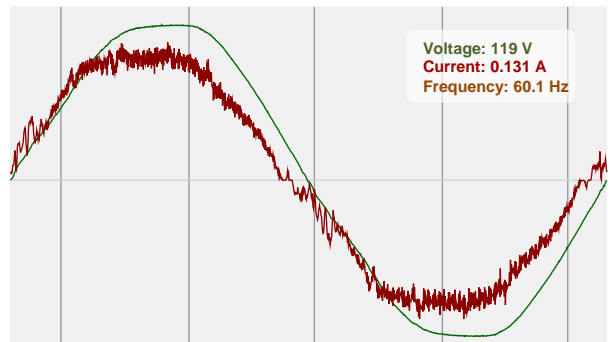
x: 0.435

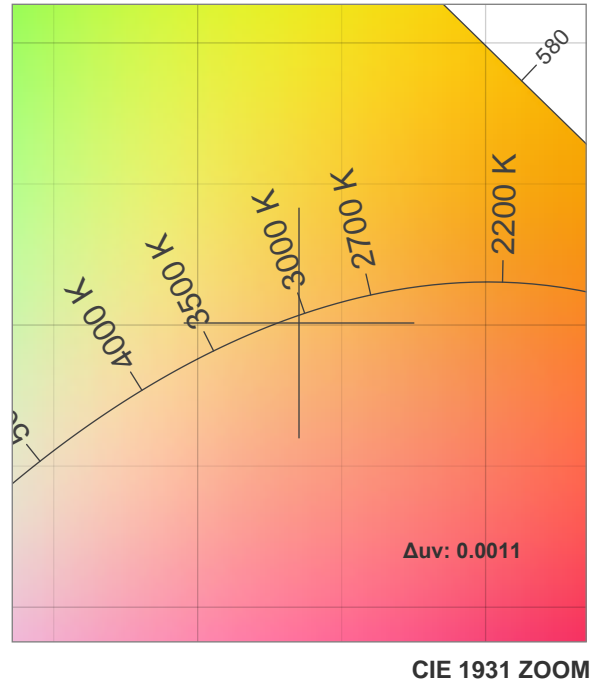
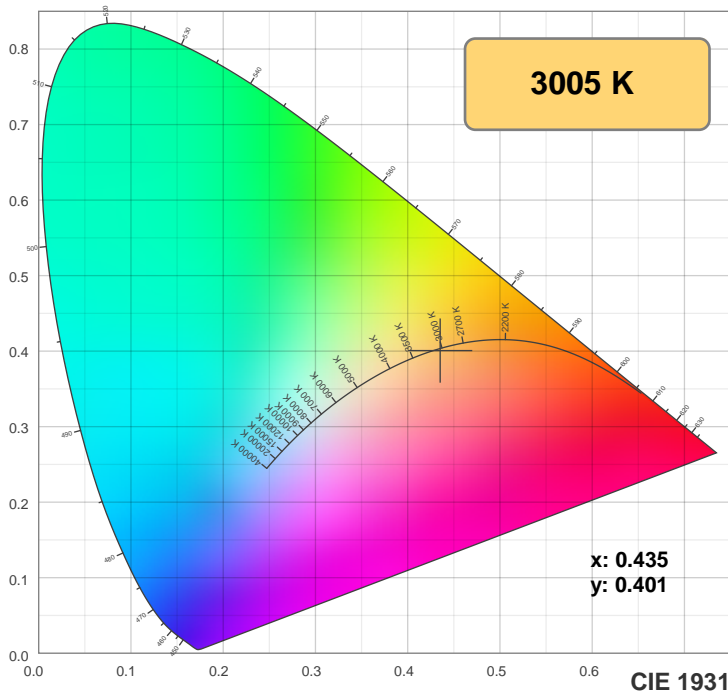
y: 0.401

Spectra

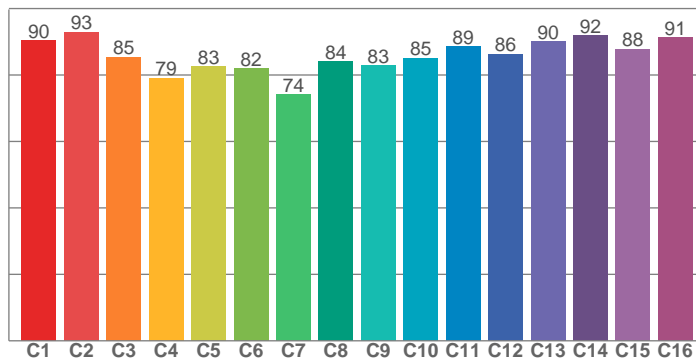


Power

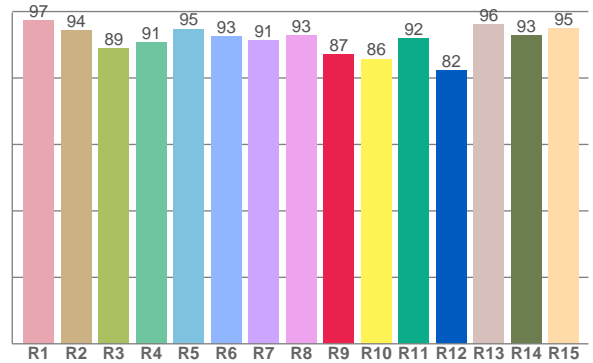




TM30: 86.1



CRI: 92.9 (R1-R8)



CRI R values, only R1-R8 are used to calculate final CRI value

R1	R2	R3	R4	R5	R6	R7	R8	R9	R10	R11	R12	R13	R14	R15
97.4	94.3	89.0	90.7	94.8	92.6	91.4	92.8	87.0	85.8	91.8	82.3	96.3	92.9	95.0

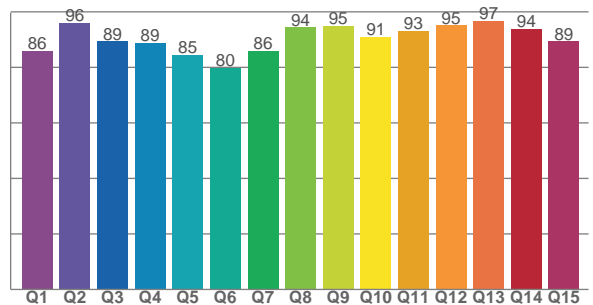
TM30 C values, 16 binned values out of total of 99 C values

C1	C2	C3	C4	C5	C6	C7	C8	C9	C10	C11	C12	C13	C14	C15	C16
90.3	93.0	85.4	79.1	82.5	82.0	74.1	84.0	82.9	85.1	88.5	86.3	90.2	92.0	87.8	91.2

CQS Q values

Q1	Q2	Q3	Q4	Q5	Q6	Q7	Q8	Q9	Q10	Q11	Q12	Q13	Q14	Q15
86.0	95.9	89.3	88.8	84.5	79.8	85.8	94.4	94.9	90.8	93.1	95.1	96.7	93.8	89.3

CQS: 89.2



Color parameters

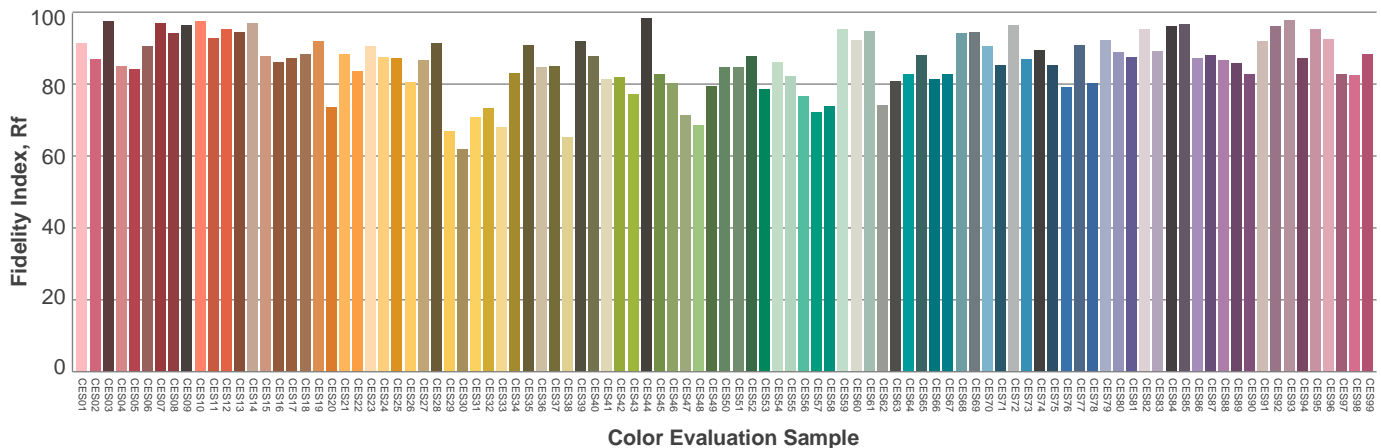
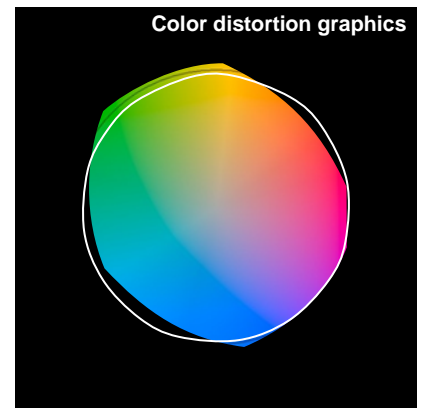
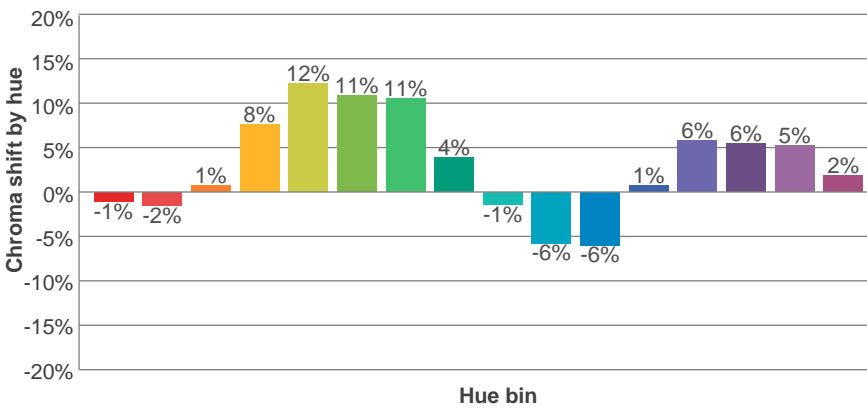
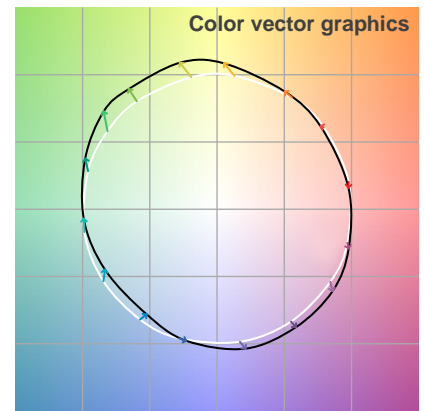
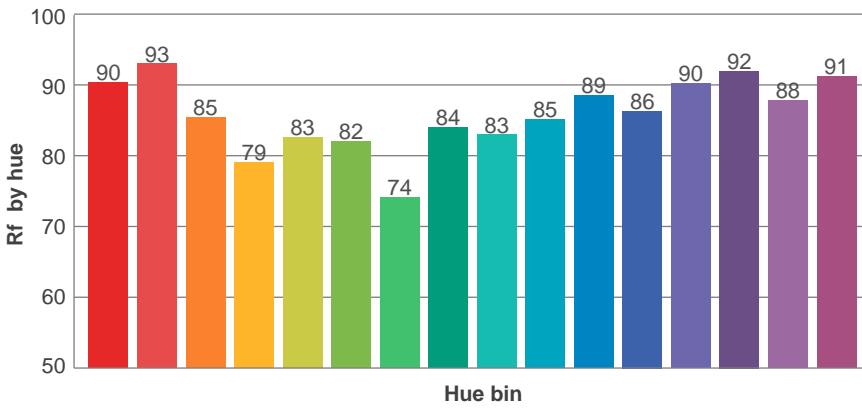
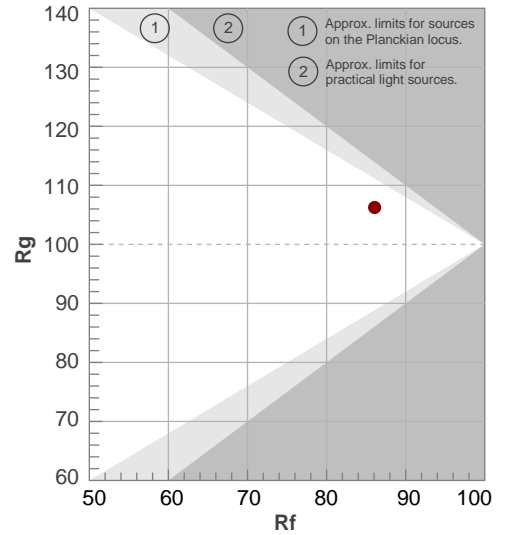
Color temperature	Color rendering index	Red component	Color fidelity	Color gamut	Color quality scale	Color coordinate cie 1931	Color coordinate cie 1931	Color coordinate	Color coordinate	Color deviation from black body
CCT	CRI	CRI R9	TM30 Rf	TM30 Rg	CQS	x	y	u	v	Δuv
3005 K	92.9	87.0	86.1	106.3	89.2	0.435	0.401	0.251	0.347	0.0011

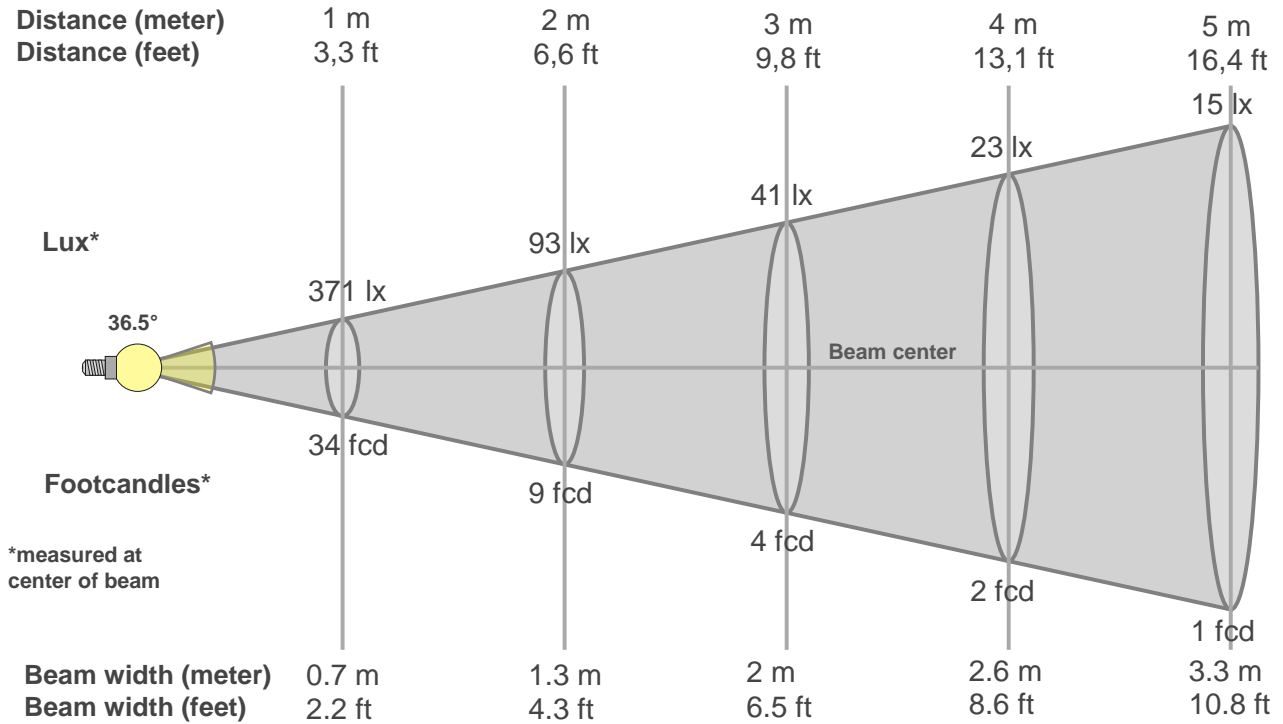
TM30 details

Rf 86.1
Fidelity index Rf

Rg 106.3
Gammut index Rg

Hue Bin	R _f	Graphic shifts (%)	
		Chroma	Hue
1	90	-1%	-4%
2	93	-2%	2%
3	85	1%	7%
4	79	8%	9%
5	83	12%	6%
6	82	11%	0%
7	74	11%	-11%
8	84	4%	-9%
9	83	-1%	-10%
10	85	-6%	-7%
11	89	-6%	2%
12	86	1%	5%
13	90	6%	3%
14	92	6%	1%
15	88	5%	-5%
16	91	2%	-4%





Beam intensities from 1-20m

1m	2m	3m	4m	5m	6m	7m	8m	9m	10m	11m	12m	13m	14m	15m	16m	17m	18m	19m	20m
3.3ft	6.6ft	9.8ft	13.1ft	16.4ft	19.7ft	23ft	26.2ft	29.5ft	32.8ft	36.1ft	39.4ft	42.7ft	45.9ft	49.2ft	52.5ft	55.8ft	59.1ft	62.3ft	65.6ft
371lx	93lx	41lx	23lx	15lx	10lx	8lx	6lx	5lx	4lx	3lx	3lx	2lx	2lx	2lx	1lx	1lx	1lx	1lx	1lx
34.5fcd	8.6fcd	3.8fcd	2.2fcd	1.4fcd	1fcd	0.7fcd	0.5fcd	0.4fcd	0.3fcd	0.3fcd	0.2fcd	0.2fcd	0.2fcd	0.2fcd	0.1fcd	0.1fcd	0.1fcd	0.1fcd	0.1fcd

Intensities in 0° c-plane

0°	2°	4°	6°	8°	10°	12°	14°	16°	18°	20°	22°	24°	26°	28°	30°	32°	34°	36°	38°
371	432	497	566	632	688	726	743	735	697	641	577	510	443	384	334	290	252	220	193
100%	116%	134%	153%	170%	185%	196%	200%	198%	188%	173%	156%	137%	120%	104%	90%	78%	68%	59%	52%

Intensities in 90° c-plane

0°	2°	4°	6°	8°	10°	12°	14°	16°	18°	20°	22°	24°	26°	28°	30°	32°	34°	36°	38°
371	365	359	349	334	317	297	277	255	235	215	195	177	160	145	130	117	105	94	85
100%	98%	97%	94%	90%	85%	80%	75%	69%	63%	58%	53%	48%	43%	39%	35%	31%	28%	25%	23%

Intensities in 180° c-plane

0°	2°	4°	6°	8°	10°	12°	14°	16°	18°	20°	22°	24°	26°	28°	30°	32°	34°	36°	38°
371	323	280	246	215	190	169	151	136	122	110	100	90	82	74	68	62	58	53	50
100%	87%	75%	66%	58%	51%	46%	41%	37%	33%	30%	27%	24%	22%	20%	18%	17%	16%	14%	13%

Intensities in 270° c-plane

0°	2°	4°	6°	8°	10°	12°	14°	16°	18°	20°	22°	24°	26°	28°	30°	32°	34°	36°	38°
371	363	353	339	322	303	283	262	241	220	199	180	168	150	135	121	109	98	87	79
100%	98%	95%	91%	87%	82%	76%	71%	65%	59%	54%	49%	45%	40%	36%	33%	29%	26%	24%	21%

Beam angle 50%	Field angle 10%	Cutoff angle 2,5%	Intensity ratio in 120° cone	Intensity ratio in 90° cone
36.5°	96.7°	140.4°	92.5%	77.9%

THIS PAGE INTENTIONALLY LEFT BLANK