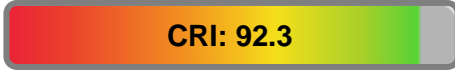


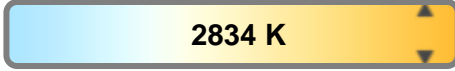
**Light efficiency:**



**Light quality:**



**Color temperature:**



**Output: 545 lm**

**Peak: 346 cd**

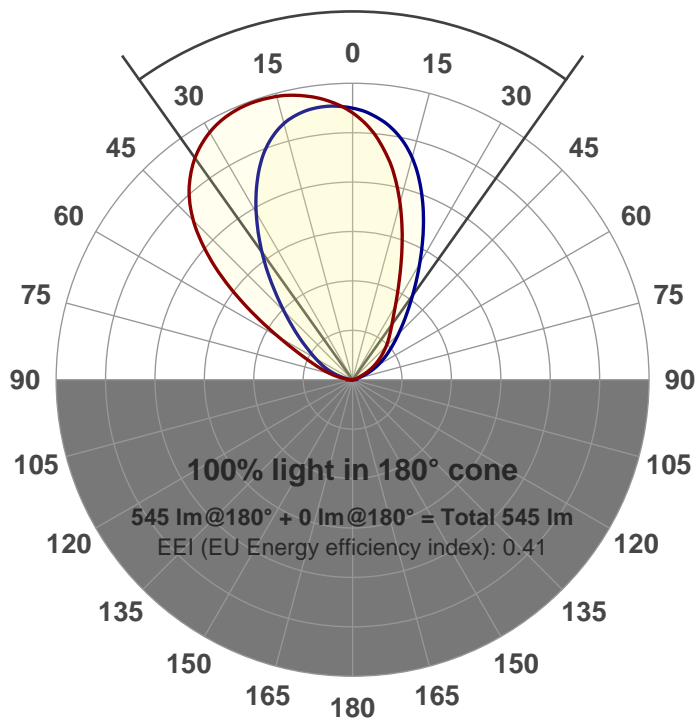
**Power: 14.5 W**

**PF: 0.97**



**Beam angle**

**70.8°**



**Product name:**

**GRWW-CZ14-RD-27-350**

**Item number:**

**GRWW-CZ14-RD-27-350**

**Date and time:**

**1/15/2018 3:24:33 PM**

**Description:**

**LUM: 545**

**PPF: 9.86**

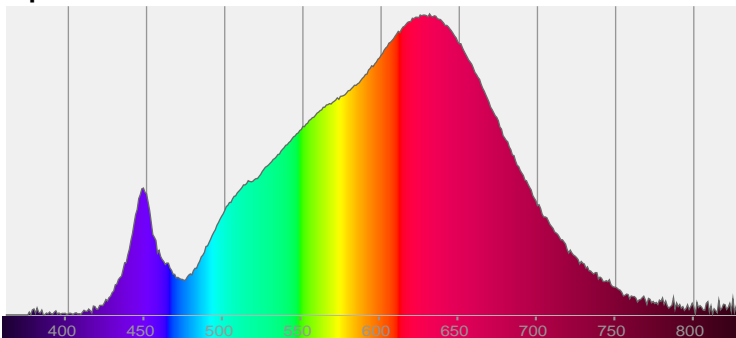


**CIE 1931**

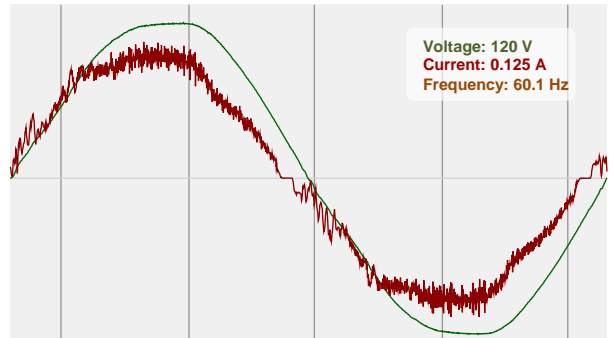
**x: 0.453**

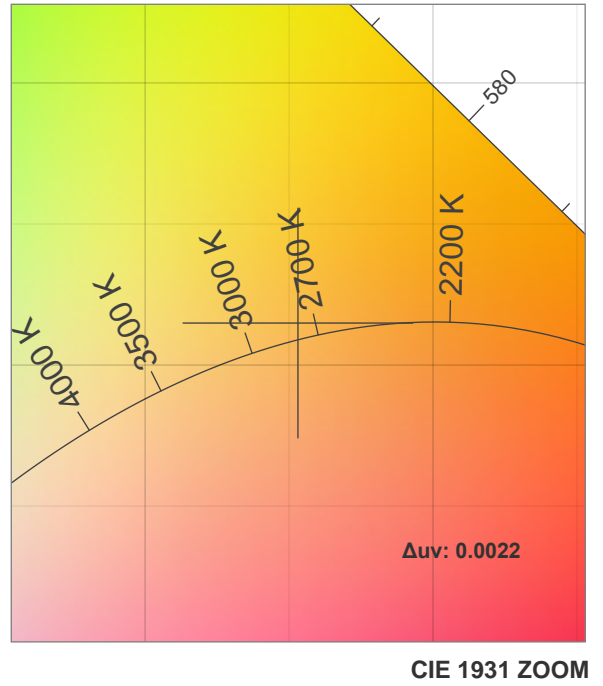
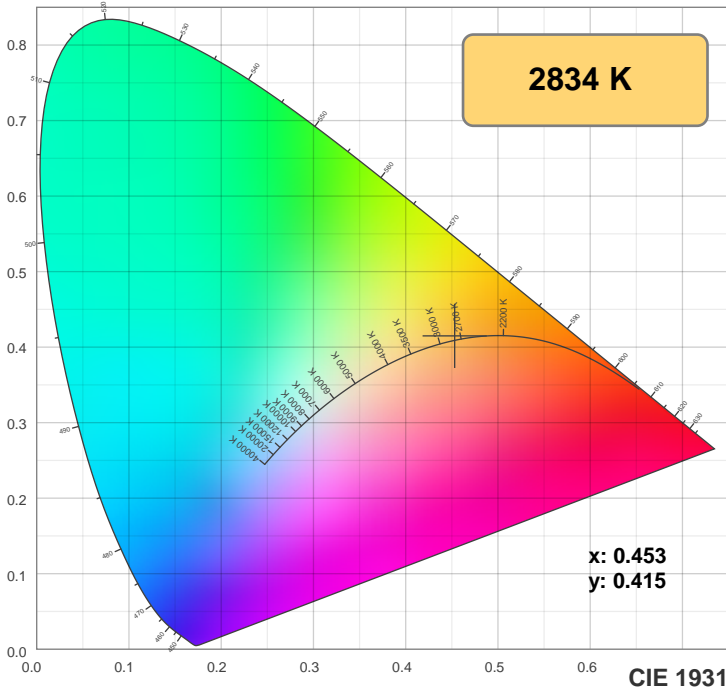
**y: 0.415**

**Spectra**



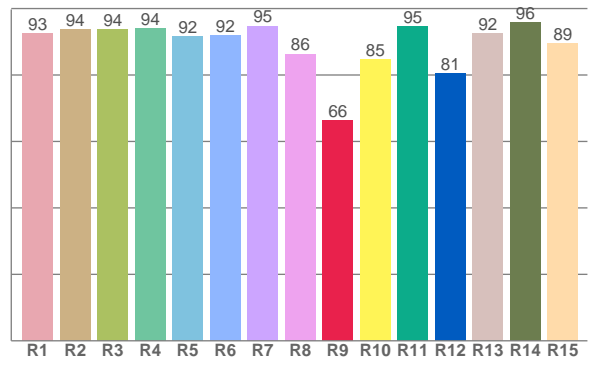
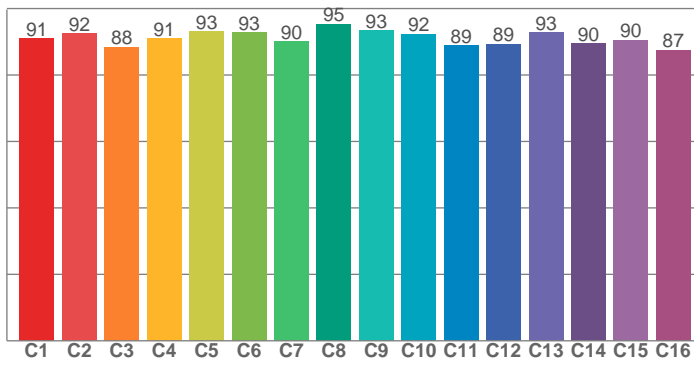
**Power**





**TM30: 91.2**

**CRI: 92.3 (R1-R8)**



CRI R values, only R1-R8 are used to calculate final CRI value

R1	R2	R3	R4	R5	R6	R7	R8	R9	R10	R11	R12	R13	R14	R15
92.5	93.7	93.7	94.0	91.6	91.9	94.8	86.3	66.5	84.8	94.7	80.5	92.4	95.7	89.4

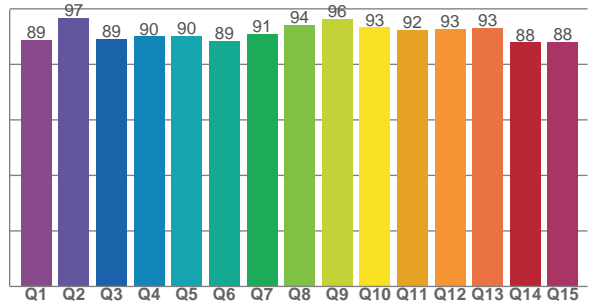
TM30 C values, 16 binned values out of total of 99 C values

C1	C2	C3	C4	C5	C6	C7	C8	C9	C10	C11	C12	C13	C14	C15	C16
91.1	92.5	88.5	91.0	93.0	92.8	90.1	95.3	93.5	92.3	88.8	89.3	92.8	89.6	90.5	87.5

CQS Q values

Q1	Q2	Q3	Q4	Q5	Q6	Q7	Q8	Q9	Q10	Q11	Q12	Q13	Q14	Q15
88.7	96.7	89.3	90.1	90.1	88.5	90.9	94.2	96.4	93.3	92.4	92.7	93.1	87.9	88.2

**CQS: 90.9**



## Color parameters

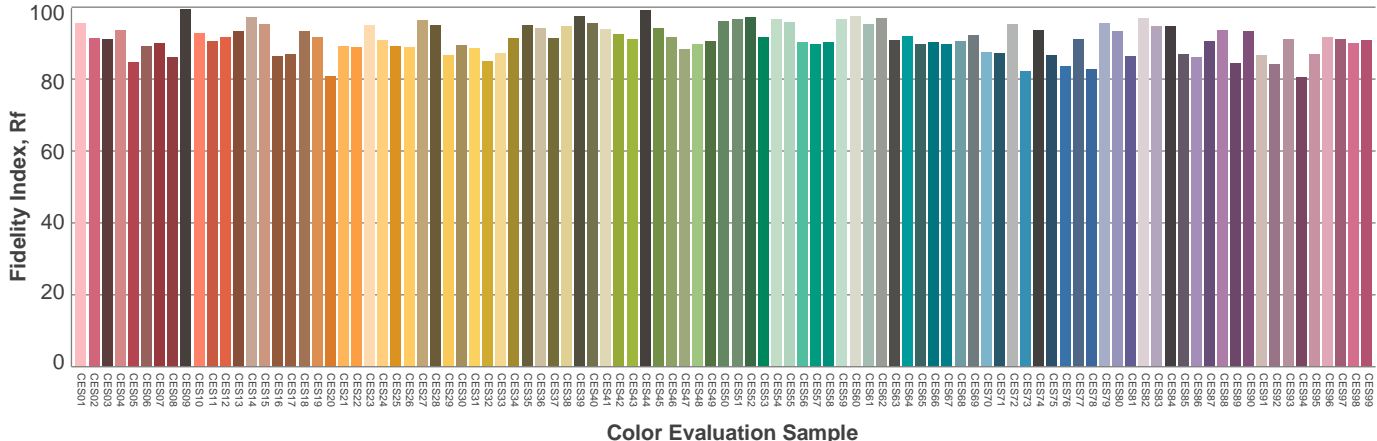
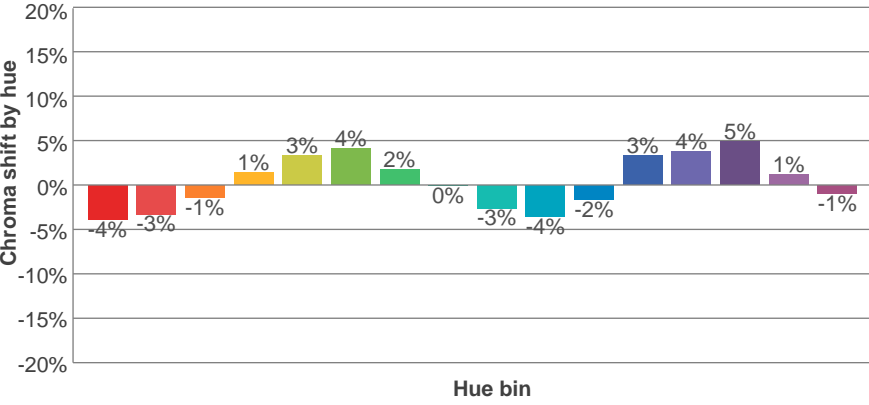
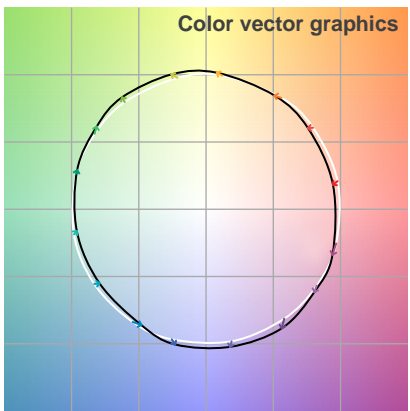
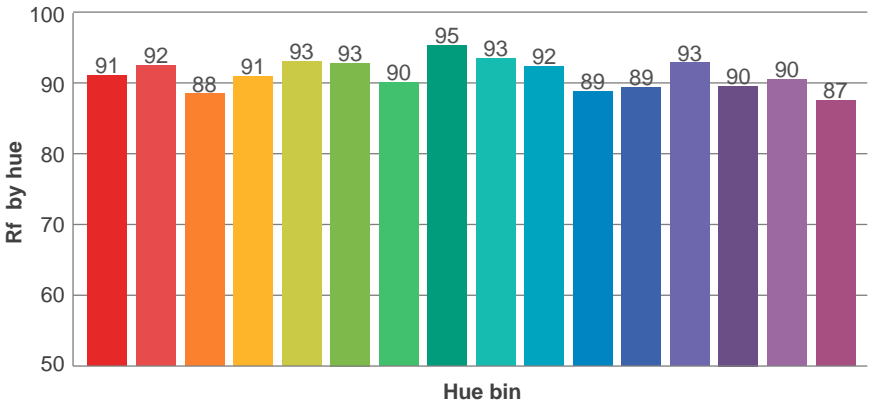
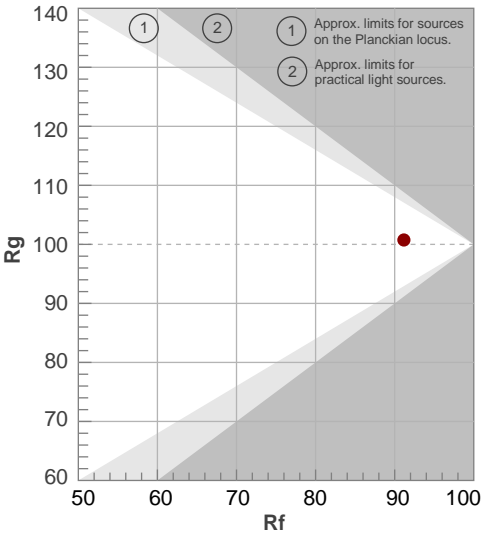
Color temperature	Color rendering index	Red component	Color fidelity	Color gamut	Color quality scale	Color coordinate cie 1931	Color coordinate cie 1931	Color coordinate	Color coordinate	Color deviation from black body
CCT	CRI	CRI R9	TM30 Rf	TM30 Rg	CQS	x	y	u	v	Δuv
2834 K	92.3	66.5	91.2	100.7	90.9	0.453	0.415	0.256	0.352	0.0022

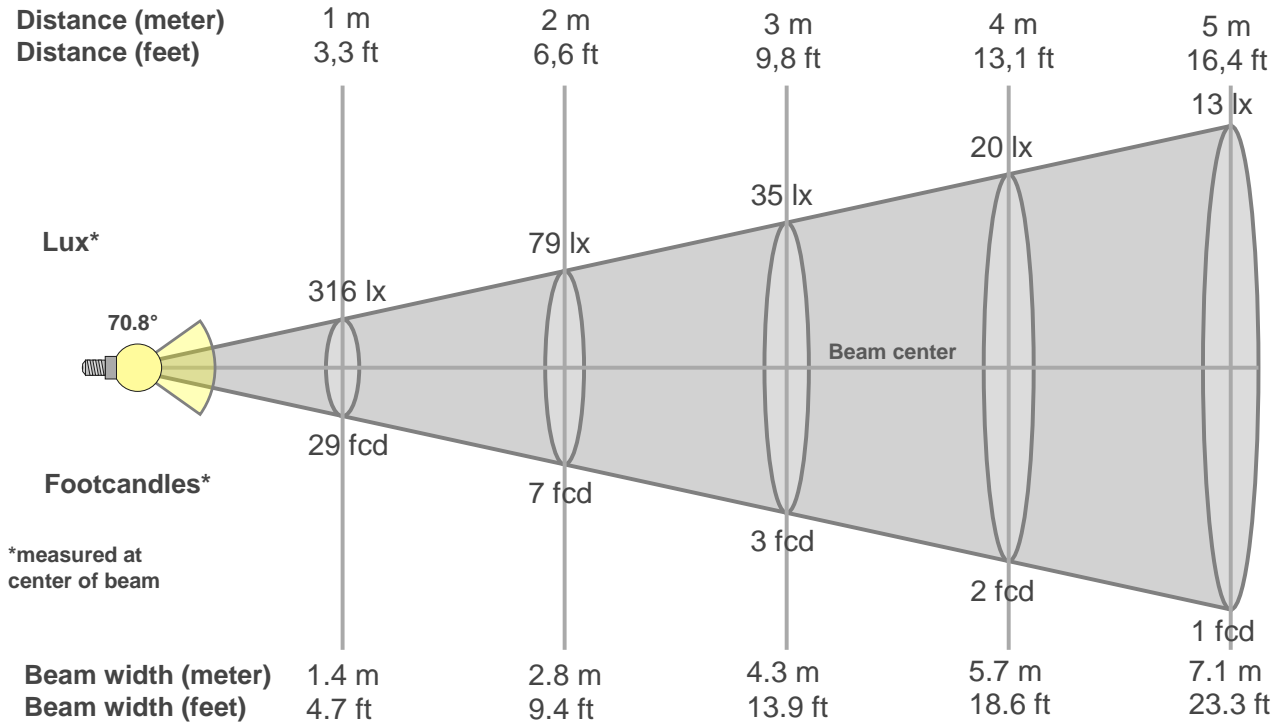
# TM30 details

**Rf 91.2**  
Fidelity index Rf

**Rg 100.7**  
Gammut index Rg

Hue Bin	R <sub>f</sub>	Graphic shifts (%)	
		Chroma	Hue
1	91	-4%	-2%
2	92	-3%	2%
3	88	-1%	5%
4	91	1%	5%
5	93	3%	4%
6	93	4%	0%
7	90	2%	-5%
8	95	0%	-3%
9	93	-3%	-2%
10	92	-4%	2%
11	89	-2%	7%
12	89	3%	3%
13	93	4%	-2%
14	90	5%	-5%
15	90	1%	-5%
16	87	-1%	-9%





### Beam intensities from 1-20m

1m	2m	3m	4m	5m	6m	7m	8m	9m	10m	11m	12m	13m	14m	15m	16m	17m	18m	19m	20m
3.3ft	6.6ft	9.8ft	13.1ft	16.4ft	19.7ft	23ft	26.2ft	29.5ft	32.8ft	36.1ft	39.4ft	42.7ft	45.9ft	49.2ft	52.5ft	55.8ft	59.1ft	62.3ft	65.6ft
316lx	79lx	35lx	20lx	13lx	9lx	6lx	5lx	4lx	3lx	3lx	2lx	2lx	2lx	1lx	1lx	1lx	1lx	1lx	1lx
29.4fcd	7.3fcd	3.3fcd	1.8fcd	1.2fcd	0.8fcd	0.6fcd	0.5fcd	0.4fcd	0.3fcd	0.2fcd	0.2fcd	0.2fcd	0.2fcd	0.1fcd	0.1fcd	0.1fcd	0.1fcd	0.1fcd	0.1fcd

### Intensities in 0° c-plane

0°	5°	10°	15°	20°	25°	30°	35°	40°	45°	50°	55°	60°	65°	70°	75°	80°	85°	90°	95°
316	329	339	344	346	344	335	321	298	264	216	157	100	63	42	27	14	5	1	0
100%	104%	107%	109%	109%	109%	106%	102%	94%	84%	68%	50%	32%	20%	13%	8%	4%	2%	0%	0%

### Intensities in 90° c-plane

0°	5°	10°	15°	20°	25°	30°	35°	40°	45°	50°	55°	60°	65°	70°	75°	80°	85°	90°	95°
316	323	320	311	293	263	226	187	148	114	87	66	51	38	26	15	6	2	1	0
100%	102%	101%	99%	93%	83%	72%	59%	47%	36%	28%	21%	16%	12%	8%	5%	2%	1%	0%	0%

### Intensities in 180° c-plane

0°	5°	10°	15°	20°	25°	30°	35°	40°	45°	50°	55°	60°	65°	70°	75°	80°	85°	90°	95°
316	290	257	215	170	130	101	81	67	56	45	34	23	13	7	5	2	1	1	0
100%	92%	81%	68%	54%	41%	32%	26%	21%	18%	14%	11%	7%	4%	2%	1%	1%	0%	0%	0%

### Intensities in 270° c-plane

0°	5°	10°	15°	20°	25°	30°	35°	40°	45°	50°	55°	60°	65°	70°	75°	80°	85°	90°	95°
316	310	295	270	236	197	158	124	97	76	60	47	34	22	12	5	2	1	0	0
100%	98%	93%	85%	75%	62%	50%	39%	31%	24%	19%	15%	11%	7%	4%	2%	1%	0%	0%	0%

<b>Beam angle 50%</b>	<b>Field angle 10%</b>	<b>Cutoff angle 2,5%</b>	<b>Intensity ratio in 120° cone</b>	<b>Intensity ratio in 90° cone</b>
<b>70.8°</b>	<b>127.4°</b>	<b>150.9°</b>	<b>90.6%</b>	<b>69.9%</b>



THIS PAGE INTENTIONALLY LEFT BLANK