

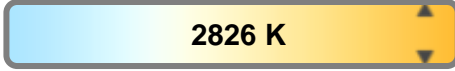
Light efficiency:



Light quality:



Color temperature:



Output: 574 lm

Peak: 378 cd

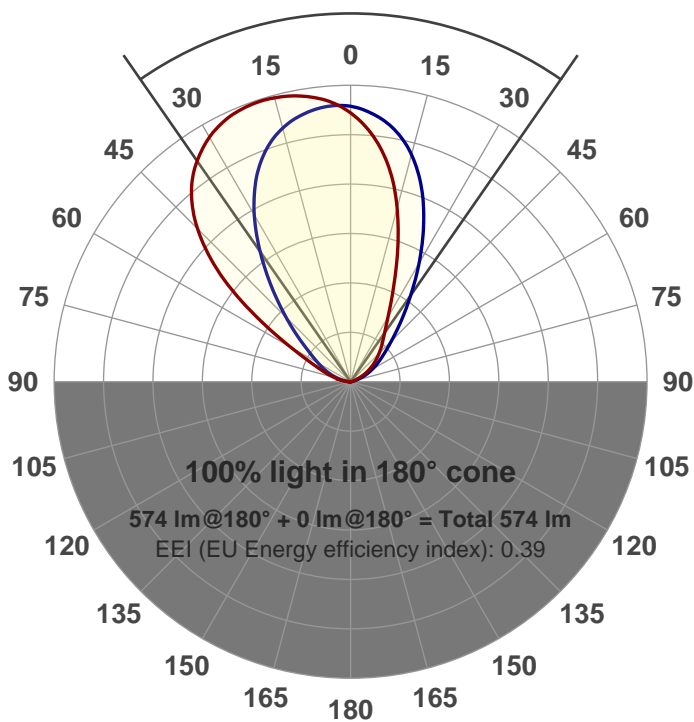
Power: 14.6 W

PF: 0.97



Beam angle

69.6°



Product name:

GRWW-CZ14-SQ-27-350

Item number:

GRWW-CZ14-SQ-27-350

Date and time:

1/15/2018 12:59:23 PM

Description:

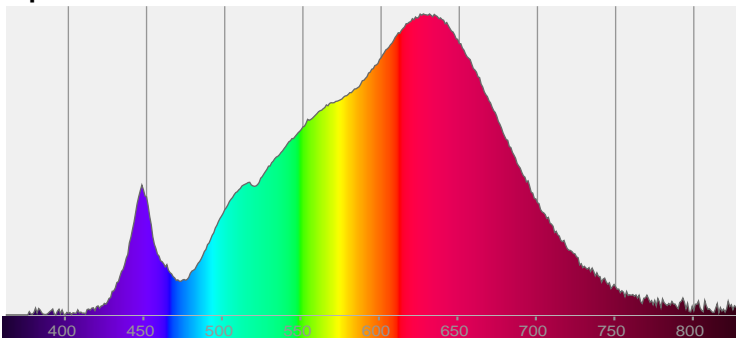
LUM: 574

PPF: 10.4

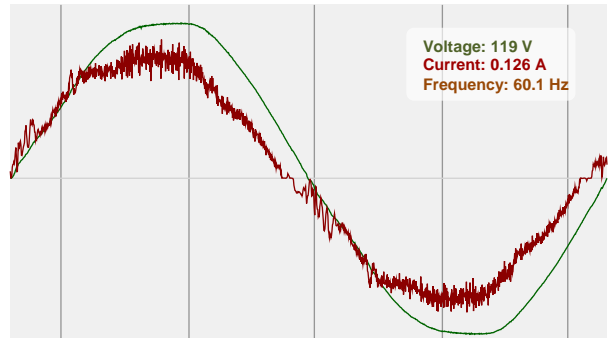


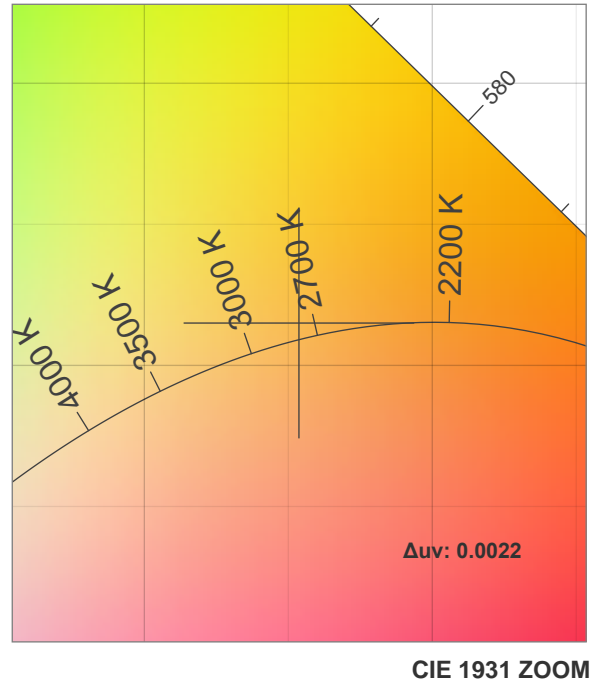
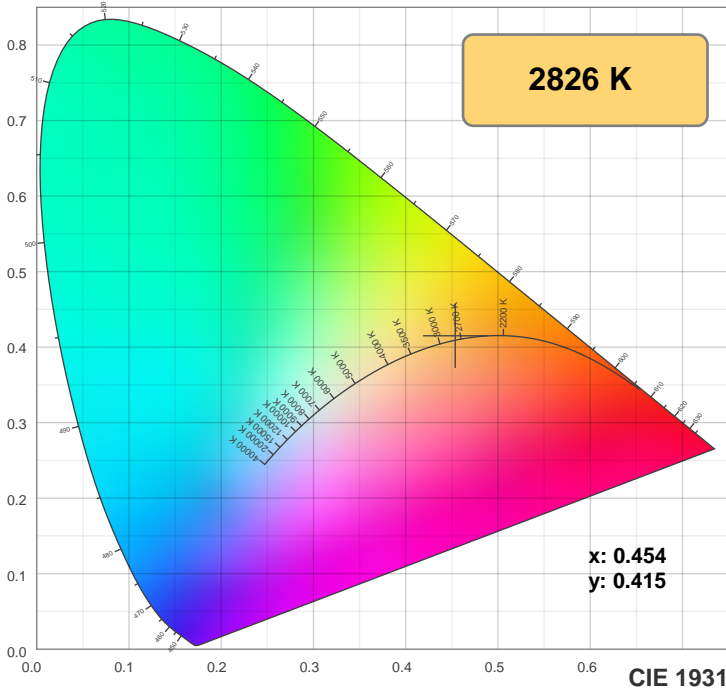
CIE 1931
x: 0.454
y: 0.415

Spectra



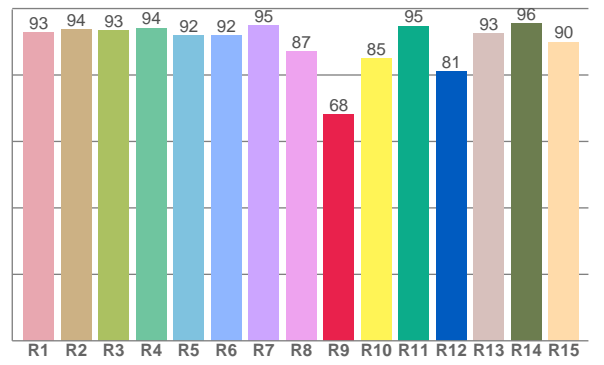
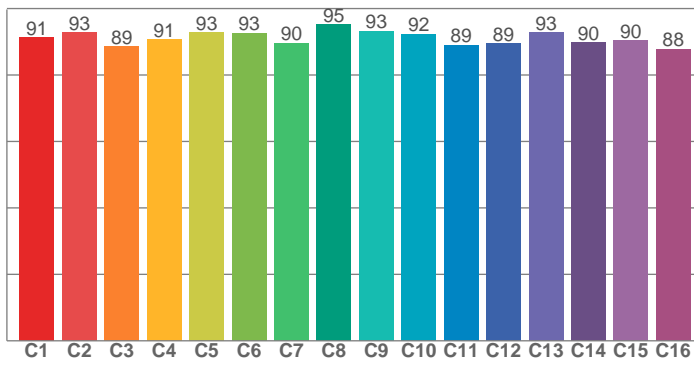
Power





TM30: 91.2

CRI: 92.5 (R1-R8)



CRI R values, only R1-R8 are used to calculate final CRI value

R1	R2	R3	R4	R5	R6	R7	R8	R9	R10	R11	R12	R13	R14	R15
92.8	93.8	93.4	94.2	91.9	91.9	95.0	87.1	68.1	84.9	94.8	81.0	92.6	95.5	90.0

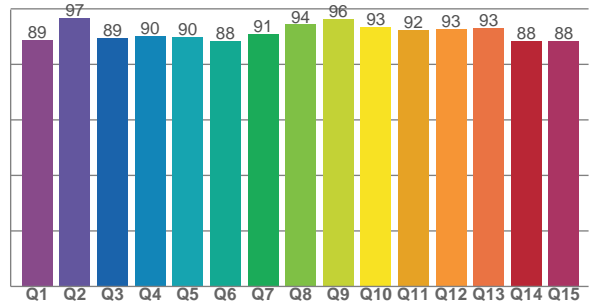
TM30 C values, 16 binned values out of total of 99 C values

C1	C2	C3	C4	C5	C6	C7	C8	C9	C10	C11	C12	C13	C14	C15	C16
91.2	92.8	88.6	90.8	92.8	92.6	89.7	95.1	93.2	92.4	89.1	89.4	92.9	89.8	90.4	87.9

CQS Q values

Q1	Q2	Q3	Q4	Q5	Q6	Q7	Q8	Q9	Q10	Q11	Q12	Q13	Q14	Q15
88.7	96.7	89.5	90.2	90.0	88.4	91.0	94.4	96.3	93.3	92.4	92.8	93.3	88.3	88.5

CQS: 91.0



Color parameters

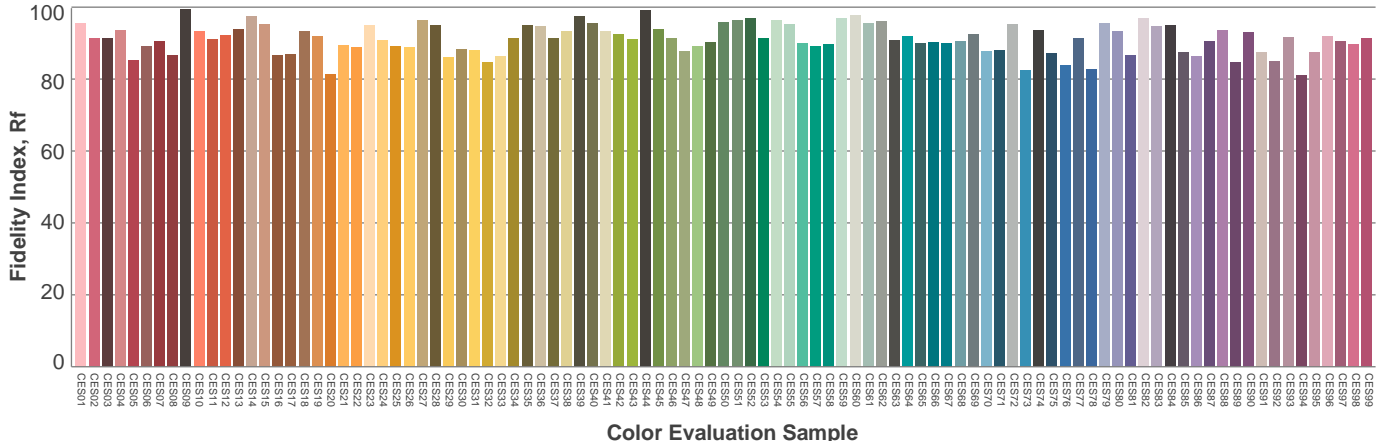
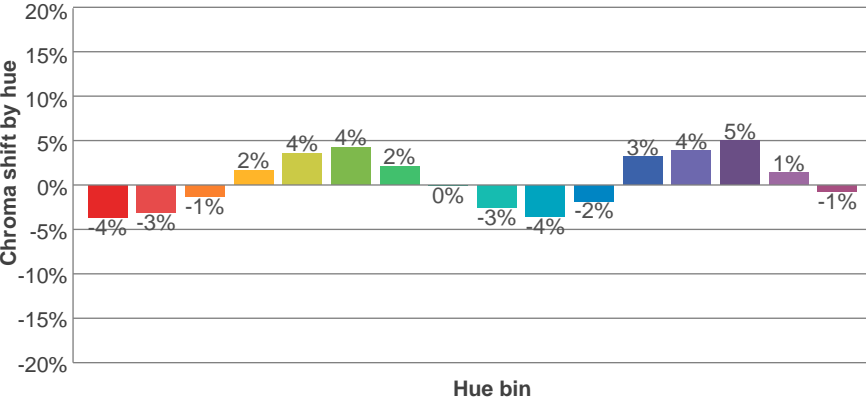
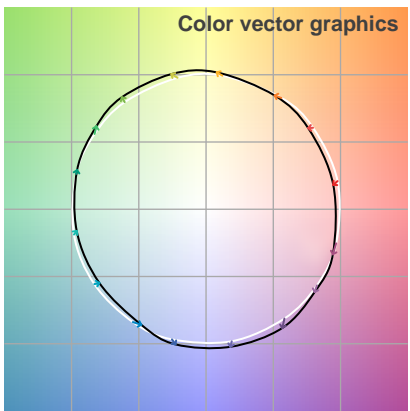
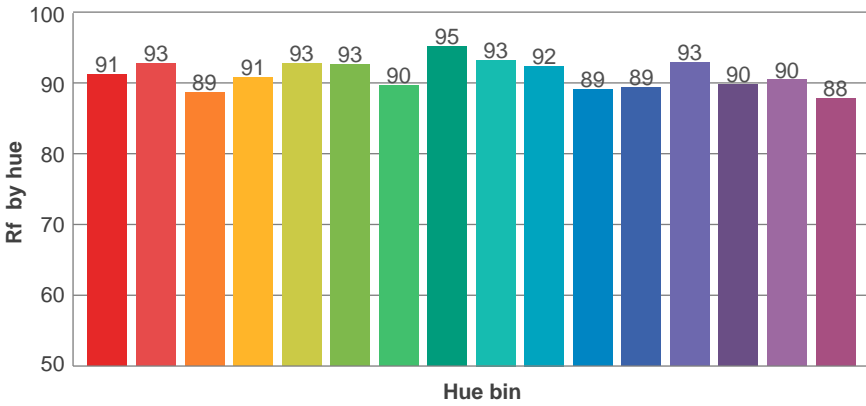
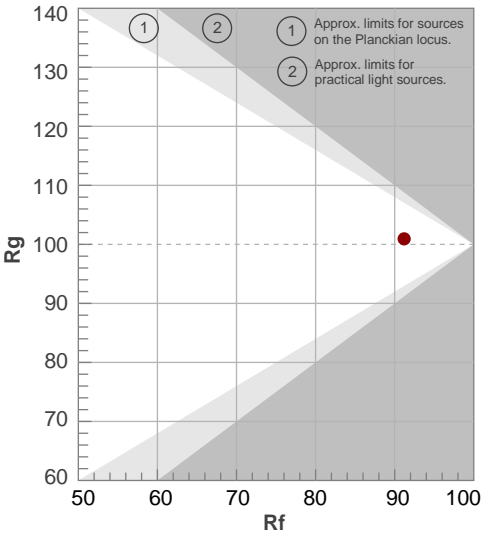
Color temperature	Color rendering index	Red component	Color fidelity	Color gamut	Color quality scale	Color coordinate cie 1931	Color coordinate cie 1931	Color coordinate	Color coordinate	Color deviation from black body
CCT	CRI	CRI R9	TM30 Rf	TM30 Rg	CQS	x	y	u	v	Δuv
2826 K	92.5	68.1	91.2	100.9	91.0	0.454	0.415	0.257	0.352	0.0022

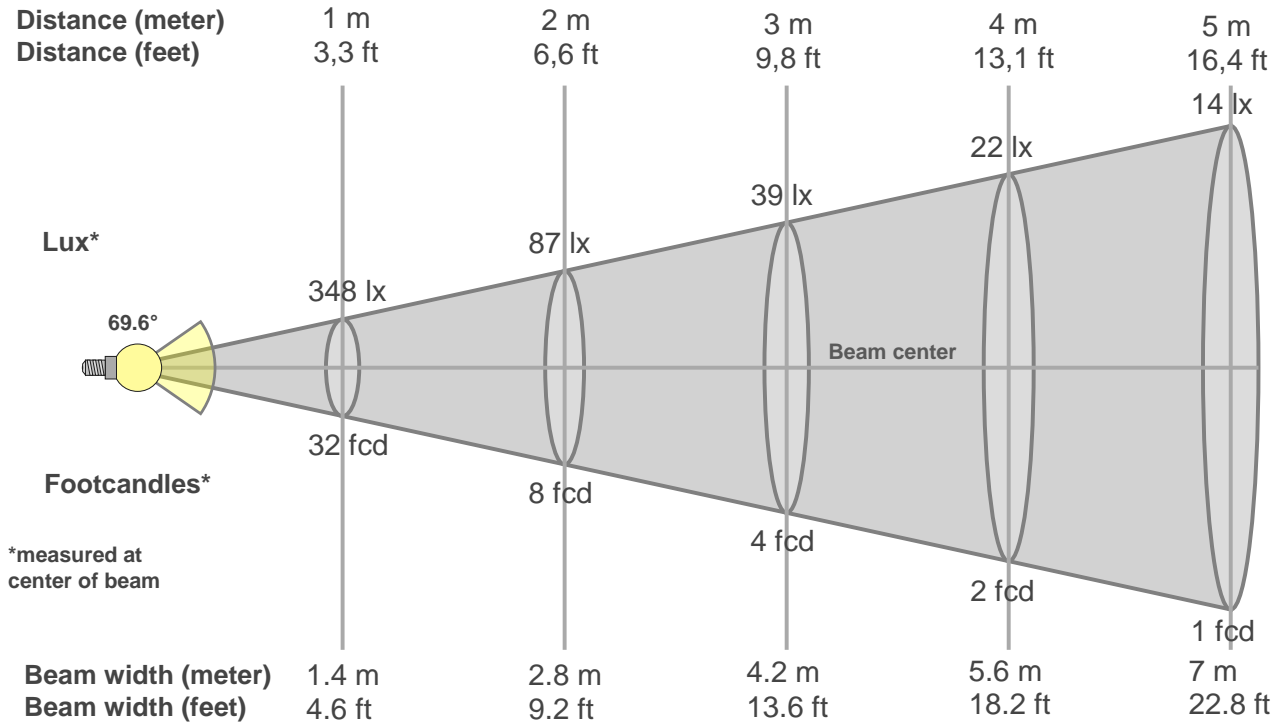
TM30 details

Rf 91.2
Fidelity index Rf

Rg 100.9
Gammut index Rg

Hue Bin	R _f	Graphic shifts (%)	
		Chroma	Hue
1	91	-4%	-2%
2	93	-3%	2%
3	89	-1%	5%
4	91	2%	5%
5	93	4%	4%
6	93	4%	0%
7	90	2%	-5%
8	95	0%	-3%
9	93	-3%	-2%
10	92	-4%	1%
11	89	-2%	6%
12	89	3%	3%
13	93	4%	-2%
14	90	5%	-5%
15	90	1%	-5%
16	88	-1%	-8%





Beam intensities from 1-20m

1m	2m	3m	4m	5m	6m	7m	8m	9m	10m	11m	12m	13m	14m	15m	16m	17m	18m	19m	20m
3.3ft	6.6ft	9.8ft	13.1ft	16.4ft	19.7ft	23ft	26.2ft	29.5ft	32.8ft	36.1ft	39.4ft	42.7ft	45.9ft	49.2ft	52.5ft	55.8ft	59.1ft	62.3ft	65.6ft
348lx	87lx	39lx	22lx	14lx	10lx	7lx	5lx	4lx	3lx	3lx	2lx	2lx	2lx	2lx	1lx	1lx	1lx	1lx	1lx
32.4fcd	8.1fcd	3.6fcd	2fcd	1.3fcd	0.9fcd	0.7fcd	0.5fcd	0.4fcd	0.3fcd	0.3fcd	0.2fcd	0.2fcd	0.2fcd	0.2fcd	0.1fcd	0.1fcd	0.1fcd	0.1fcd	0.1fcd

Intensities in 0° c-plane

0°	5°	10°	15°	20°	25°	30°	35°	40°	45°	50°	55°	60°	65°	70°	75°	80°	85°	90°	95°
348	363	373	377	378	374	363	344	318	278	223	153	90	54	35	23	13	5	1	0
100%	104%	107%	108%	108%	107%	104%	99%	91%	80%	64%	44%	26%	15%	10%	7%	4%	1%	0%	0%

Intensities in 90° c-plane

0°	5°	10°	15°	20°	25°	30°	35°	40°	45°	50°	55°	60°	65°	70°	75°	80°	85°	90°	95°
348	355	349	337	317	287	247	202	157	118	86	63	48	37	26	16	8	3	1	0
100%	102%	100%	97%	91%	82%	71%	58%	45%	34%	25%	18%	14%	11%	8%	5%	2%	1%	0%	0%

Intensities in 180° c-plane

0°	5°	10°	15°	20°	25°	30°	35°	40°	45°	50°	55°	60°	65°	70°	75°	80°	85°	90°	95°
348	318	281	231	176	129	96	76	63	52	42	32	23	13	7	4	2	1	0	0
100%	91%	81%	66%	51%	37%	28%	22%	18%	15%	12%	9%	6%	4%	2%	1%	1%	0%	0%	0%

Intensities in 270° c-plane

0°	5°	10°	15°	20°	25°	30°	35°	40°	45°	50°	55°	60°	65°	70°	75°	80°	85°	90°	95°
348	344	328	302	266	222	176	134	100	74	56	43	33	22	13	6	2	1	0	0
100%	99%	94%	87%	76%	64%	51%	38%	29%	21%	16%	12%	9%	6%	4%	2%	1%	0%	0%	0%

Beam angle 50%	Field angle 10%	Cutoff angle 2,5%	Intensity ratio in 120° cone	Intensity ratio in 90° cone
69.6°	123.9°	151.2°	91.1%	71.3%

THIS PAGE INTENTIONALLY LEFT BLANK