

Light efficiency:



Light quality:



Color temperature:



Output: 284 lm

Peak: 177 cd

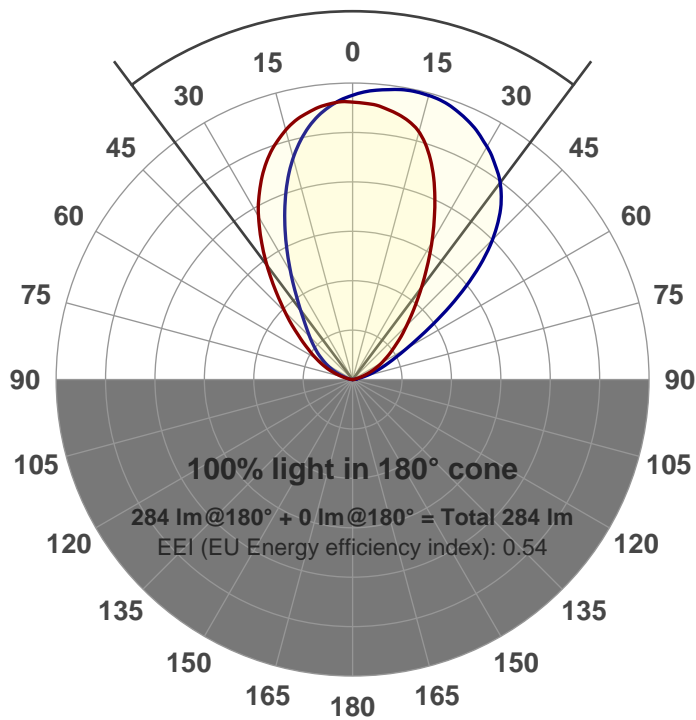
Power: 12.1 W

PF: 0.96



Beam angle

73.7°



Test number:

GRWW-X-RD-350

Luminaire Model:

GRWW-X-RD-350

Date and time:

4/25/2018 7:40:16 PM

Description:

XTM9

350mA

LUM: 284

PPF: 5.19

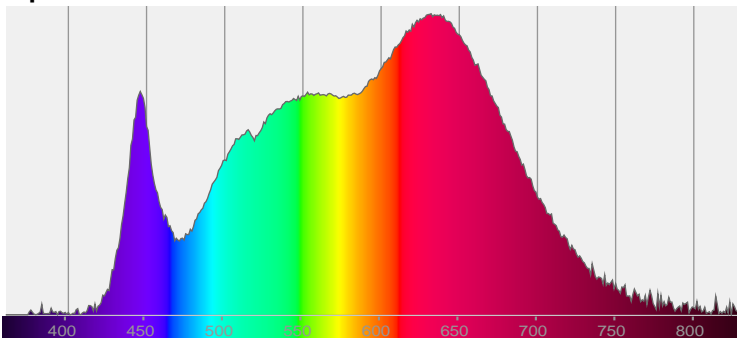


CIE 1931

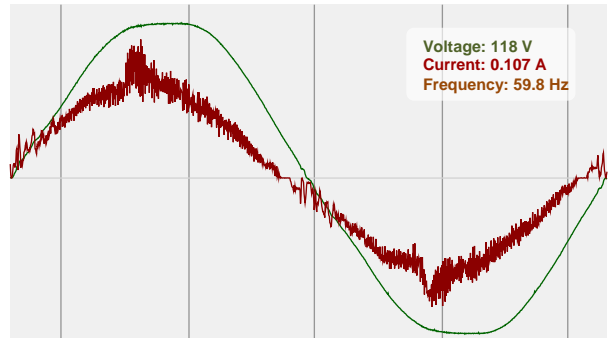
x: 0.404

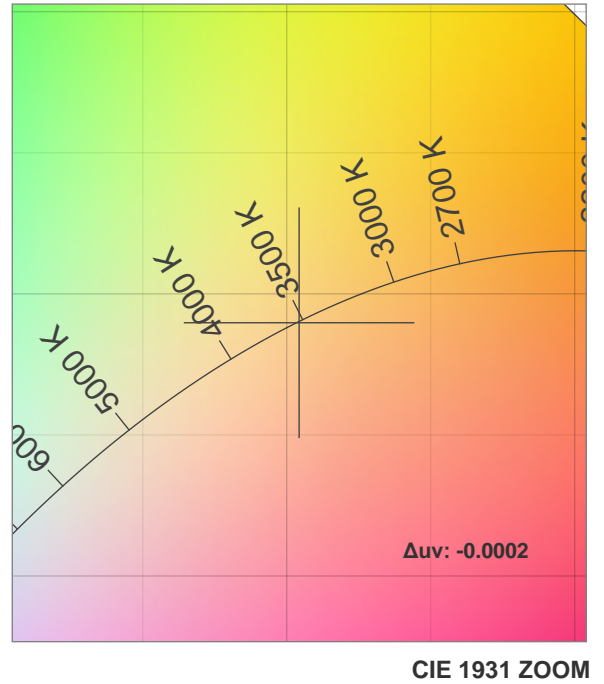
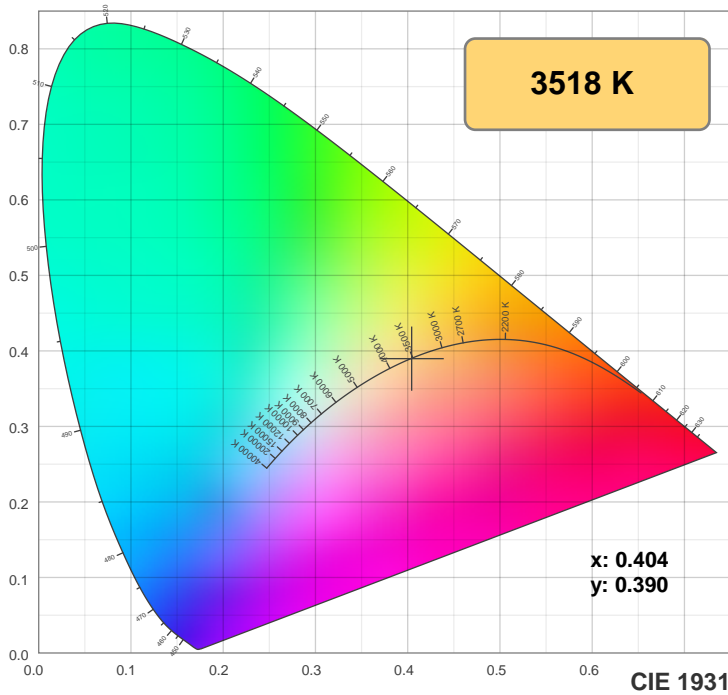
y: 0.390

Spectra

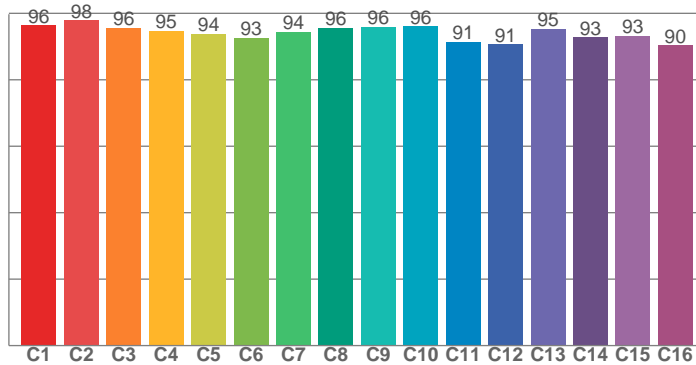


Power

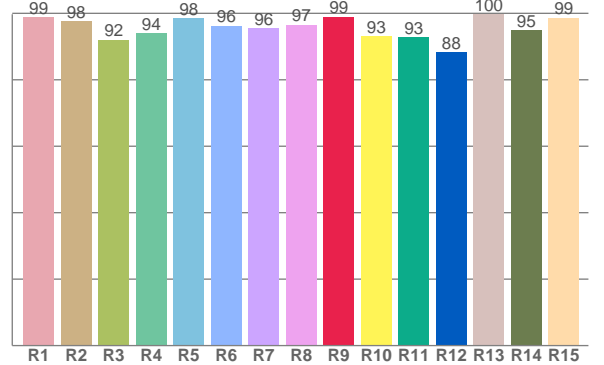




TM30: 94.3



CRI: 96.2 (R1-R8)



CRI R values, only R1-R8 are used to calculate final CRI value

R1	R2	R3	R4	R5	R6	R7	R8	R9	R10	R11	R12	R13	R14	R15
98.8	97.7	92.1	94.1	98.4	96.3	95.5	96.5	98.9	93.2	92.9	88.3	99.7	94.9	98.7

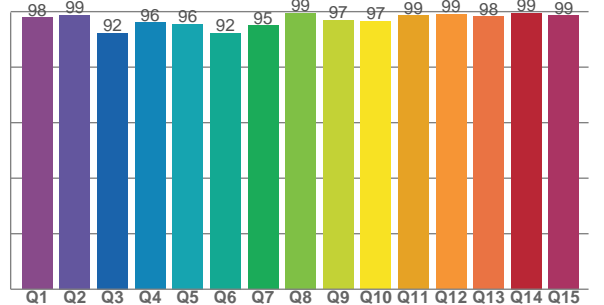
TM30 C values, 16 binned values out of total of 99 C values

C1	C2	C3	C4	C5	C6	C7	C8	C9	C10	C11	C12	C13	C14	C15	C16
96.4	97.9	95.6	94.7	93.9	92.6	94.5	95.6	96.0	96.1	91.5	90.7	95.3	92.7	93.3	90.3

CQS Q values

Q1	Q2	Q3	Q4	Q5	Q6	Q7	Q8	Q9	Q10	Q11	Q12	Q13	Q14	Q15
97.8	98.8	92.3	96.1	95.5	92.3	94.9	99.4	96.9	96.5	98.5	99.1	98.3	99.5	98.6

CQS: 96.2



Color parameters

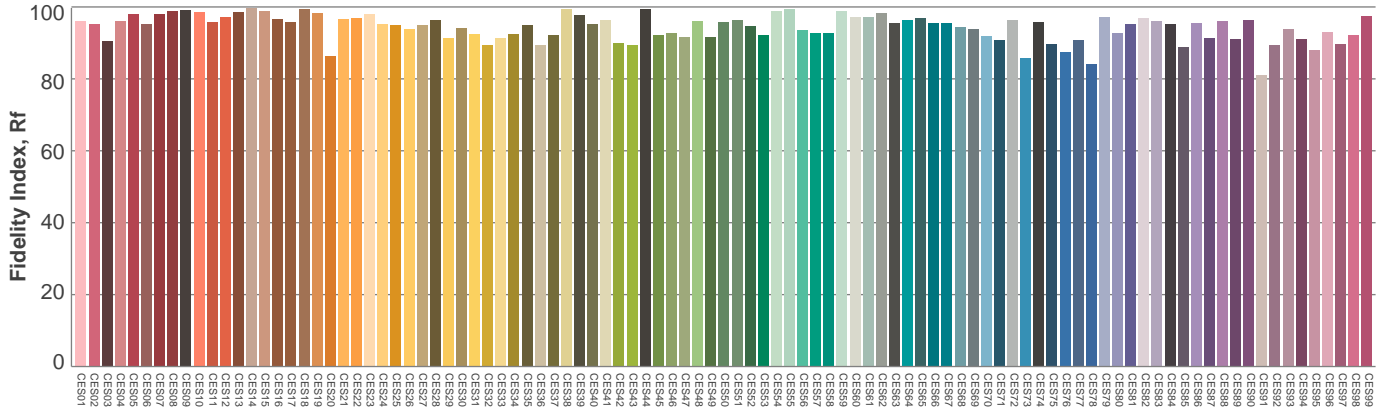
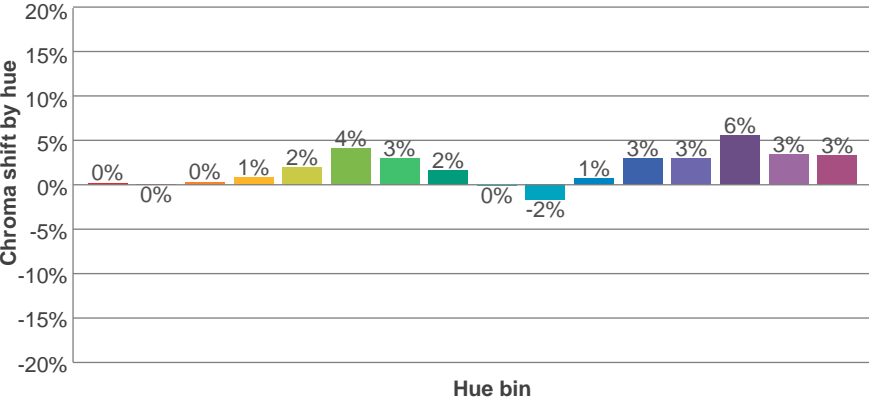
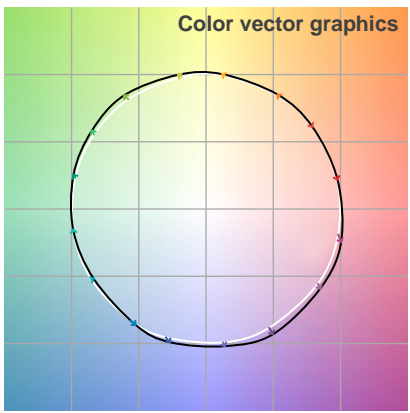
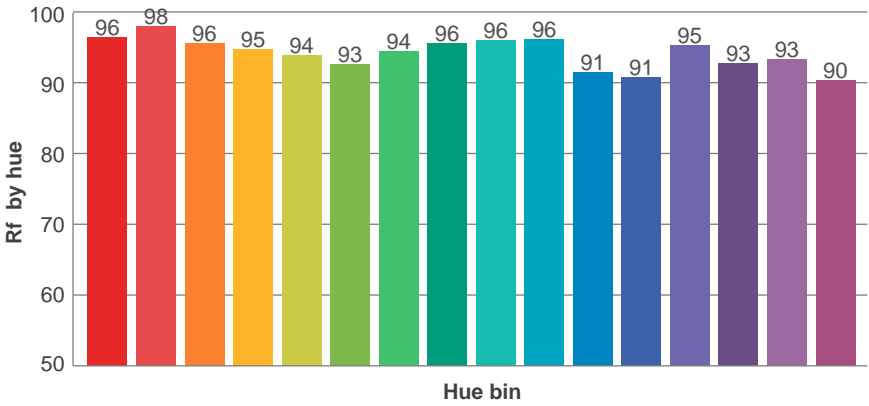
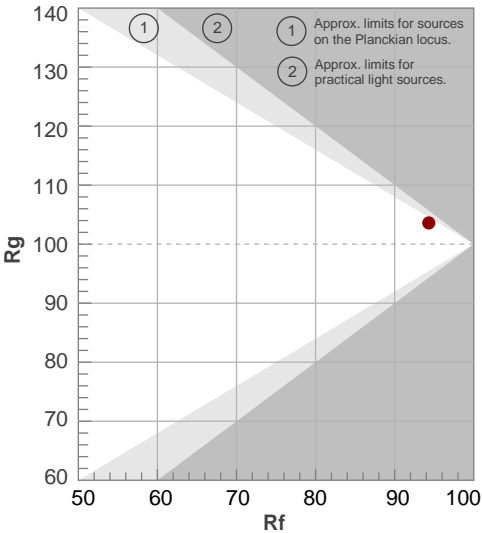
Color temperature	Color rendering index	Red component	Color fidelity	Color gamut	Color quality scale	Color coordinate cie 1931	Color coordinate cie 1931	Color coordinate	Color coordinate	Color deviation from black body
CCT	CRI	CRI R9	TM30 Rf	TM30 Rg	CQS	x	y	u	v	Δuv
3518 K	96.2	98.9	94.3	103.6	96.2	0.404	0.390	0.235	0.340	-0.0002

TM30 details

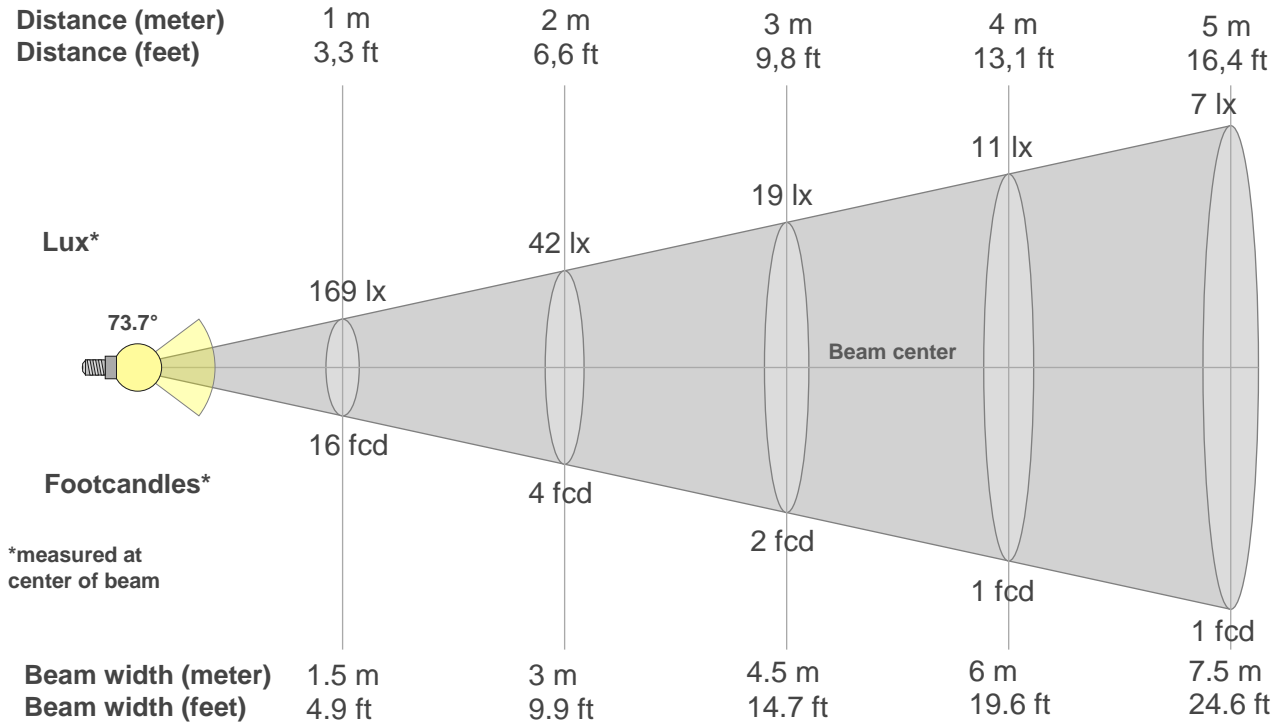
Rf 94.3
Fidelity index Rf

Rg 103.6
Gammut index Rg

Hue Bin	R _f	Graphic shifts (%)	
		Chroma	Hue
1	96	0%	-2%
2	98	0%	0%
3	96	0%	2%
4	95	1%	2%
5	94	2%	2%
6	93	4%	1%
7	94	3%	-1%
8	96	2%	-2%
9	96	0%	-1%
10	96	-2%	0%
11	91	1%	5%
12	91	3%	4%
13	95	3%	1%
14	93	6%	0%
15	93	3%	-2%
16	90	3%	-5%



Beam details



Beam intensities from 1-20m

1m	2m	3m	4m	5m	6m	7m	8m	9m	10m	11m	12m	13m	14m	15m	16m	17m	18m	19m	20m
3.3ft	6.6ft	9.8ft	13.1ft	16.4ft	19.7ft	23ft	26.2ft	29.5ft	32.8ft	36.1ft	39.4ft	42.7ft	45.9ft	49.2ft	52.5ft	55.8ft	59.1ft	62.3ft	65.6ft
169lx	42lx	19lx	11lx	7lx	5lx	3lx	3lx	2lx	2lx	1lx	1lx	1lx	1lx	1lx	1lx	1lx	1lx	0lx	0lx
15.7fcd	3.9fcd	1.7fcd	1fcd	0.6fcd	0.4fcd	0.3fcd	0.2fcd	0.2fcd	0.2fcd	0.1fcd	0.1fcd	0.1fcd	0.1fcd	0.1fcd	0.1fcd	0.1fcd	0fcd	0fcd	0fcd

Intensities in 0° c-plane

0°	5°	10°	15°	20°	25°	30°	35°	40°	45°	50°	55°	60°	65°	70°	75°	80°	85°	90°	95°
169	166	162	155	144	130	113	93	74	57	44	33	25	18	12	6	2	1	0	0
100%	98%	96%	92%	86%	77%	67%	55%	44%	34%	26%	20%	15%	11%	7%	4%	1%	1%	0%	0%

Intensities in 90° c-plane

0°	5°	10°	15°	20°	25°	30°	35°	40°	45°	50°	55°	60°	65°	70°	75°	80°	85°	90°	95°
169	164	153	138	118	95	74	57	45	36	30	24	18	12	7	4	2	1	0	0
100%	97%	91%	82%	70%	57%	44%	34%	27%	22%	18%	14%	11%	7%	4%	2%	1%	1%	0%	0%

Intensities in 180° c-plane

0°	5°	10°	15°	20°	25°	30°	35°	40°	45°	50°	55°	60°	65°	70°	75°	80°	85°	90°	95°
169	165	161	154	138	117	95	75	59	46	36	27	20	14	8	4	1	0	0	0
100%	98%	96%	91%	82%	69%	56%	45%	35%	27%	21%	16%	12%	8%	5%	2%	1%	0%	0%	0%

Intensities in 270° c-plane

0°	5°	10°	15°	20°	25°	30°	35°	40°	45°	50°	55°	60°	65°	70°	75°	80°	85°	90°	95°
169	174	177	176	174	169	161	152	139	119	92	61	38	24	15	8	3	0	0	0
100%	103%	105%	105%	103%	100%	96%	90%	82%	70%	54%	36%	23%	14%	9%	5%	2%	0%	0%	0%

Beam angle 50%	Field angle 10%	Cutoff angle 2,5%	Intensity ratio in 120° cone	Intensity ratio in 90° cone
73.7°	128.8°	151.8°	91.4%	71.7%

THIS PAGE INTENTIONALLY LEFT BLANK