

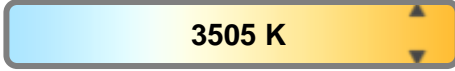
Light efficiency:



Light quality:



Color temperature:



Output: 524 lm

Peak: 326 cd

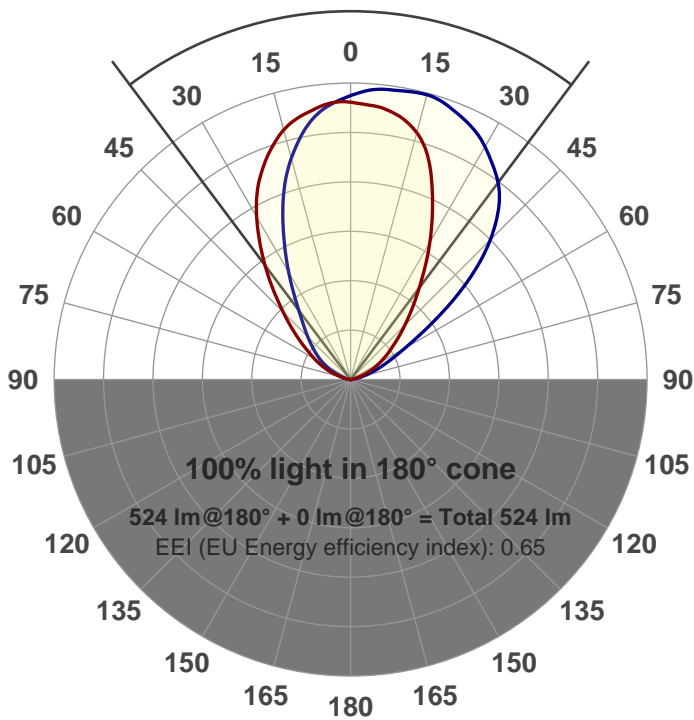
Power: 22.9 W

PF: 0.98



Beam angle

73.7°



Test number:

GRWW-X-RD-700

Luminaire Model:

GRWW-X-RD-700

Date and time:

4/25/2018 7:48:39 PM

Description:

XTM9

700mA

LUM: 524

PPF: 9.60

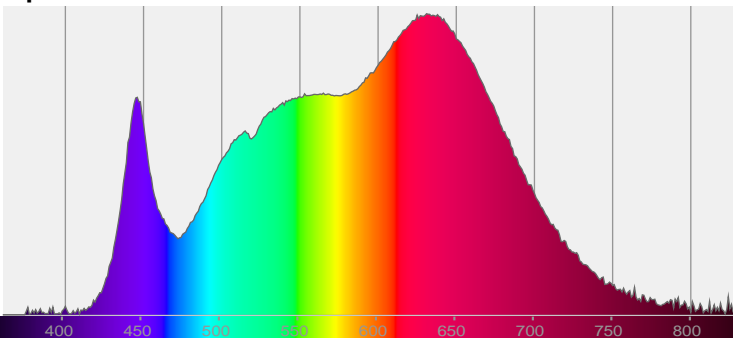


CIE 1931

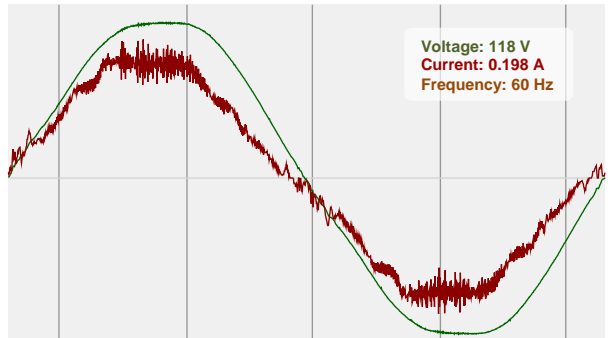
x: 0.404

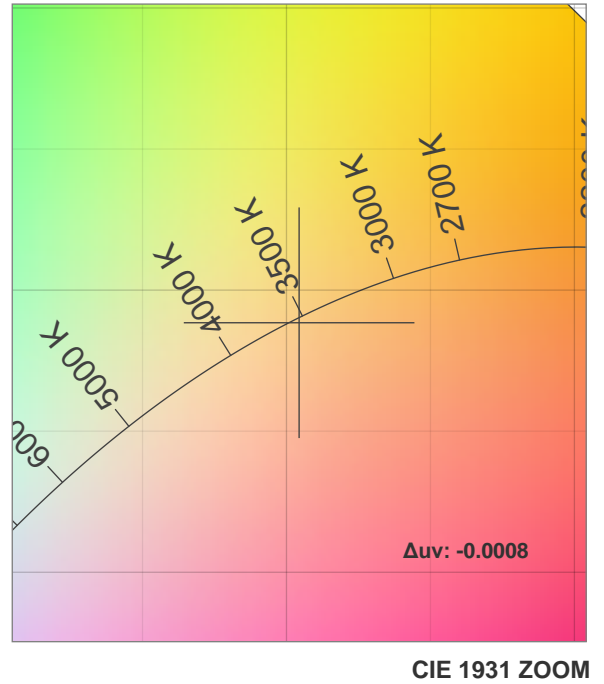
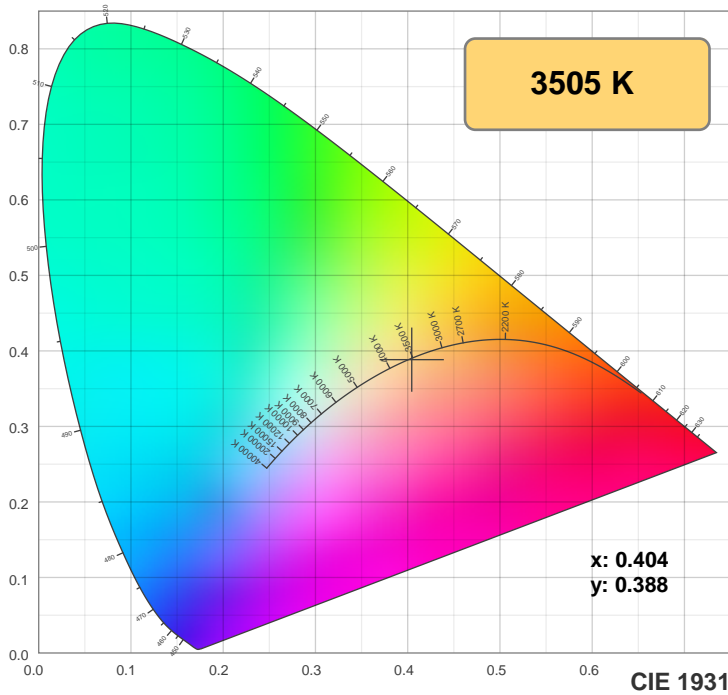
y: 0.388

Spectra

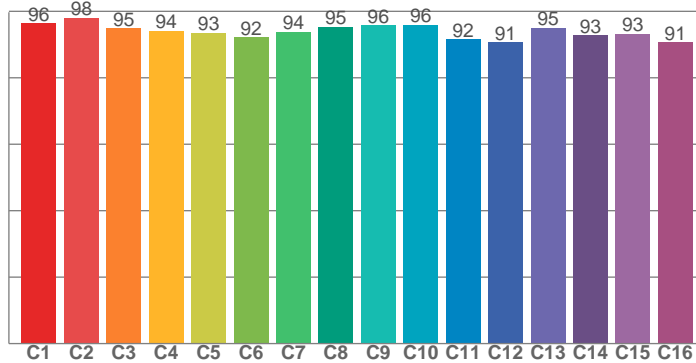


Power

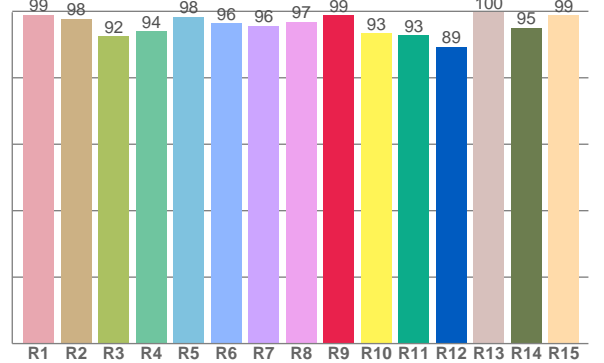




TM30: 94.1



CRI: 96.3 (R1-R8)



CRI R values, only R1-R8 are used to calculate final CRI value

R1	R2	R3	R4	R5	R6	R7	R8	R9	R10	R11	R12	R13	R14	R15
98.9	97.8	92.4	94.0	98.4	96.5	95.6	96.9	98.9	93.4	92.8	89.3	99.8	95.0	98.8

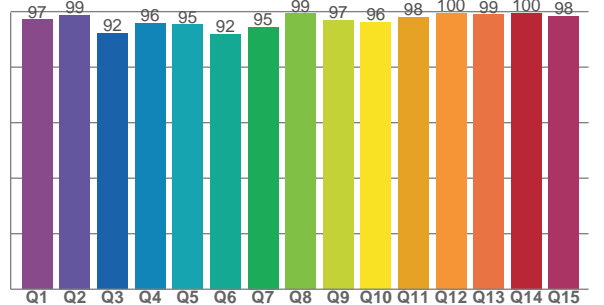
TM30 C values, 16 binned values out of total of 99 C values

C1	C2	C3	C4	C5	C6	C7	C8	C9	C10	C11	C12	C13	C14	C15	C16
96.3	98.0	94.9	94.1	93.5	92.1	93.8	95.3	95.8	96.0	91.6	90.7	95.0	92.7	93.3	90.6

CQS Q values

Q1	Q2	Q3	Q4	Q5	Q6	Q7	Q8	Q9	Q10	Q11	Q12	Q13	Q14	Q15
97.2	98.7	92.2	96.0	95.4	92.0	94.5	99.2	96.9	96.2	98.1	99.6	98.9	99.5	98.3

CQS: 96.0



Color parameters

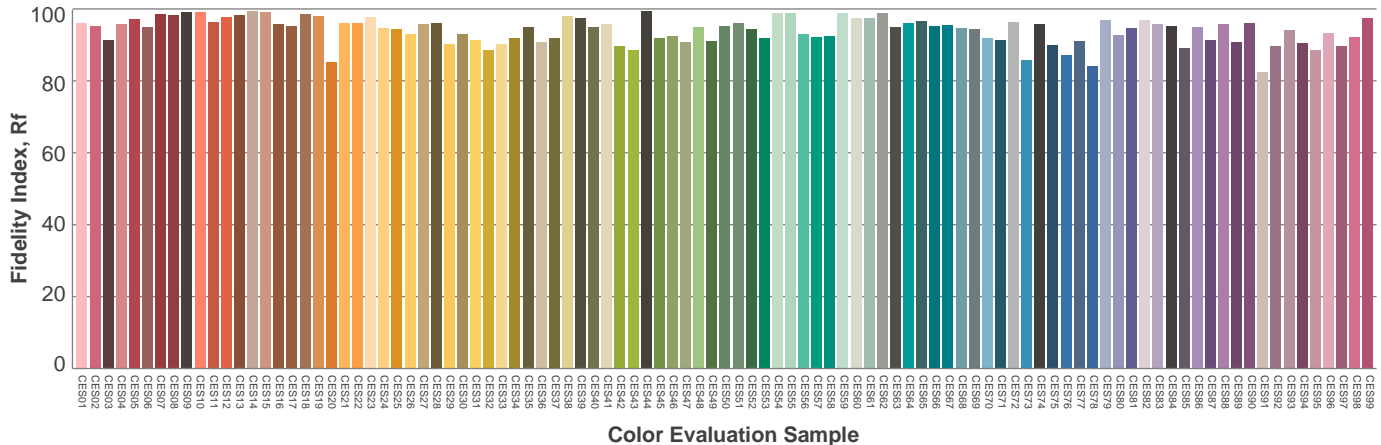
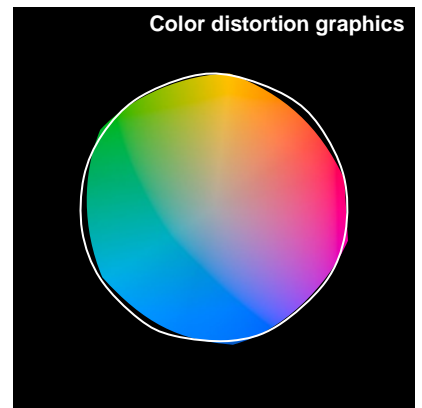
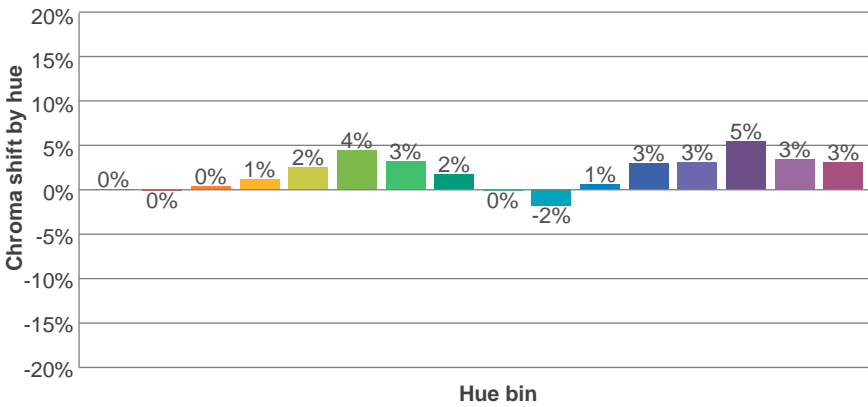
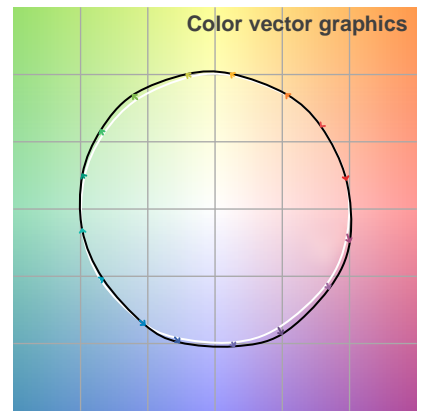
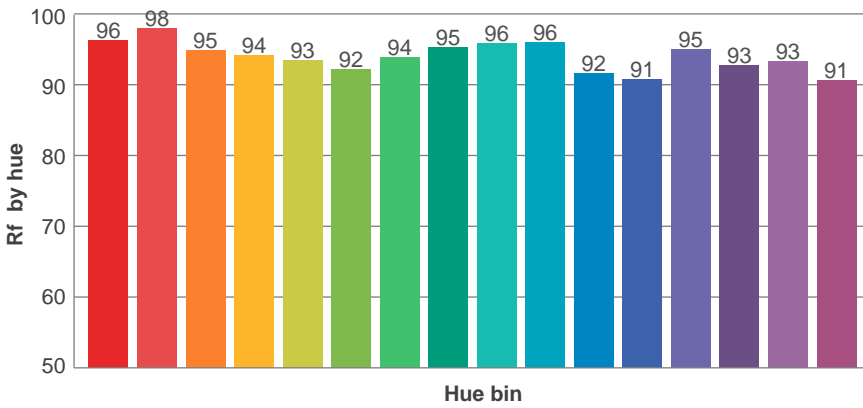
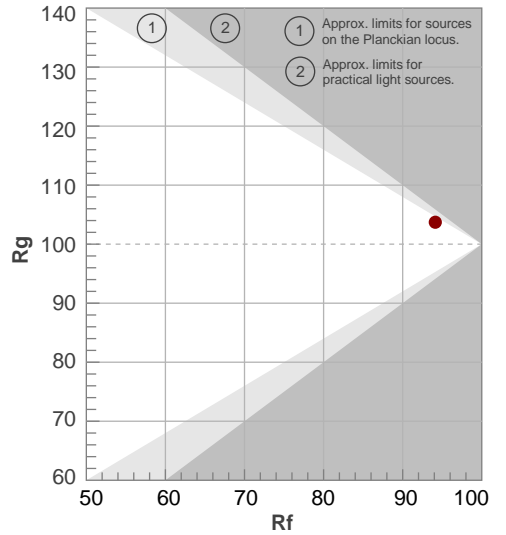
Color temperature	Color rendering index	Red component	Color fidelity	Color gamut	Color quality scale	Color coordinate cie 1931	Color coordinate cie 1931	Color coordinate	Color coordinate	Color deviation from black body
CCT	CRI	CRI R9	TM30 Rf	TM30 Rg	CQS	x	y	u	v	Δuv
3505 K	96.3	98.9	94.1	103.7	96.0	0.404	0.388	0.236	0.340	-0.0008

TM30 details

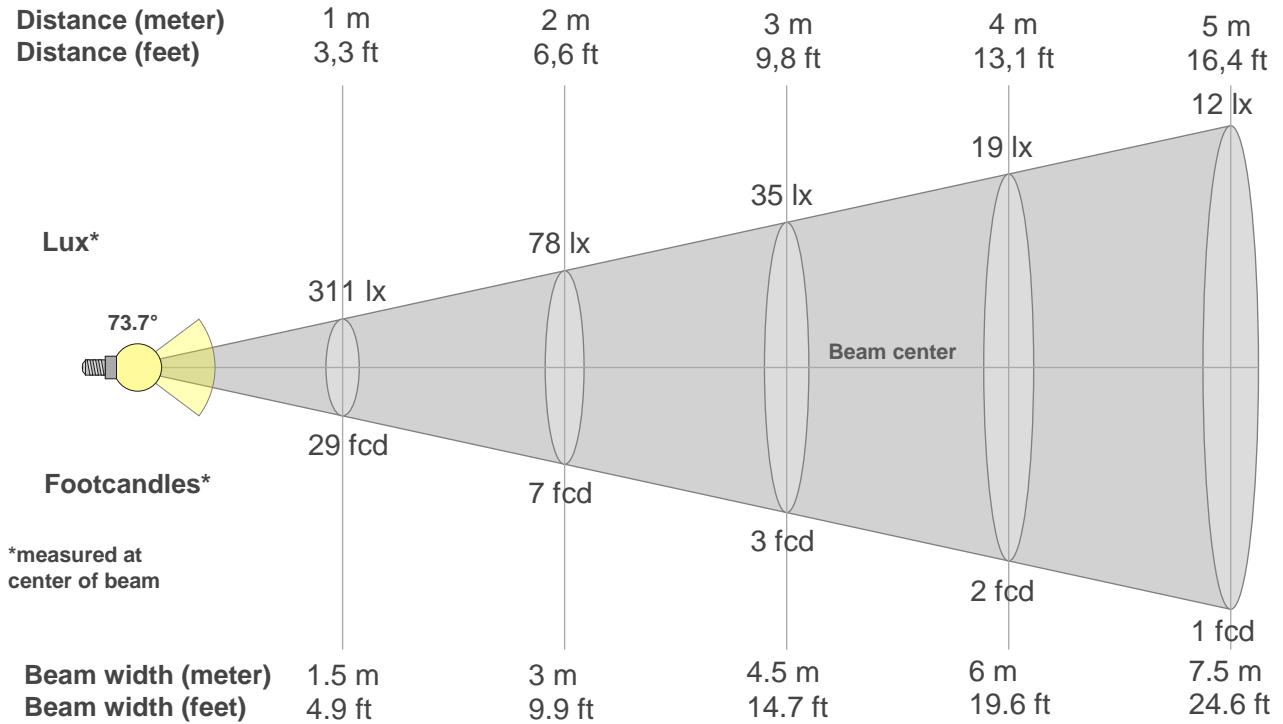
Rf 94.1
Fidelity index Rf

Rg 103.7
Gammut index Rg

Hue Bin	R _f	Graphic shifts (%)	
		Chroma	Hue
1	96	0%	-2%
2	98	0%	0%
3	95	0%	2%
4	94	1%	3%
5	93	2%	3%
6	92	4%	1%
7	94	3%	-2%
8	95	2%	-2%
9	96	0%	-2%
10	96	-2%	0%
11	92	1%	5%
12	91	3%	4%
13	95	3%	1%
14	93	5%	0%
15	93	3%	-2%
16	91	3%	-5%



Beam details



Beam intensities from 1-20m

1m	2m	3m	4m	5m	6m	7m	8m	9m	10m	11m	12m	13m	14m	15m	16m	17m	18m	19m	20m
3.3ft	6.6ft	9.8ft	13.1ft	16.4ft	19.7ft	23ft	26.2ft	29.5ft	32.8ft	36.1ft	39.4ft	42.7ft	45.9ft	49.2ft	52.5ft	55.8ft	59.1ft	62.3ft	65.6ft
311lx	78lx	35lx	19lx	12lx	9lx	6lx	5lx	4lx	3lx	3lx	2lx	2lx	2lx	1lx	1lx	1lx	1lx	1lx	1lx
28.9fcd	7.2fcd	3.2fcd	1.8fcd	1.2fcd	0.8fcd	0.6fcd	0.5fcd	0.4fcd	0.3fcd	0.2fcd	0.2fcd	0.2fcd	0.2fcd	0.1fcd	0.1fcd	0.1fcd	0.1fcd	0.1fcd	0.1fcd

Intensities in 0° c-plane

0°	5°	10°	15°	20°	25°	30°	35°	40°	45°	50°	55°	60°	65°	70°	75°	80°	85°	90°	95°
311	306	298	286	266	241	208	171	136	106	81	61	47	34	22	12	5	2	0	0
100%	98%	96%	92%	86%	77%	67%	55%	44%	34%	26%	20%	15%	11%	7%	4%	2%	1%	0%	0%

Intensities in 90° c-plane

0°	5°	10°	15°	20°	25°	30°	35°	40°	45°	50°	55°	60°	65°	70°	75°	80°	85°	90°	95°
311	303	283	254	217	175	137	105	83	67	55	44	33	23	13	7	5	3	0	0
100%	97%	91%	82%	70%	56%	44%	34%	27%	22%	18%	14%	11%	7%	4%	2%	2%	1%	0%	0%

Intensities in 180° c-plane

0°	5°	10°	15°	20°	25°	30°	35°	40°	45°	50°	55°	60°	65°	70°	75°	80°	85°	90°	95°
311	304	297	283	255	215	176	139	109	85	66	51	38	26	15	6	3	1	0	0
100%	98%	96%	91%	82%	69%	57%	45%	35%	27%	21%	16%	12%	8%	5%	2%	1%	0%	0%	0%

Intensities in 270° c-plane

0°	5°	10°	15°	20°	25°	30°	35°	40°	45°	50°	55°	60°	65°	70°	75°	80°	85°	90°	95°
311	322	325	326	321	311	298	280	256	219	169	113	70	45	28	15	5	1	0	0
100%	104%	105%	105%	103%	100%	96%	90%	82%	70%	54%	36%	22%	14%	9%	5%	2%	0%	0%	0%

Beam angle 50%	Field angle 10%	Cutoff angle 2,5%	Intensity ratio in 120° cone	Intensity ratio in 90° cone
73.7°	128.8°	151.8°	91.4%	71.7%

THIS PAGE INTENTIONALLY LEFT BLANK