



GR-F Series

GRAFFITI

is the innovative line of
LED lighting solutions from
Specialty Lighting Industries.



GRF

Series in low to medium ceiling heights typically found in residential, commercial or retail applications. GRF series fixtures feature a flat trim surface that blends seamlessly with the ceiling construction. The Graffiti™ fixtures provide cost effective LED lighting solutions. As the creative spirit of its name implies, Graffiti™ systems provide all the quality SLI has grown famous for over the last 25 years, but at reduced lead times, affordable price points and innovative technologies that will liberate your creative flair.

THERMAL MANAGEMENT: Proprietary high performance aluminum black heatsink for maximum LED life

Project Name:

Specifier:

Distributor:

Quantity:

Type:

Signature:

ADJUSTABLE/FIXED SPECIFICATIONS

MOUNTING - Recessed in architectural ceiling. Butterfly brackets and Hanger bars included with housing and mounting pans.

- **RM**- Open fixture for retrofit for remodel in existing ceilings
- **IC**-Housing for new construction where insulation comes in contact with fixture
- **NIC**-Housing for new construction where IC not required
- **NP**- For New construction
- **DP**- Pan for dropped ceilings
- **BP**- Pan for metal studs
- **CP**- Chicago Plenum

HOUSING - C1/C2 Fixed housing is smaller size than Lutron/EldoLED Fixed housing (see page 3 for details)*.

TRIM - One piece die cast aluminum, flanged or flangeless trim with flat pinhole aperture. Available for wet locations. Accommodates up to 1" ceiling thickness as standard.

- **ZT/ZST**- for use in plaster/GWB ceilings
- **FT/FST**- for use in architectural ceilings

ELECTRICAL

- **Standard 0-10v (C1)** Dimming down to 1%
 - **TRIAC/ELV (C2)** Dimming down to 1%
 - **EldoLED 0-10v (E1)** Logarithmic Dimming down to 0.1%
 - **EldoLED Dali (E2)** Dimming down to 0.1%
 - **EldoLED 0-10v (E3)** Linear Dimming down to 0.1%
 - **Lutron Hi-lume (L2)** Hi-lume 1% (former A-Series) 2-wire Driver
 - **Lutron Hi-lume EcoSystem 1% (LTB)** Hi-lume 1% with Fade-to-Black (former H-Series) digital EcoSystem Driver
 - **Lutron Hi-lume Premier 0.1% (LTP)** Hi-lume Premier 0.1% with Fade-to-Black digital EcoSystem
 - **EM Pack** Dimming driver with emergency battery backup
- All drivers are field replaceable*

Specifier/Installer is responsible for testing & validating compatibility of any control equipment used. Additional conductors may be required depending on dimming system.

LED



- **CZ- Citizen** 2700 / 3000 / 3500K / 4000K, 90+CRI , 50+R9
- **AD- Ambient Dim™** 3000 to 1900K / 3000 to 2200K / 2700 to 2200K, 97 CRI
- **XT- Xicato** Available on request

LENS/OPTICS - Interchangeable reflector provides multiple beam patterns. Field-changeable optics

- **Spot (15°) • Narrow (24°) • Flood (38°) • Wide Flood (60°)**
- Optional lenses available for aperture include Solite and Veiling Acrylic. Accepts two optical accessories and an optional trim mounted lens.

FINISH - Black powder paint housing. Aperture trim available in white as standard.
Can be field painted to match ceiling finish.

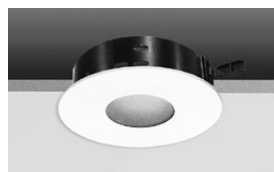
WARRANTY - 5 year limited on LED and driver. See website for details.

LABELS -  US, US tested to UL standards 1598, Dry/Damp and Wet listings. IC/Airtight,  Supports CA Title 24 part 6 compliance meeting JA8 Requirements in many combinations. Chicago Plenum Available.

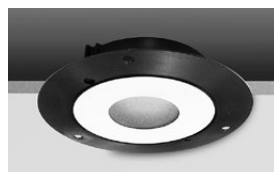
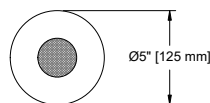
Patent Pending. These specifications subject to change without notice. 01/23 Rev.2



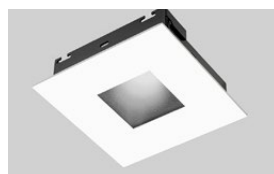
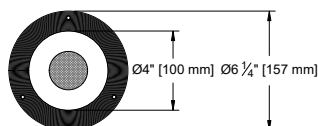
INFORMATION- TRIM



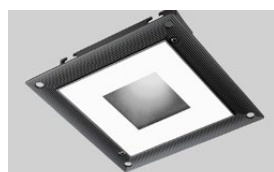
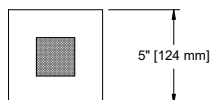
ROUND/ FLANGED



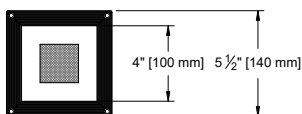
ROUND / FLANGELESS



SQUARE / FLANGED



SQUARE / FLANGELESS



PHOTOMETRICS

*Visit website for
further photometric data
or Click Here

*LED Technology rapidly changes. Please consult factory for
latest specs and photometry.

ORDER INFO

CODE

Graffiti™ Housing

GRF

Housing

RM = Retrofit
IC = IC/Airtight
NIC = Non IC
NP = New Pan
DP = Dropped Pan
BP = Bracket Pan
CP = Chicago Plenum

Source/System Watts/Delivered lm/LPW (Lumens/watt)

TITLE 24 JA8 CZ14 = Citizen 15W / 1036lm / 69LPW
TITLE 24 JA8 CZ20 = Citizen 21W 1414lm / 67LPW
TITLE 24 JA8 AD14 = Ambient Dim 15W / 653lm / 43LPW
TITLE 24 JA8 AD20 = Ambient Dim 21W / 1116lm / 53LPW (AD 3019 only)
XT = Xicato - Contact Factory

Values Based on Round,
Fixed, with Flood optic

Type

TITLE 24 JA8 F = Fixed
TITLE 24 JA8 A = Adjustable

CCT

Fixed White
TITLE 24 JA8 27 = 2700K
TITLE 24 JA8 30 = 3000K
TITLE 24 JA8 35 = 3500K
TITLE 24 JA8 40 = 4000K

Ambient Dim

TITLE 24 JA8 3019 = 3000K to 1900K
TITLE 24 JA8 3022 = 3000K to 2200K (AD14 only)
TITLE 24 JA8 2722 = 2700 to 2200K (AD14 only)

Beam

SP = Spot
NF = Narrow flood
FL = Flood
WF = Wide flood

Driver

TITLE 24 JA8 C1 = 0-10V dimming, 1%, 120-277v
TITLE 24 JA8 C2 = TRIAC/ELV 2-wire, 1% 120V only (Leading/Trailing Edge)
TITLE 24 JA8 E1 = EldoLED 0-10V Logarithmic Dim, 0.1%, 120-277v
TITLE 24 JA8 E2 = EldoLED DALI, 0.1%, 120-277v
TITLE 24 JA8 E3 = EldoLED 0-10V Linear Dim, 0.1%, 120-277v
TITLE 24 JA8 L2 = Hi-lume 1% (former A-Series) 2-wire Driver, 120v only (LTEA)
TITLE 24 JA8 LTB = Hi-lume 1% with Fade-to-Black (former H-Series) digital EcoSystem Driver, 120-277v (LDE1)
TITLE 24 JA8 LTP = Hi-lume Premier 0.1% with Fade-to-Black digital EcoSystem, 120-277v (PEQ0)
EM** = Emergency Pack

**Lutron & EldoLED require Inverter

Graffiti™ Trim

GRTF

Shape

RD = Round
SQ = Square

Trim

FT = Flanged
ZT = Flangeless
FST* = Flanged Shower
ZST* = Flangeless Shower
*Lens Required

Finish

WHT

WHT = White

Lens

79A / 91A

91A = Solite
79A = Frosted
None

* [CLICK HERE to view Accessories for Trims.](#)

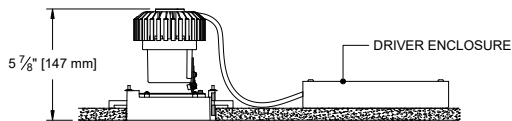
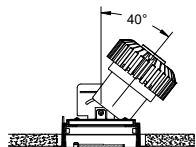
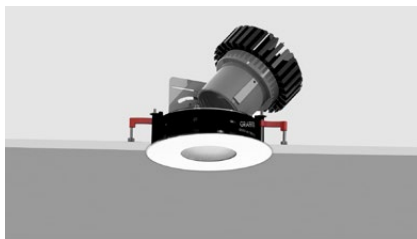
Patent Pending. These specifications subject to change without notice. 01/23 Rev. 2

INFORMATION- HOUSING

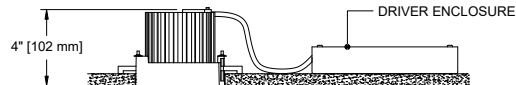
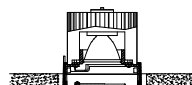
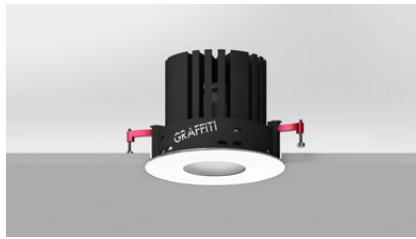
RETROFIT

For easy installation in existing ceilings.

ADJUSTABLE



FIXED

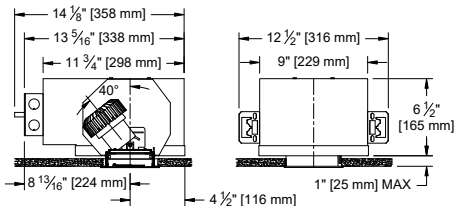
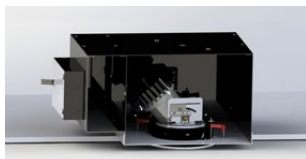


IC/NIC/CP

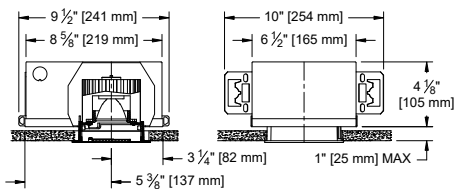
For projects requiring housings or IC rated fixtures.

1287 Hanger Bars comes standard with fixed and adjustable housing (see below for hanger bar dimensions).

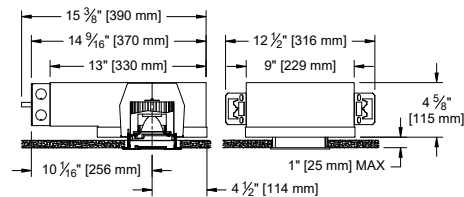
ADJUSTABLE All Drivers



FIXED C1/C2 Drivers



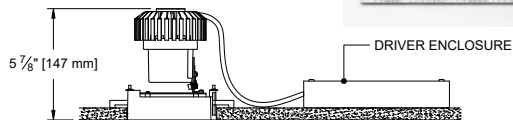
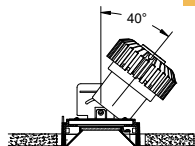
FIXED LUTRON / ELDO Drivers



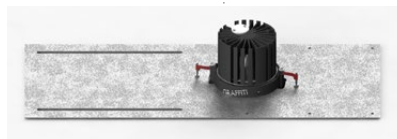
PAN

For new construction applications not requiring a housing.

ADJUSTABLE

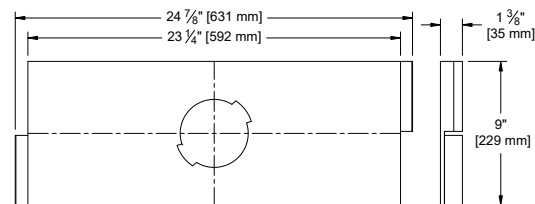
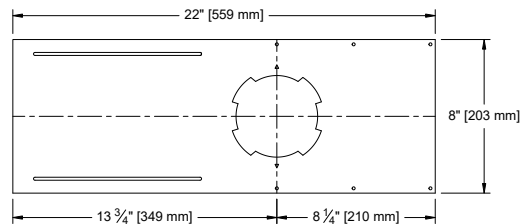


OPTION - New Pan

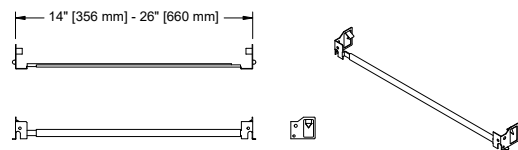


OPTION - Dropped Pan

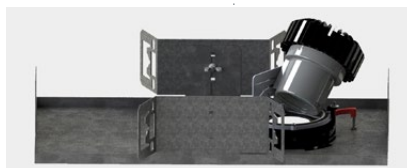
for use in Armstrong® T-Bar ceilings



1287 Hanger Bar comes standard with Bracket Pan & IC/NIC
Maximum Extension: 26"



OPTION - Bracket Pan



FIXED

